

# COMMUNITY ENGAGEMENT PUBLIC STREET PROJECT



## INTRODUCTION

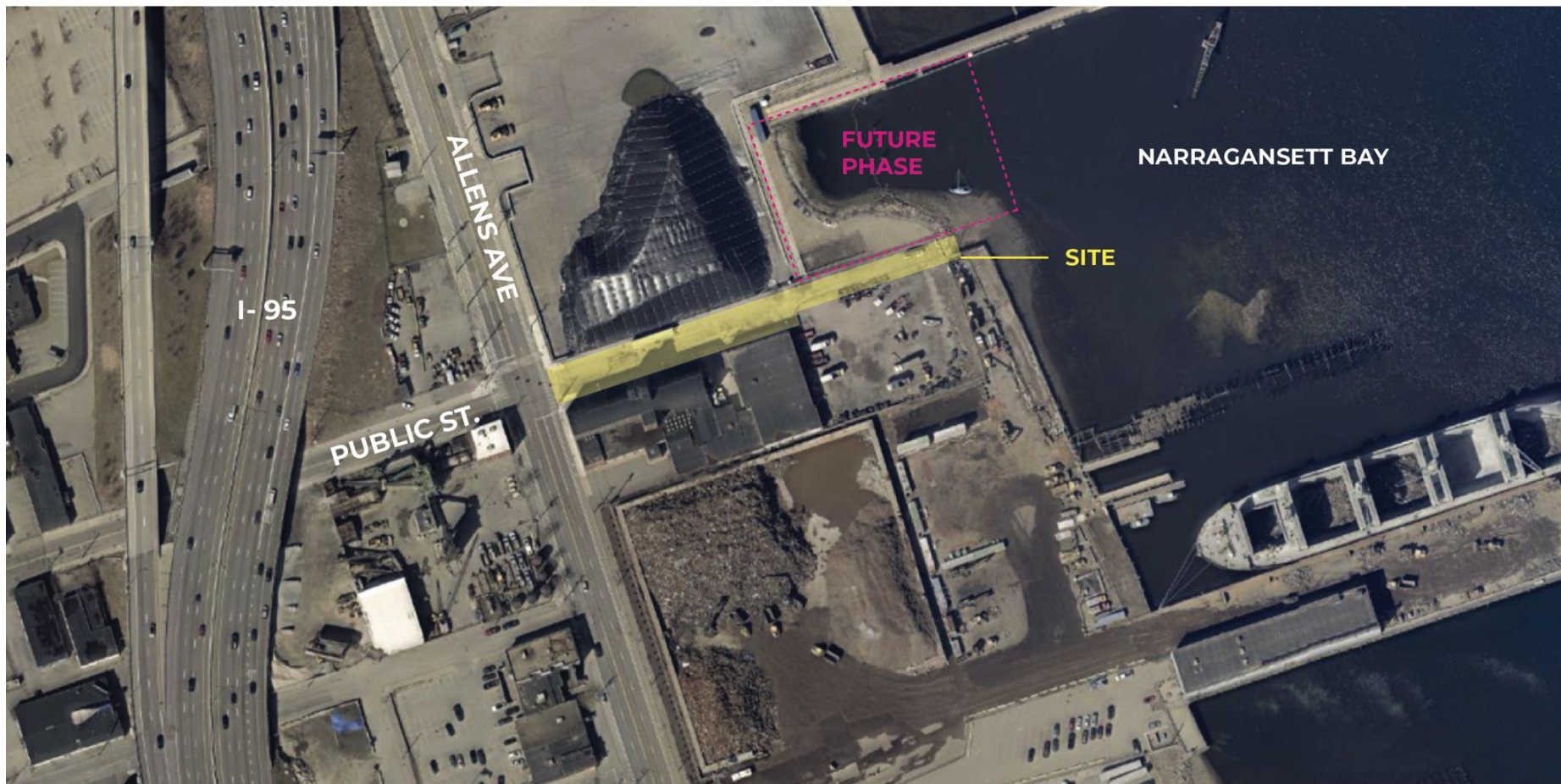
The Public Street project will transform this waterfront area to prioritize community wellness, and acknowledge climate risk and environmental conditions in alignment with the City of Providence's Climate Justice Plan.



*Looking east on Public St. towards the river, Jan 2022.*



## PUBLIC STREET - SITE LOCATION



## PUBLIC STREET - SITE

Public St. has three distinct areas :

**(A)** Wider portion of Public St. consisting of a paved asphalt street. Business located on the block requiring vehicle access and parking.



**(B)** Narrower unpaved and capped portion of the right-of-way extending into the waterfront. This is a narrow stretch extending into high tide line.



**(C)** Future Phase - Waterfront areas adjacent to Public Street lot that are visible during low tide. These areas are a sandy "beach" and habitat for shoreline wildlife.



# PRELIMINARY DESIGN CONCEPTS

***Please note, these concepts are only meant to be conversation starters for the purpose of getting public feedback.***

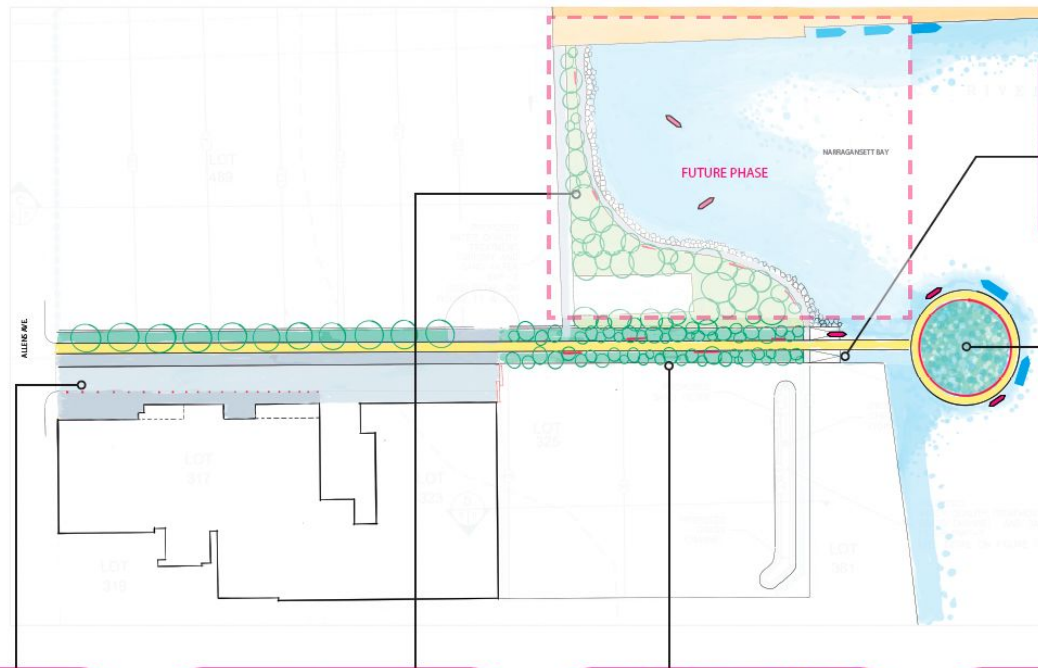






A group of people are kayaking on a calm body of water. In the foreground, a person is seen from behind, paddling a blue kayak. Further ahead, another person is also in a blue kayak. The water is surrounded by green reeds and grass. The sky is clear and blue. The image is framed with a pink border.





WE WILL EXPLORE INTERESTING WAYS TO STEP DOWN TO THE WATER'S EDGE



STRONG BUT SIMPLE LINEAR PAVING THAT "ROLLS OUT THE CARPET" DIRECTLY INTO THE WATER



PLANT A "FOREST" OF NATIVE TREES WITH A STONE DUST WALKING PATH AT THE WATER'S EDGE



A MORE HEAVILY PLANTED LINEAR WALKWAY WITH BENCHES AND WIDE ENOUGH FOR SMALL BOAT ACCESS



A UNIQUE AND ICONIC PIER THAT IS AN ATTRACTION TO THE AREA. RECREATIONAL BOATS ARE ABLE TO DOCK AND THE CENTER SERVES AS A WILDLIFE HABITAT