

**COMMUNITY WORKSHOP**

**PUBLIC STREET PROJECT**



# AGENDA

## 01 Welcome

Introduction (Project + Team Members)  
Meeting Purpose + Community Agreements  
Land Acknowledgement

## 02 Project and Site Context

Overview of Site Analysis  
Design Concepts

## 03 Community Discussion

Breakout Tables :

- What should be the priorities for the site?
- What design elements should be prioritized?
- What is missing and what are the challenges in this space?

Report Out

## 04 Debrief and Wrap Up

## CITY OF PROVIDENCE

**Elder González Trejo**

Sustainability Department

**Kevin Proft**

Sustainability Department

**Ian Cullings**

Department of Public Works

**David Everett**

Department of Planning

## COMMUNITY REPRESENTATIVE

**Monica Huertas**

Racial and Environmental Justice Committee  
The People's Port Authority

## DESIGN TEAM

**Manuel Cordero Alvarado, RA, ALEP**

CIVIC

**Valeria Portillo**

CIVIC

**Adam Anderson**

Design Under Sky

DESIGN UNDER SKY  
LANDSCAPE ARCHITECTURE

CIVIC



- *Be Present*
- *Be Generous*
- *Be Patient*
- *Be Curious*

## **Community Agreements**

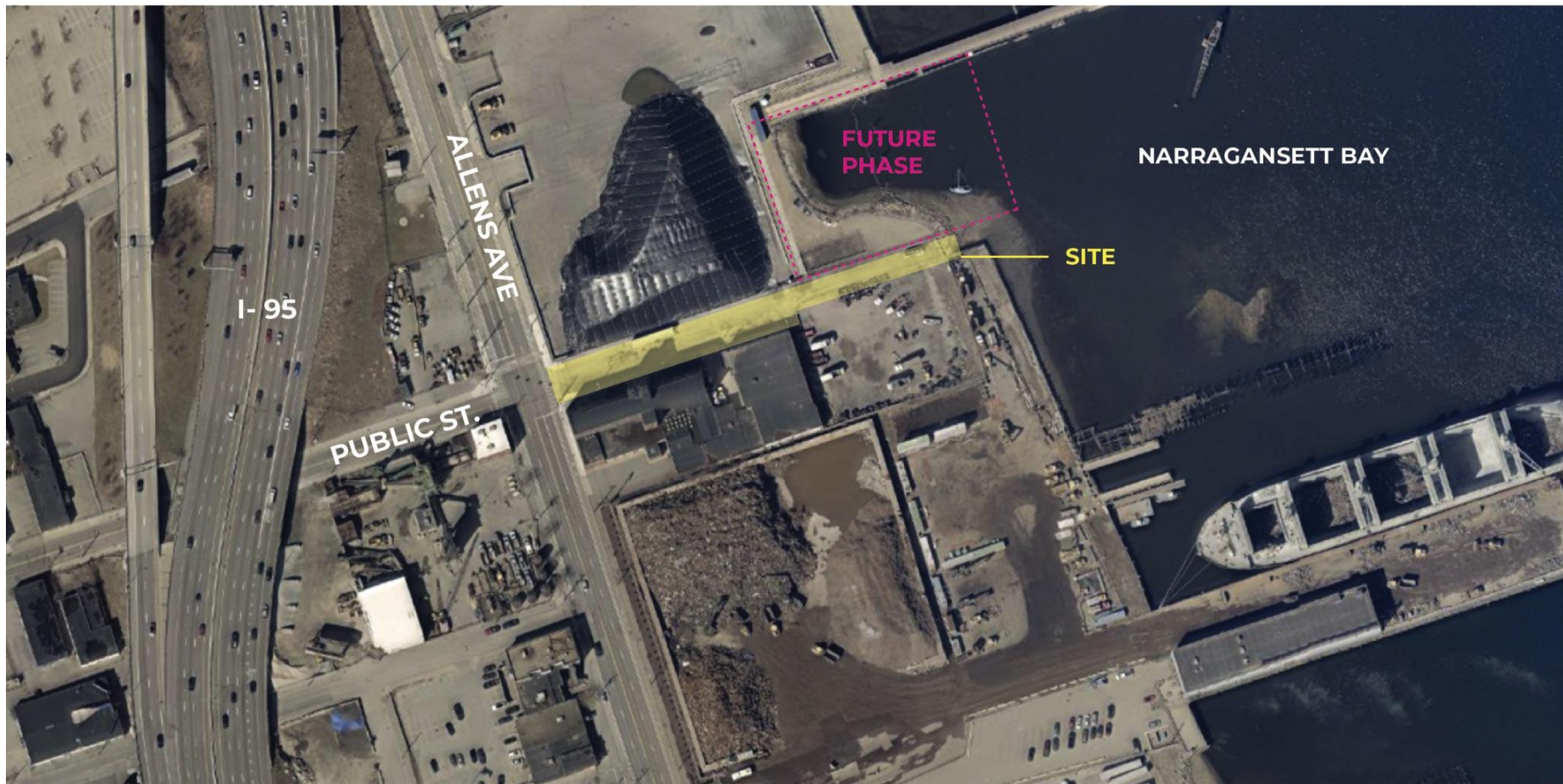
## INTRODUCTION

The Public Street project will transform this waterfront area to prioritize community wellness, and acknowledge climate risk and environmental conditions in alignment with the City of Providence's Climate Justice Plan.



*Looking east on Public St. towards the river, Jan 2022.*

# PUBLIC STREET - SITE LOCATION



## PUBLIC STREET - SITE

Public St. has three distinct areas :

**(A)** Wider portion of Public St. consisting of a paved asphalt street. Business located on the block requiring vehicle access and parking.



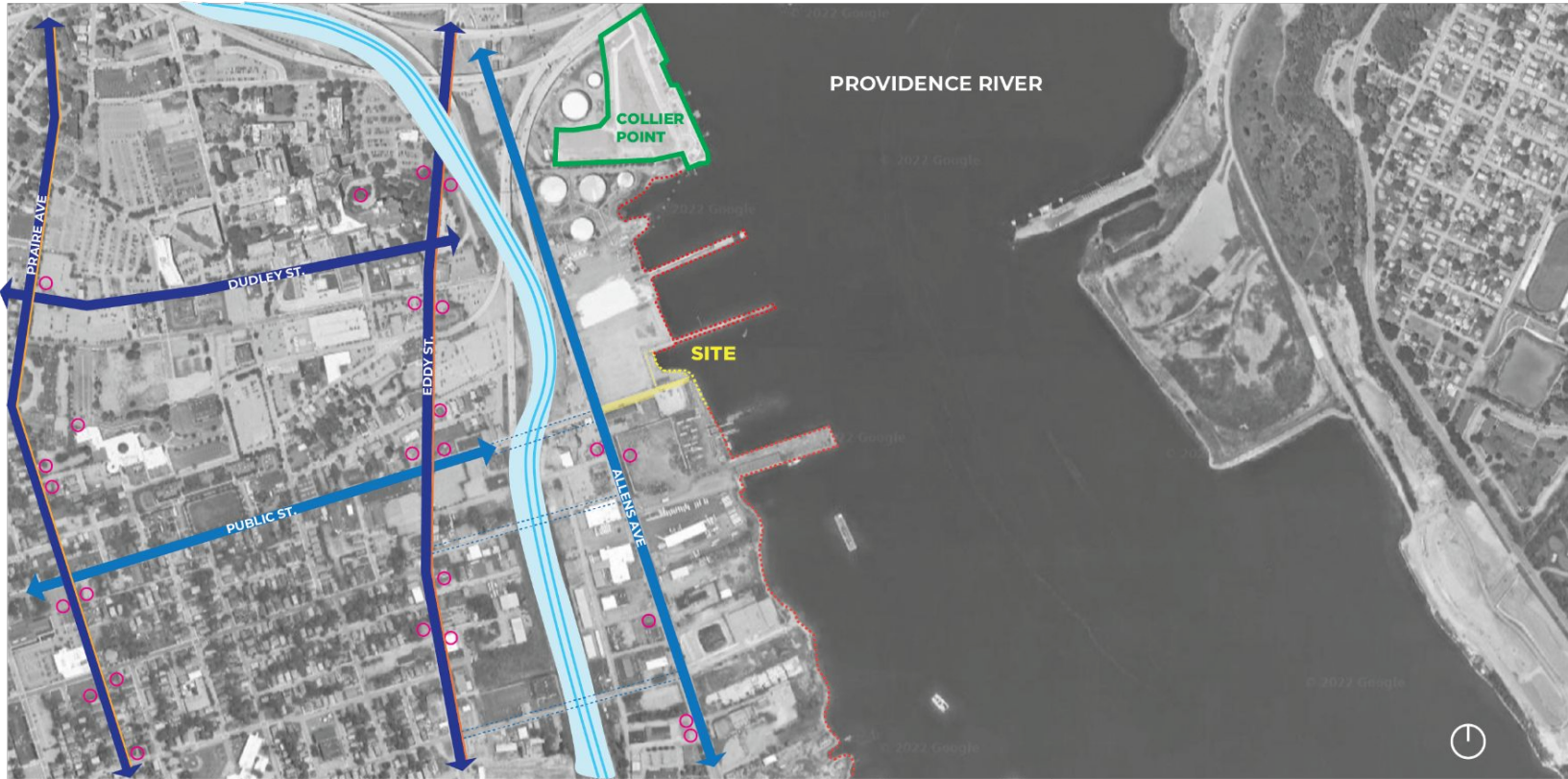
**(B)** Narrower unpaved and capped portion of the right-of-way extending into the waterfront. This is a narrow stretch extending into high tide line.



**(C)** Future Phase - Waterfront areas adjacent to Public Street lot that are visible during low tide. These areas are a sandy "beach" and habitat for shoreline wildlife.



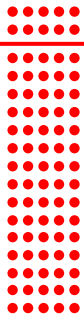
# PUBLIC STREET - ACCESS



## KEY

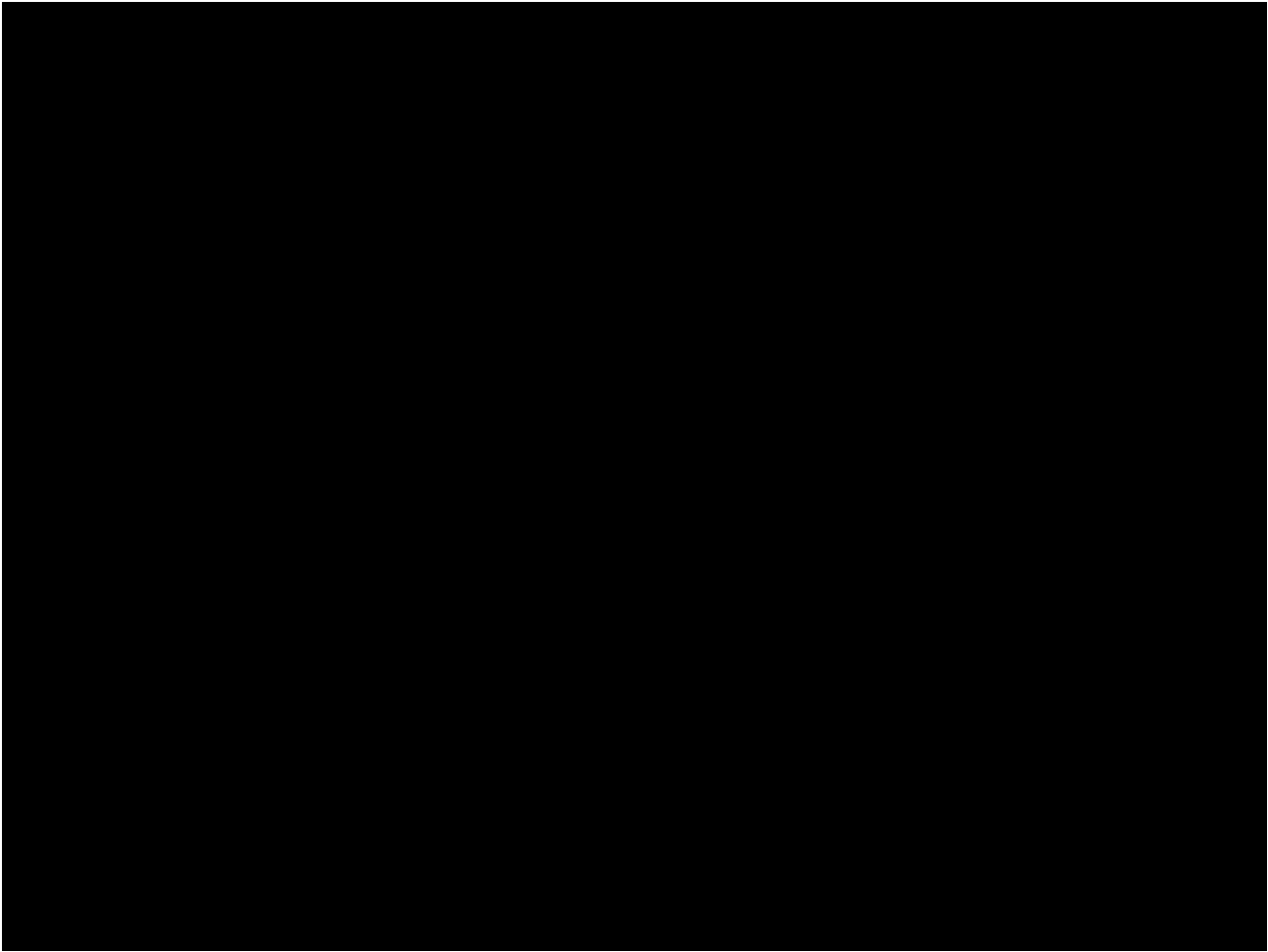
- |  |               |  |      |  |             |  |            |  |           |  |      |  |           |  |  |  |
|--|---------------|--|------|--|-------------|--|------------|--|-----------|--|------|--|-----------|--|--|--|
|  | MAJOR STREETS |  | SITE |  | GREEN SPACE |  | RESTRICTED |  | BUS STOPS |  | I-95 |  | UNDERPASS |  |  |  |
|  | MINOR STREETS |  |      |  |             |  |            |  |           |  |      |  |           |  |  |  |



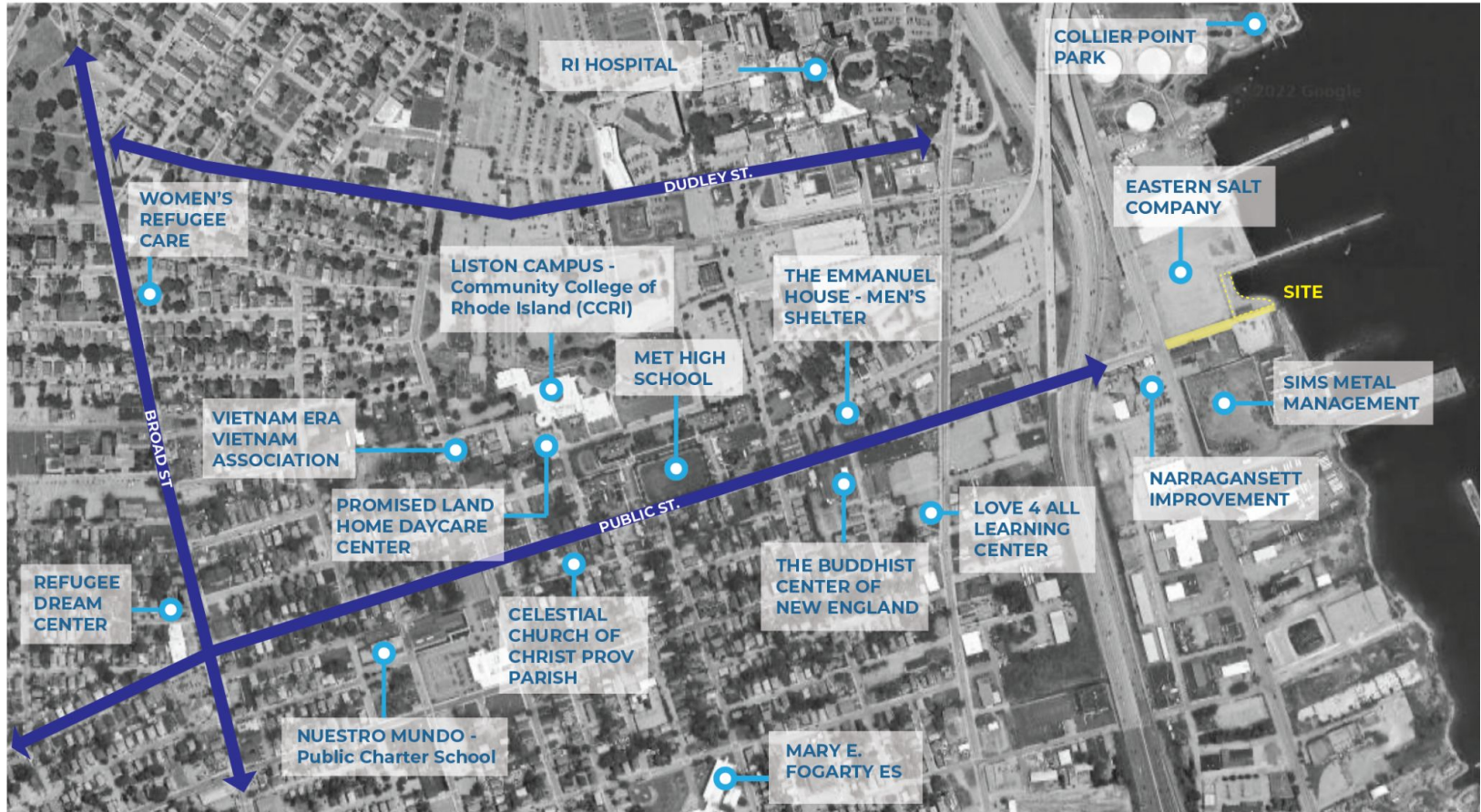


# **WALKING DOWN PUBLIC STREET**

Public Street Animation



# PUBLIC STREET - CONNECTIONS



# CULTURAL HISTORY

## State Pier 01

“New Building on the Port of Providence State Pier in 1915. Inspection rooms and immigrant headquarters are on the second floor. The front is occupied by an exceptional suite of offices. Thoroughly modern construction provides the maximum efficiency in freight and passenger handling. The sides of the building are so constructed that any section or number of segments between the piers of the frame can be hoisted and folded up in a moment, to accommodate the gangplanks hung from any portion of a steamer of any size alongside.”

*Providence Magazine, March 1915, P. 162. GGA Image ID # 131c0d3cc9*



## State Pier 01

This waterfront was an entry point for a different generation. There is a connection with the South Providence of today and how waves of immigration from different time periods have shaped the city.



# PHYSICAL HISTORY

NEIGHBORHOOD - 1819 - 2022

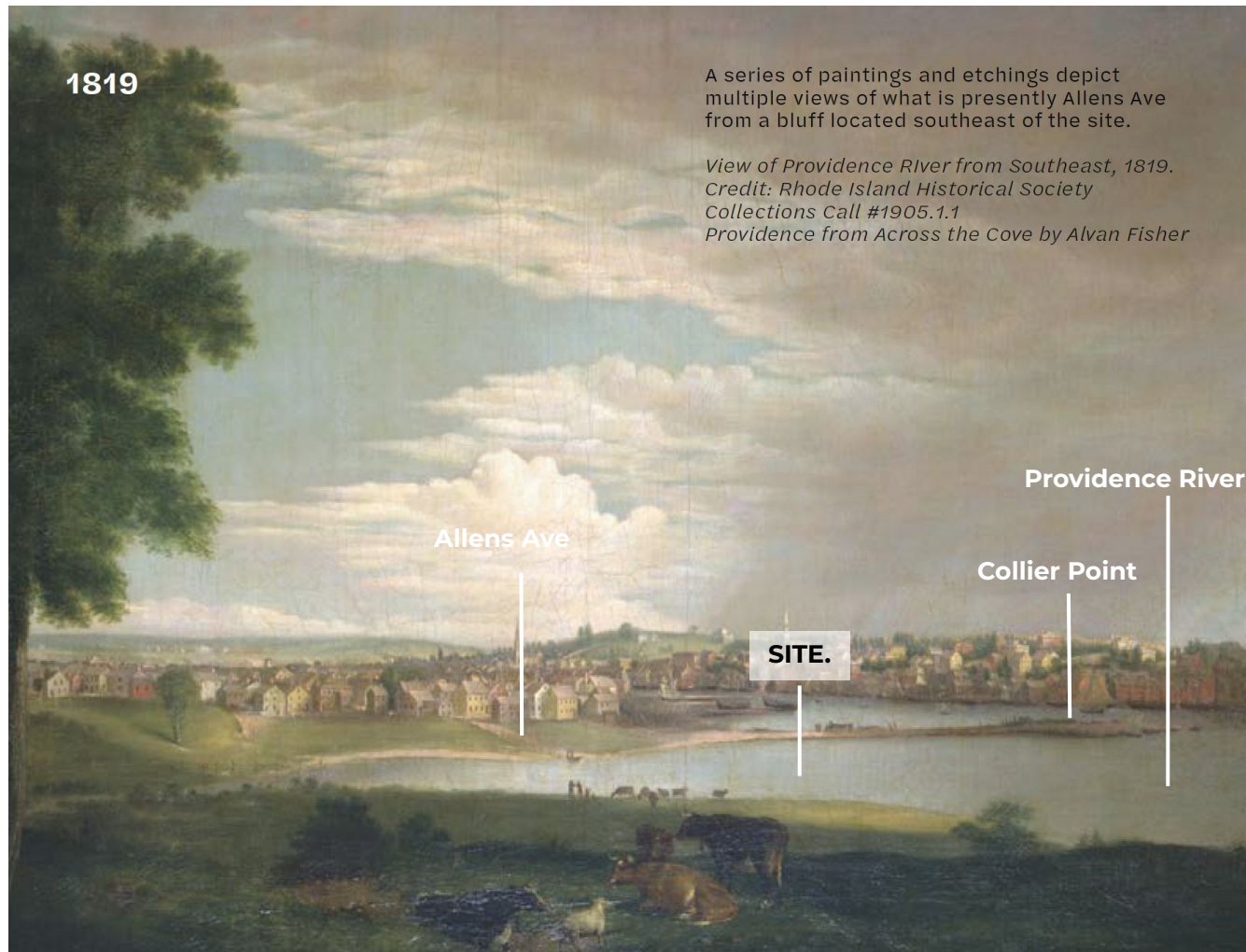




1819

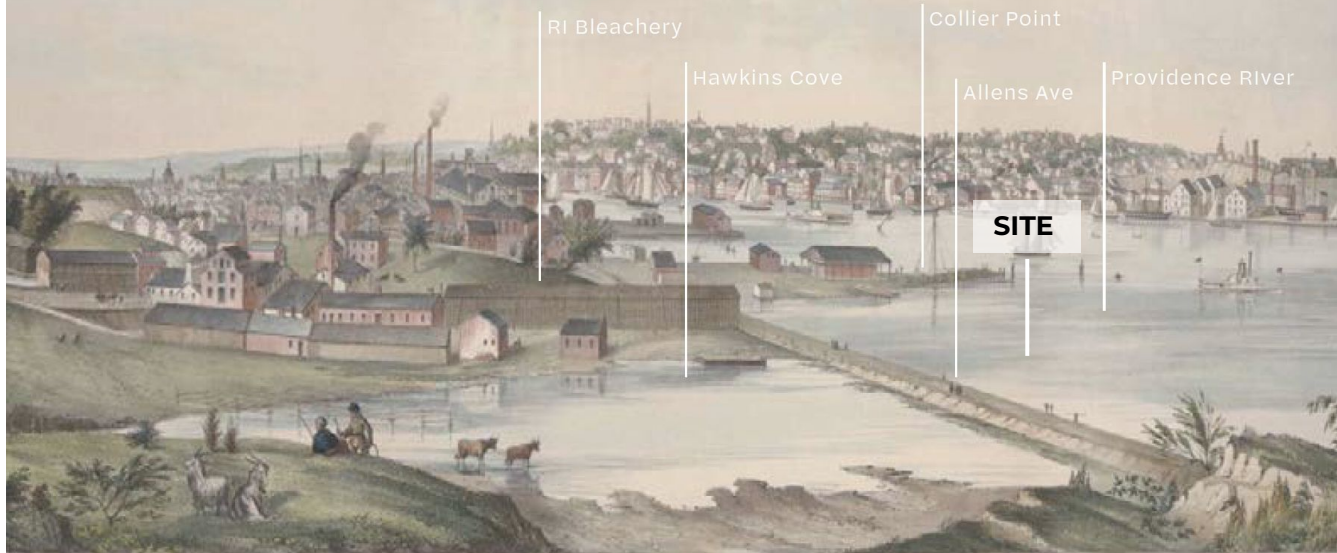
A series of paintings and etchings depict multiple views of what is presently Allens Ave from a bluff located southeast of the site.

*View of Providence River from Southeast, 1819.*  
Credit: Rhode Island Historical Society  
Collections Call #1905.1.1  
*Providence from Across the Cove by Alvan Fisher*



1849

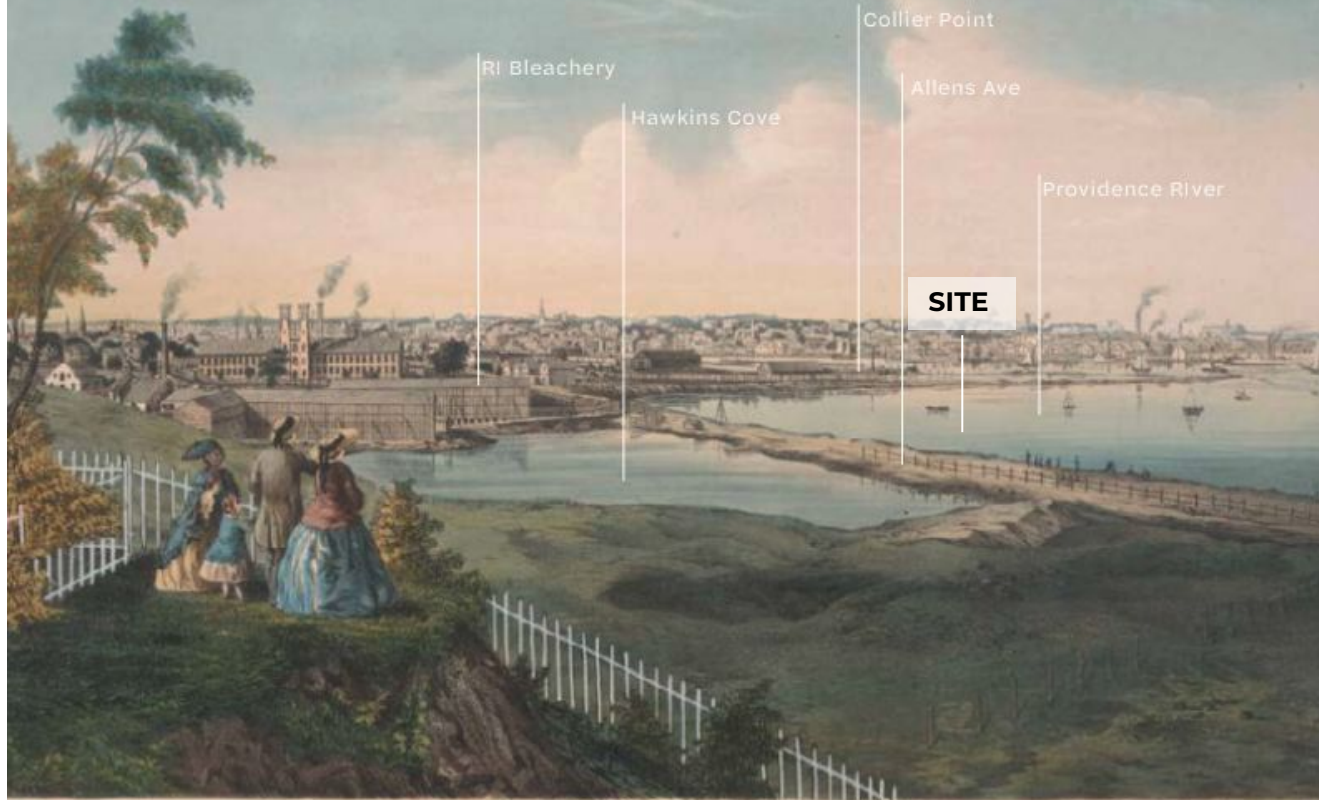
*View of Providence River from the South, 1849. Charles Burton.  
Credit: Library of Congress*



VIEW OF PROVIDENCE R.I. FROM THE SOUTH 1849

**1858**

*Providence, R.I., harbor view, taken from the grounds of  
Geo. W. Rhodes, Esq. 1858, J.B. Bachelder  
Credit: Library of Congress*



RI Bleachery

Hawkins Cove

Collier Point

Allens Ave

Providence River

**SITE**

2022

Collier Point Park

Providence River

The historic waterfront has been altered, with bluffs flattened, wetlands filled and paved, and commercial development and industrial infrastructure situated in the river's floodplain.

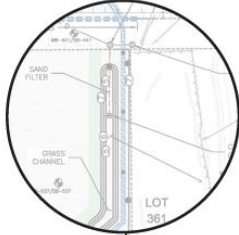
SITE.

Public St.

Allens Avenue



EXISTING DRAIN OFFLATT AT -2.06' CAPPED ADJACENT LOT DRAINING INTO BIO-RETENTION AREA. EXPLORE UTILIZING FOR STORM DETENTION. POTENTIAL DISTURBANCE OF EXISTING SUBSURFACE CONTAINMENT WALL.



POTENTIAL SCREENING OF ADJACENT LOT FOCUSING VIEW TOWARDS BAY AREA IN GREEN INDICATES EMERGENCY VEHICLE ACCESS ONLY. POTENTIAL FOR MORE GREEN SPACE IN THIS AREA. EXISTING DRAIN LINE RUNS THROUGH PUBLIC ST.



LEAVE CLEAR FOR TIRE BARN OPERATIONS. CONFIRM TRUCK SIZE + FREQUENCY TO DETERMINE SPATIAL REQUIRES. ALSO, GATE TO ADJACENT PARCEL TO REMAIN CLEAR FOR TRUCK ACCESS



LEAVE OPEN FOR POTENTIAL FUTURE STORE FOREFRONT. POTENTIAL PARKING AREA



SALT PILE SIZE FLUCTUATES THROUGHOUT YEAR. CONSIDER SCREENING AT THIS PORTION. POTENTIAL AREA FOR PARKING



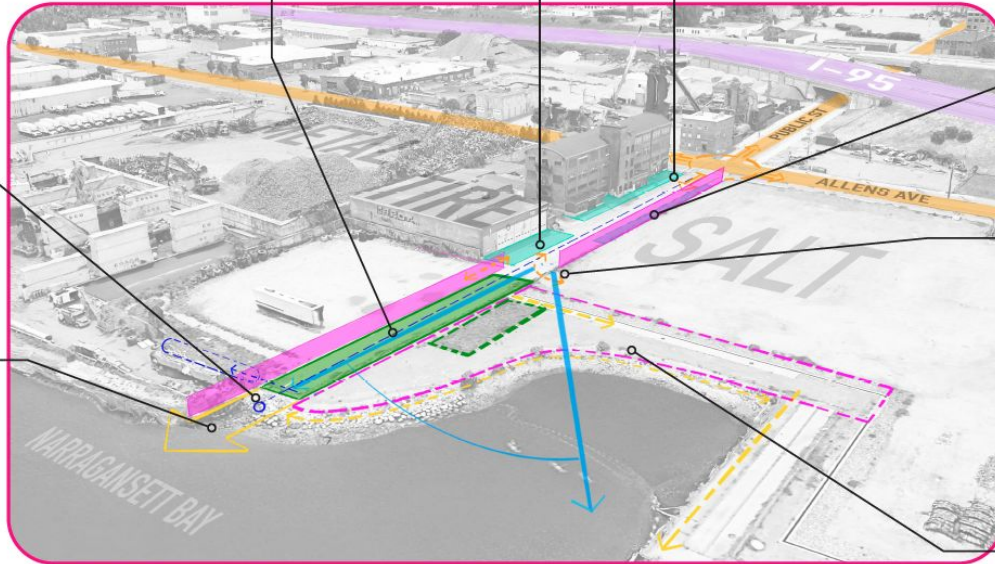
POTENTIAL WATER ACCESS AND/OR LANDPIER EXTENSION. CLEAR VIEWS TO BAY. MEAN HIGH TIDE AT -1.23' (NGVD 29) MEAN LOW TIDE AT -6.07' (NGVD 29). SEA LEVEL RISE SEEMS LESS OF A THREAT THAN STORM SURGES.



SALT PILE ENDS AT ACCESS GATE. MAINTAIN 25' CLEAR FOR TRUCK TURNING. VIEWS OPEN UP TO BAY AT THIS POINT. RETHINK FENCE AS WE MOVE TOWARDS THE BAY?



RHODE ISLAND ENERGY CAPPED PARCEL W/ SAND FILTER (GREEN DASH). POTENTIAL ACCESS AT EXISTING CONCRETE FOREBAY. OR EXPLORE ACCESS AT EXISTING FENCE/RIPRAP EDGE. EXPLORE FEASIBILITY OF CONNECTING TO EXISTING PIER

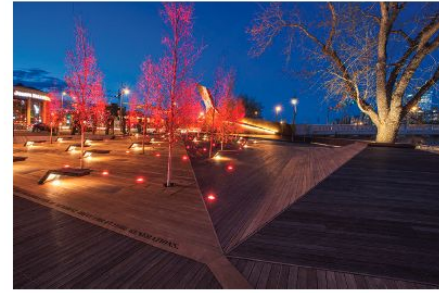
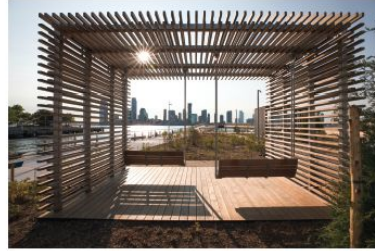


# DESIGN CONCEPTS







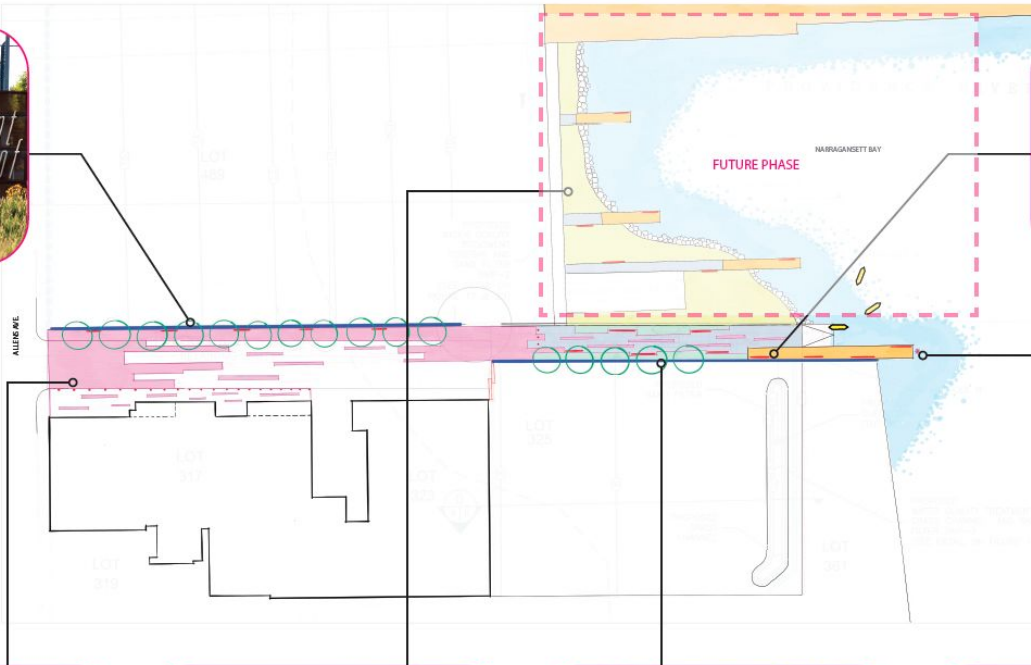




ARCHITECTURAL SCREENING AND SIGNAGE AT ENTRY



ARCHITECTURAL FRAMING OF VIEWS WITH INTEGRATED SEATING



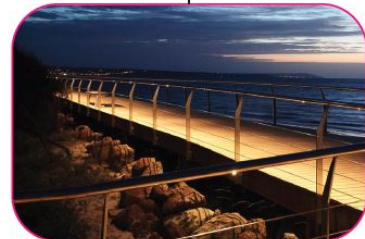
SHARED STREET WITH EXPRESSIVE PAVING DEFINING PEDESTRIAN/VEHICULAR MOVEMENT



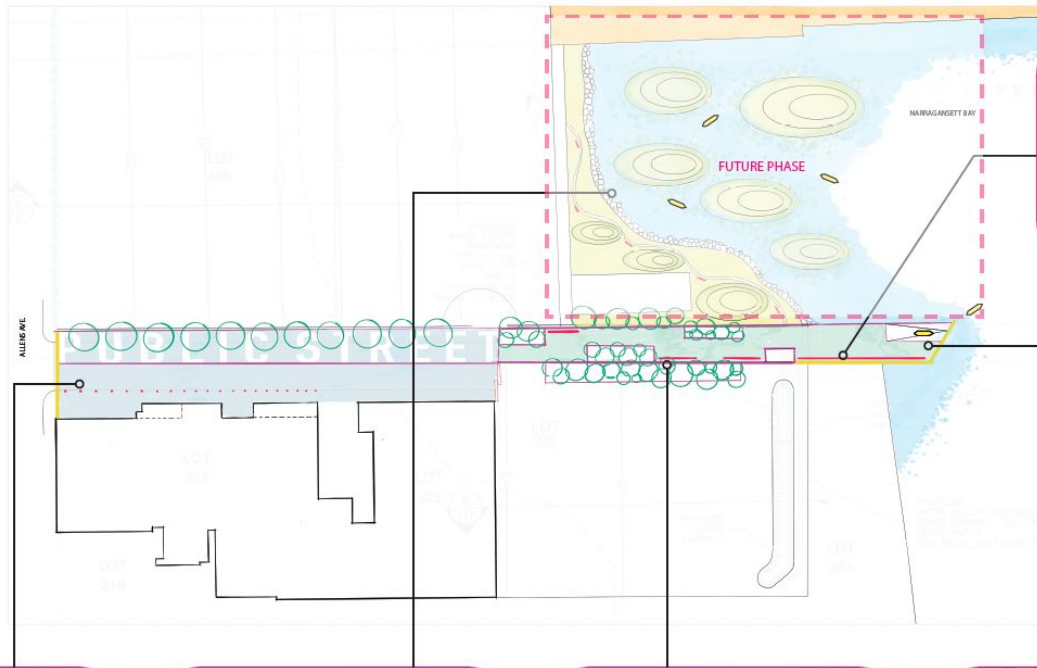
ADDITIONAL SOIL ADDED TO CAP TO ALLOW FOR NATIVE MEADOW/MOWED PATH/BENCHES



GROUND MATERIAL BREAKS DOWN INTO MORE PERMEABLE AND PLANTED LIKE AREA



A SIMPLE BUT BEAUTIFULLY CONSTRUCTED PIER TO ALLOW FOR FISHING AND SMALL BOAT ACCESS TO WATER



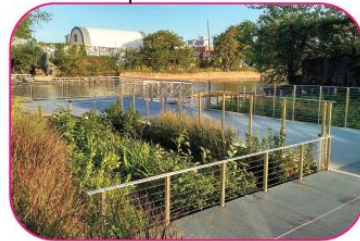
IS THERE A UNIQUE SIGNAGE/BRANDING OPPORTUNITY, THAT IS VISIBLE FROM AROUND THE BAY?



VERY SIMPLE ASPHALT OR CONCRETE PAVING WITH PAINTED SUPER GRAPHIC



IN ADDITION TO NATIVE MEADOW, CREATION OF HABITAT CREATING BARRIER ISLANDS

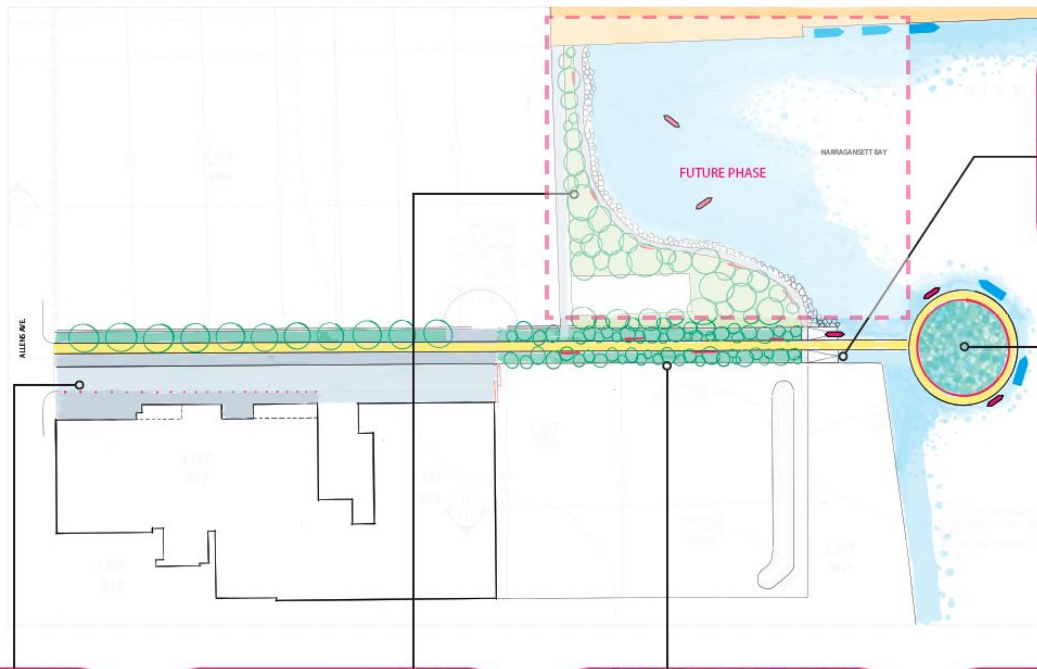


A BOARDWALK MEANDERS AROUND AND ABOVE A WATER CLEANSING BIO-PLANTER WHICH STORMWATER WOULD BE DIRECTED INTO



THE BOARDWALK WOULD EXTEND OUT INTO THE BAY, PROVIDING SMALL BOAT AND FISHING ACCESS WITH A UNIQUE ARCHITECTURAL FRAMING ELEMENT





WE WILL EXPLORE INTERESTING WAYS TO STEP DOWN TO THE WATER'S EDGE



STRONG BUT SIMPLE LINEAR PAVING THAT "ROLLS OUT THE CARPET" DIRECTLY INTO THE WATER



PLANT A "FOREST" OF NATIVE TREES WITH A STONE DUST WALKING PATH AT THE WATER'S EDGE



A MORE HEAVILY PLANTED LINEAR WALKWAY WITH BENCHES AND WIDE ENOUGH FOR SMALL BOAT ACCESS



A UNIQUE AND ICONIC PIER THAT IS AN ATTRACTION TO THE AREA. RECREATIONAL BOATS ARE ABLE TO DOCK AND THE CENTER SERVES AS A WILDLIFE HABITAT

# COMMUNITY CONVERSATIONS

A group of people are gathered around a long wooden table in a community meeting. Several individuals are seated at the table, looking at large yellow sticky notes that have handwritten text on them. One man in a blue shirt is writing on a sticky note. A woman in a red top is also writing. To the right, a man in a grey shirt is holding a coffee cup and talking to another man in a grey t-shirt. In the background, there are other people, an American flag, and a projector screen. The room has a drop ceiling with recessed lights.

# GOALS FOR PUBLIC STREET

## Goals for Public Street

How can we ensure that this is a space that everyone can enjoy?



ACCESS



SAFETY + SECURITY



SUSTAINABLE DESIGN



PARKING



PLAY + EXERCISE



ART/CULTURE BASED  
ENGAGEMENT



GREEN SPACE



SENSORY  
EXPERIENCE



SEATING



HABITAT  
RESTORATION



WATER QUALITY



LIGHTING



EDUCATIONAL  
OPPORTUNITIES



SHADE



MAINTENANCE



PEDESTRIAN +  
VEHICLE TRAFFIC

# PRIORITIES FOR PUBLIC STREET



# Priorities for Public Street

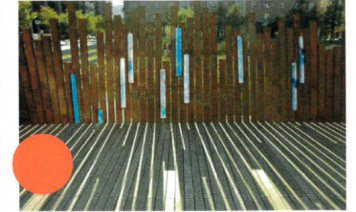
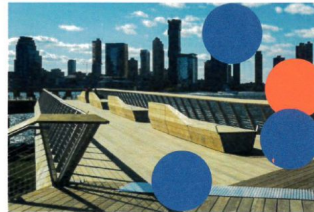
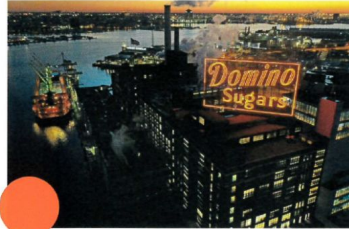
What design elements should be prioritized?



LOVE this idea!



YES, this is well aligned with identified goals



# CHALLENGES FOR PUBLIC STREET

## Challenges and Opportunities for Public Street

What is missing and what are some challenges in this space? What other opportunities exist at this place?

### CHALLENGES

What's open for discussion?



### OPPORTUNITIES

How can this project help achieve the identified goals?



**THANK YOU!**  
**NEXT STEPS**