

Addendum: Proposed Edits

The following edits to the draft Comprehensive Plan are proposed in response to community feedback.

Land Use

1. Edit the Future Land Use Map designation description for “Business/Industrial” and “Waterfront/Port” to add (in green):

“...Clean, sustainable, and resilient economic development should be prioritized. The city may prohibit future industrial uses that it determines go against the public interest of (a) public health and quality of life in near-industry neighborhoods or (b) realizing fossil fuel emissions reduction goals in response to climate change.”

2. In “Objective LU5 - Protect Areas for Business and Industry”:

Edit Strategy F to read: “Study and support the implementation of policies in partnership with state and federal authorities to regulate the cumulative environmental impact of large-scale industrial development projects in areas of concentrated industrial use.”

Add a new Strategy G, reading: “The City will facilitate new, clean, sustainable, and resilient uses in the waterfront/port zone by working with stakeholders to (1) identify the water-dependent industries it wants to attract (e.g. wind industry), (2) identify those industries’ needs, and (3) work with industry to develop the modern infrastructure to address those needs (e.g. modern piers providing access to the deepwater channel).”

3. In the section entitled, “Zoning Changes,” amend to read as follows:

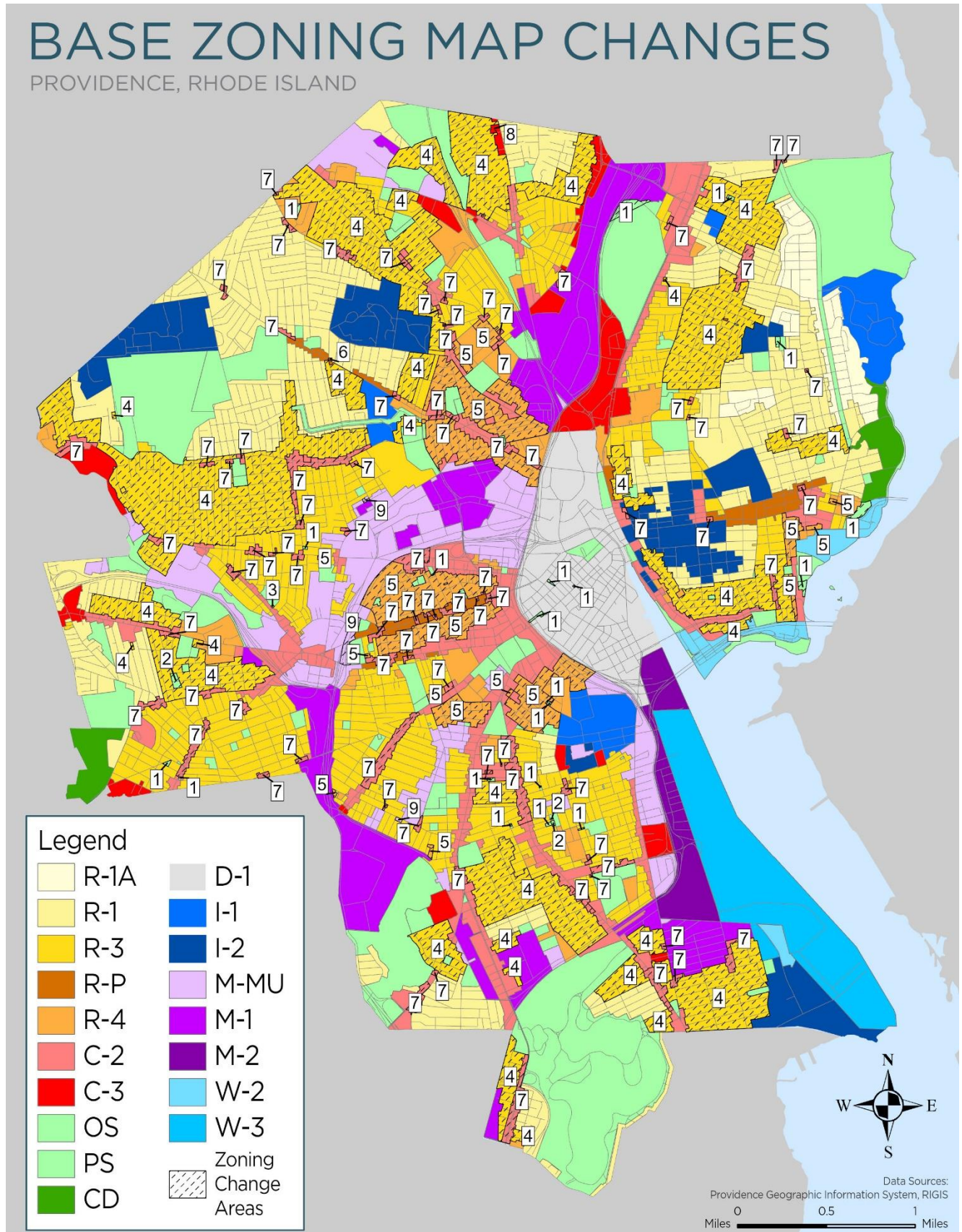
The following maps and tables reflect all proposed changes to the base and overlay zoning maps to be consistent with the future land use map. Any future changes to the zoning maps must be consistent with this comprehensive plan and the future land use map.

The proposed Overlay Zoning Map contains properties proposed for inclusion in historic districts. Several properties are being removed because they do not contain historic resources, due to subdivision or demolition. Except for properties without historic structures and those where the owner has requested or consented to a rezoning, the Department of Planning and Development will conduct a community engagement process that includes the property owners prior to introducing an ordinance to propose additions to historic districts.

4. Replace Maps 11.3, Base Zoning Map Changes and 11.5, Proposed Base Zoning Map to correct existing boundary of R1-A zone (below)
5. Insert Map 11.4, Overlay Zoning Map Changes (below)
6. Renumber Table 11.2, Base Zoning Changes as Table 11.1
7. Insert Table 11.2, Overlay Zoning Change Table (below)
8. Insert Map 11.6, Proposed Overlay Zoning Map (below)

BASE ZONING MAP CHANGES

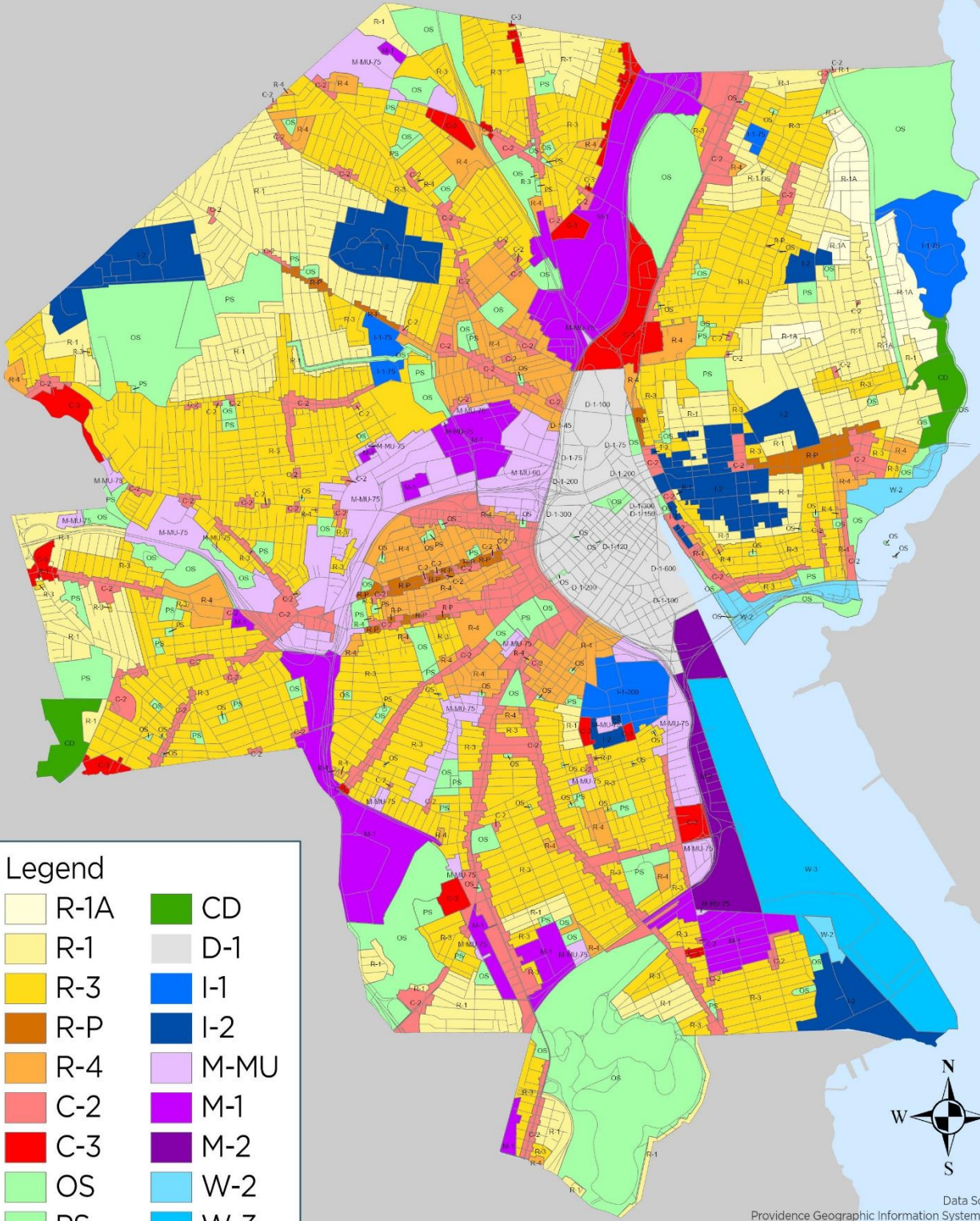
PROVIDENCE, RHODE ISLAND



Map 11.3 Base Zoning Map Changes

PROPOSED BASE ZONING MAP

PROVIDENCE, RHODE ISLAND



Legend	
R-1A	CD
R-1	D-1
R-3	I-1
R-P	I-2
R-4	M-MU
C-2	M-1
C-3	M-2
OS	W-2
PS	W-3

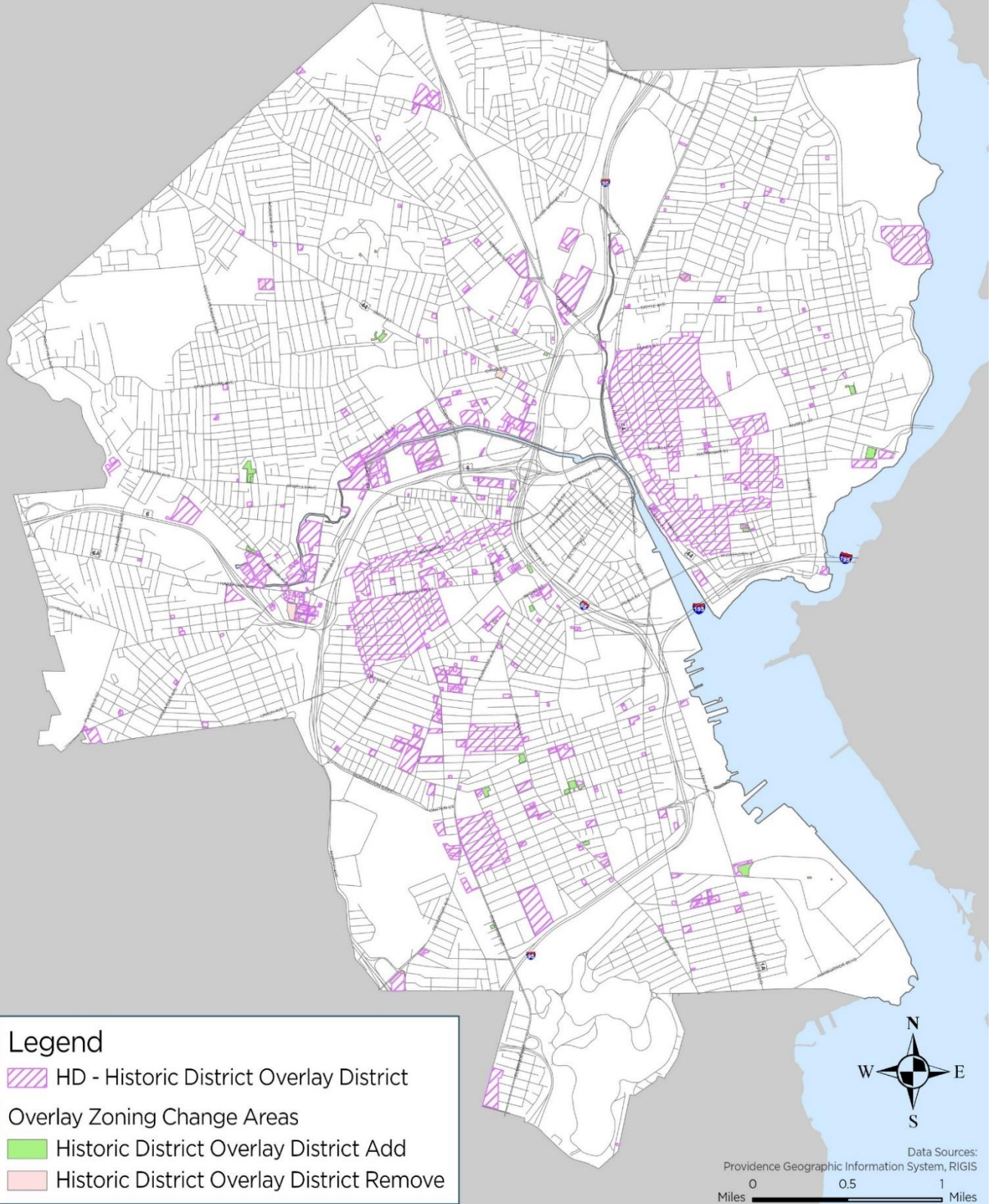
Data Sources:
Providence Geographic Information System, RIGIS

0 0.5 1 Miles

Map 11.5 Proposed Base Zoning Map

OVERLAY ZONING MAP CHANGES

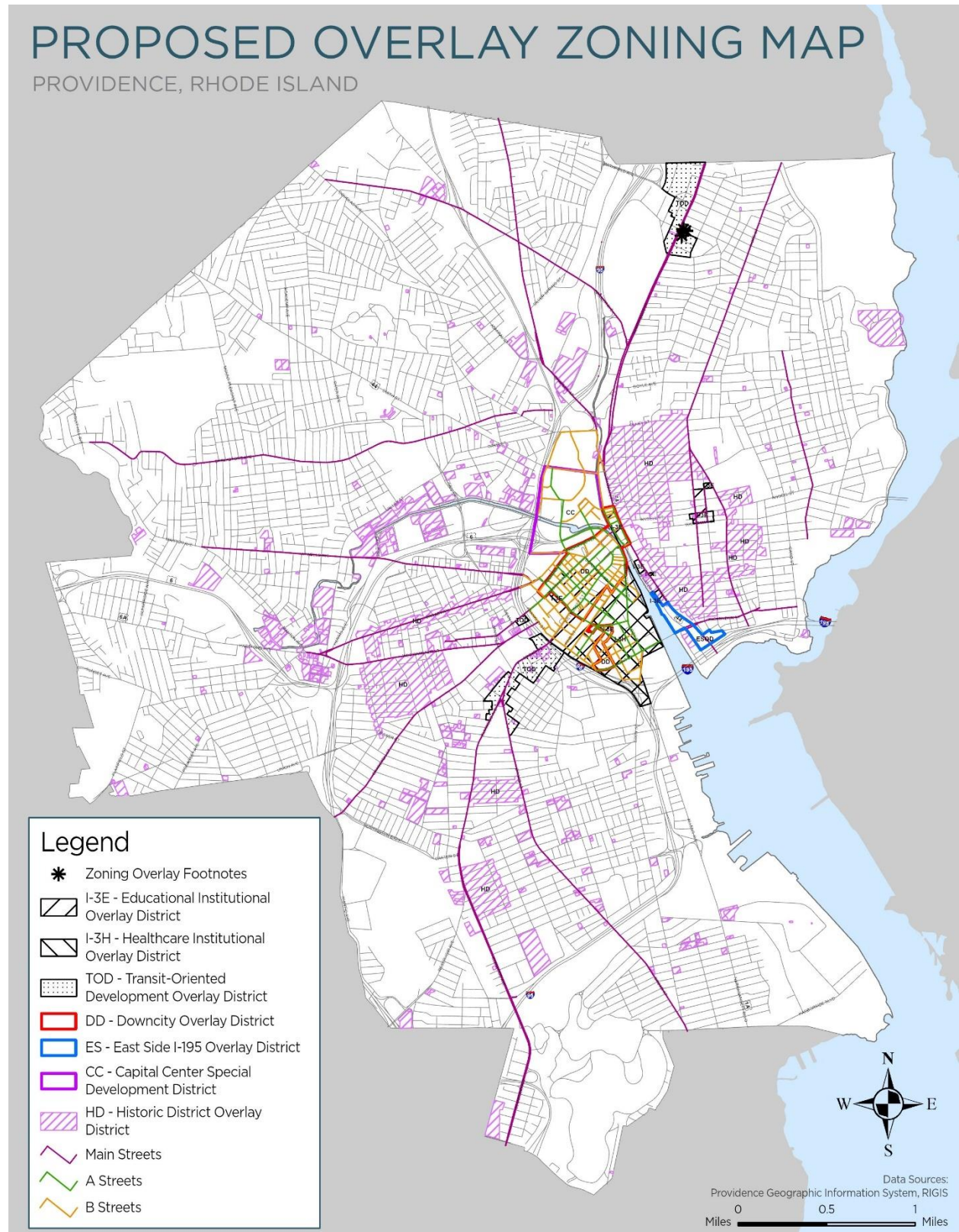
PROVIDENCE, RHODE ISLAND



Map 11.4 Overlay Zoning Map Changes

Add to Historic District		Remove from Historic District	
680	Allens Ave.	146	West River St.
49	Acorn St.	28	Agnes St.
111	Summer St.	290	Smith St.
41	Central St.	612	Academy Ave.
440	Potters Ave.		
25	Aleppo St.		
71	John St.		
7	Mount Hope Ave.		
4	Fox Place		
33	Magnolia St.		
130	8th St.		
235	Eaton St.		
177	Eaton St.		
29	Sprague St.		
777	Elmwood Ave.		
332	Reservoir Ave.		
299	Waterman St.		
321	Waterman St.		
75	Arnold St.		
71	John St.		
92	Hope St.		
710	Westminster St.		
50	Orchard Ave.		
239	Oxford St.		
16	Croyland Road		
265	Oxford St.		
747	Broad St.		
1014	Broad St.		
34	New York Ave.		
34	New York Ave.		
911	Atwells Ave.		
901	Atwells Ave.		
211	Carleton St.		
31	Candace St.		
24	Douglas Ave.		
50	Convent St.		

Table 11.2 Overlay Zoning Change Table



Map 11.6 Proposed Overlay Zoning Map

Mobility

1. In “Objective M2: Rail,” add the following strategies:

“D. Advocate for secure bike parking at the train station such as lockers, a controlled access bike cage, or other designs that minimize the risk of bike theft.”

“E. Improve routes to the train station for walking and bicycling to reduce traffic congestion and encourage train ridership.”

2. In “Objective M4: Bicycling,” add the following strategies:

“I. Explore adding enhanced bicycle parking in the public right-of-way and at City-owned facilities including secure bike parking options.”

“J. Work with colleges and universities to improve bicycling access in the vicinity of and on their campuses.”

“K. Add wayfinding signage on bike routes to improve navigation.”

3. In “Objective M5: Driving” add the following strategies:

“T. Evaluate existing on-street parking policies to enhance quality of life in neighborhoods particularly impacted by major institutions and attractions.”

“U. Improve road safety by analyzing crash history and employing traffic calming measures.”

“V. To reduce automobile use, encourage employers to provide subsidized transit passes to employees, and for universities to provide subsidized transit passes to students.”