

#1

PROJECT OVERVIEW: SCOPE AND BOUNDS

WELCOME AND INSTRUCTIONS

The City of Providence is kicking off the **Riverwalk Resilience Project** to revitalize and enhance Waterplace Park and the adjacent Riverwalks with sustainable and resilient infrastructure for improved connectivity, accessibility, placemaking, and programming to foster sustainable growth for the downtown area.

We are excited to welcome your ideas and feedback on the future of the park and riverwalk to ensure the public spaces are accessible, inclusive, safe and vibrant.

Please visit each of the boards and share your ideas with the team!

PROJECT GOALS

- ♥ **Preserve & Rehabilitate what people love**
- 🚶 **Expand Placemaking & Programming**
- 🛡️ **Improve Safety & Increase Use**
- 🚲 **Provide Connectivity & Accessibility**
- 🌱 **Create Ecological Benefits & Resiliency**

What other goals or aspirations do you have for the project?

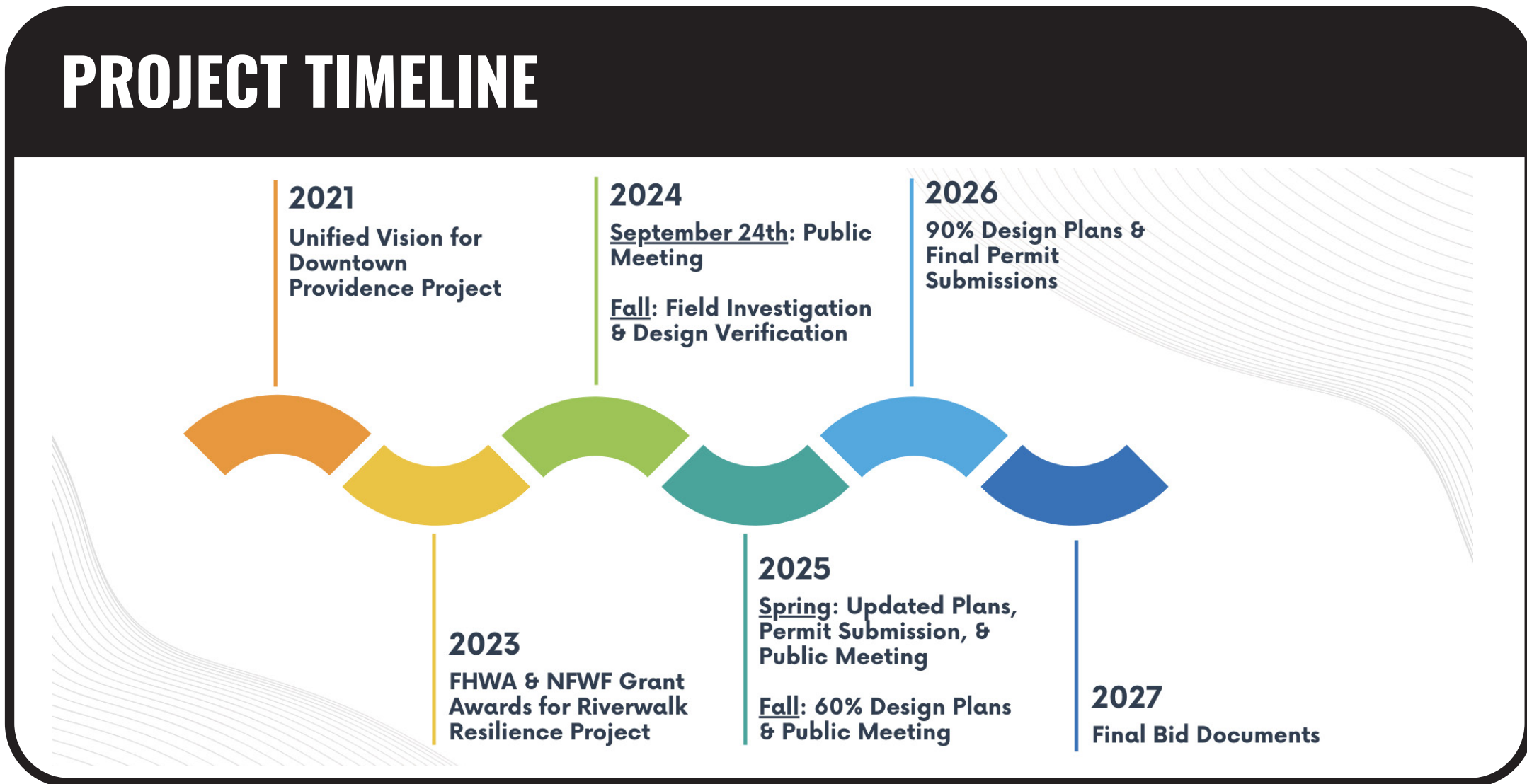
Use the Sticky Notes provided to share other goals or aspirations, and stick them on the board below.

Help us prioritize the project goals?

Scan the QR code.

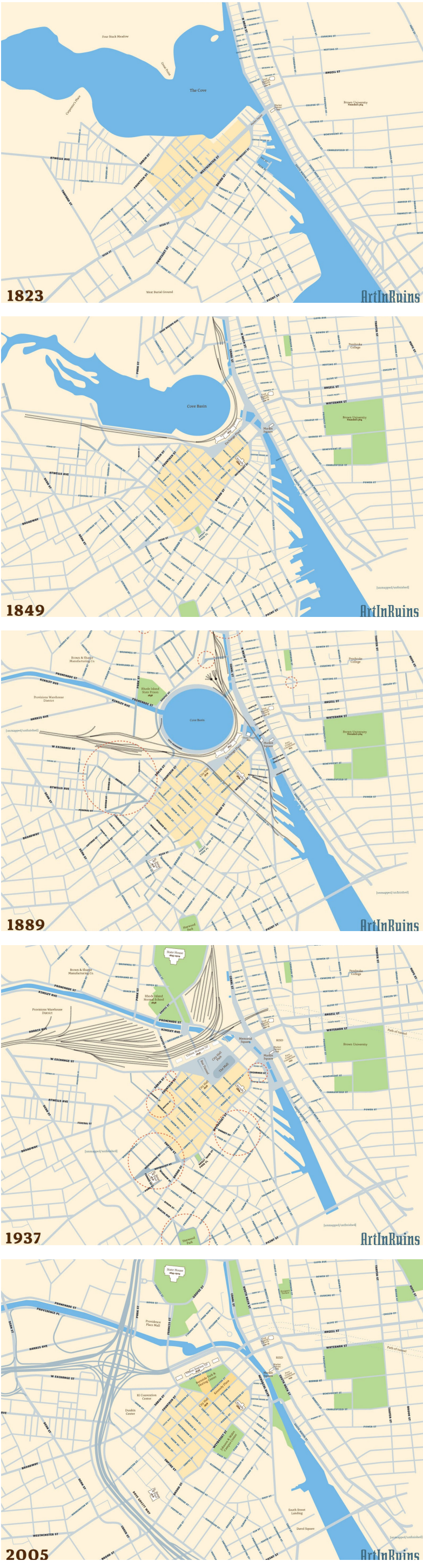


PROJECT TIMELINE



2021 Unified Vision for Downtown Providence Project	2024 September 24th: Public Meeting Fall: Field Investigation & Design Verification	2026 90% Design Plans & Final Permit Submissions
2023 FHWA & NFWF Grant Awards for Riverwalk Resilience Project	2025 Spring: Updated Plans, Permit Submission, & Public Meeting Fall: 60% Design Plans & Public Meeting	2027 Final Bid Documents

HISTORY OF SITE



The Woonasquatucket River was an important route for indigenous tribes including the Wampanoag and Narragansett. Its strategic location at the north end of the Narragansett Bay, and the connection inland, made it an important meeting place.

The River and its immediate surroundings have changed dramatically over the past 200 years. Before the 19th century, the river flowed into a tidal area referred to as the 'Great Salt Cove.'

The images on the left, sourced from the Art in Ruins website (artinruins.com) captured how the cove has been shaped by multiple forces including development, transit, and the creation of public space.

COMMENTS:

Use a post-it note and add your thoughts here.

PROJECT SITE

DIRECTIONS:

Tell us about your connection to the site.

Use the dots to tell us where you live and work.

- Blue Dot - Home
- Red Dot - Work




#2

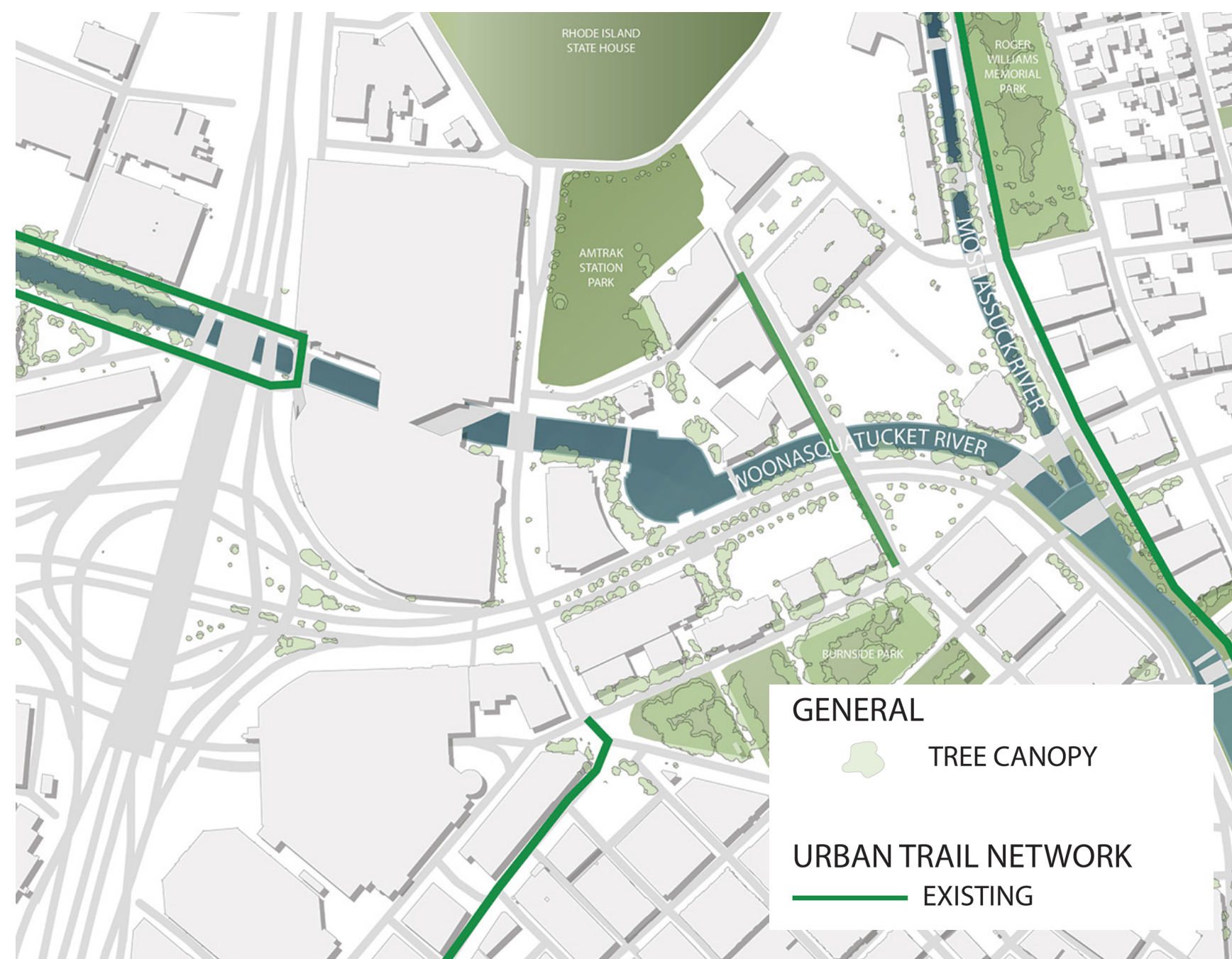
ACCESSIBILITY AND MOBILITY

OVERVIEW

On this board we would like to hear what forms of mobility the site should support.

MOVEMENT NETWORKS

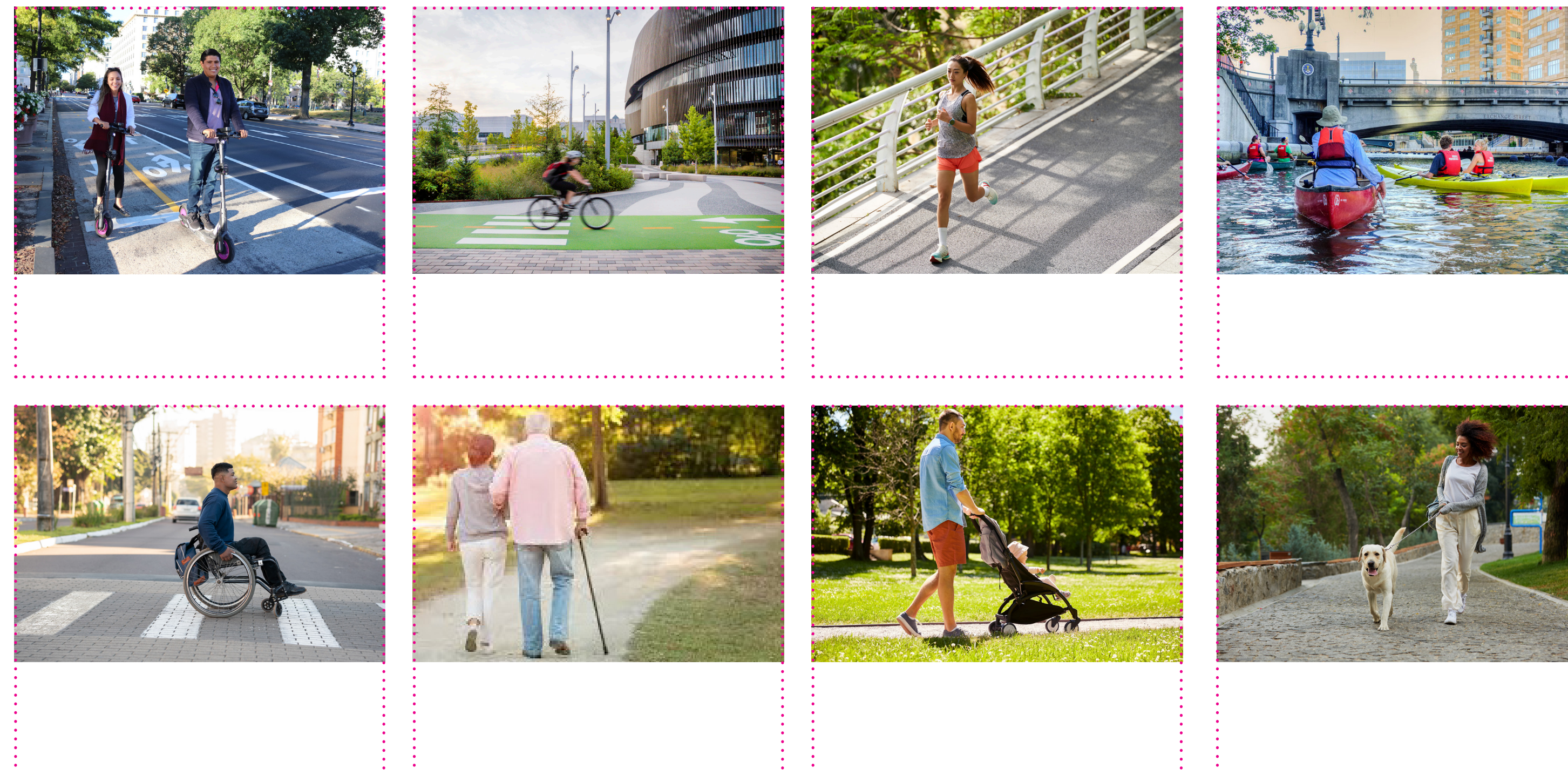
The Riverwalk currently supports visitors moving in a variety of ways, including walking, running, biking, kayak, and others.



MOVING THROUGH THE SITE

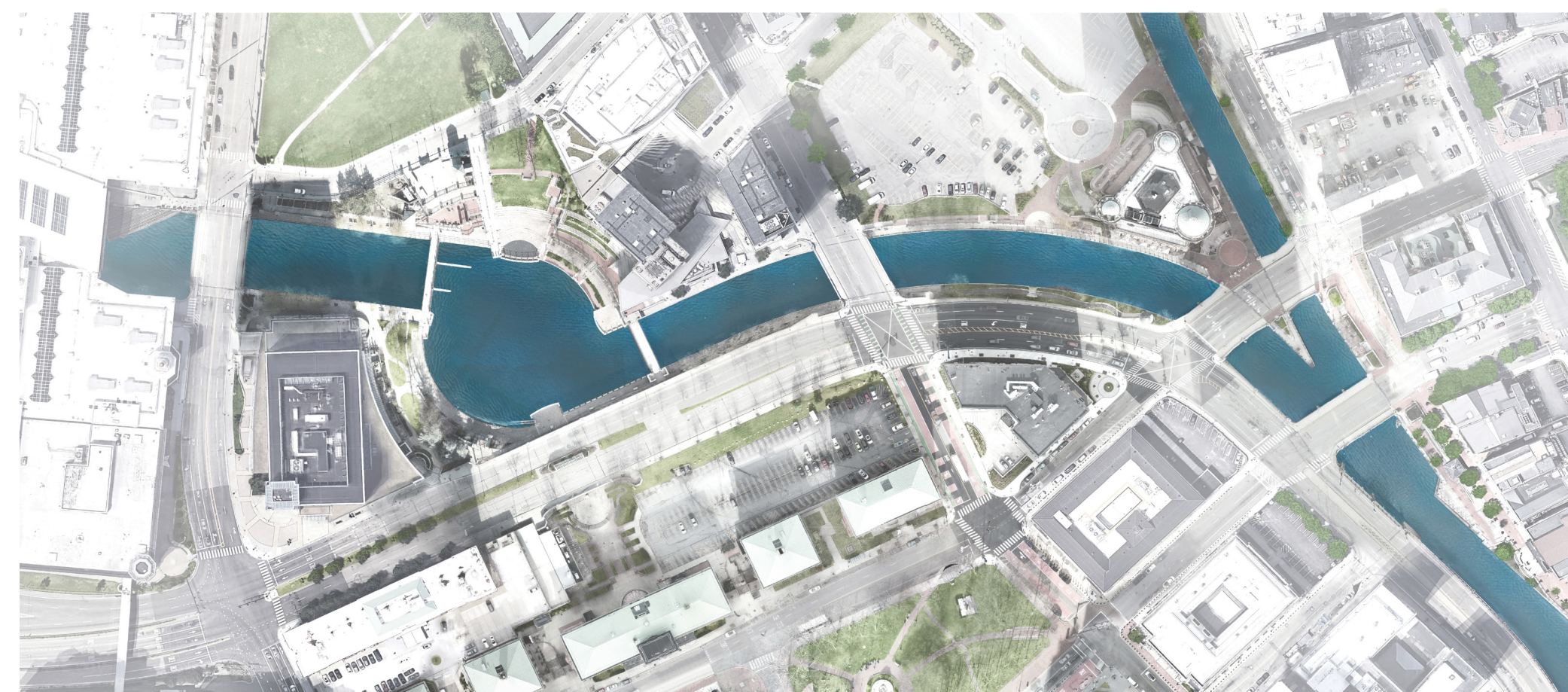
What forms of movement would you like to see moving through the Riverwalk?

Use the dots to indicate what types of movement the project should support.



How do you move through the site? Where do you want to go? Where are you coming from?

Use one of the sheets of trace paper to draw your path through the site using the City map on the table. Please also write how you are moving through the site: walking, running, bike, scooter, etc.



What kind of bicyclist are you? How would you move through this area?

Scan the QR code below to tell us more about how you use your bike to move through the site and the City.



COMMENTS:

- What changes to the site would make you want to travel to or through this area?
- What routes through the site would be most useful or interesting for you?
- What goals or aspirations should be considered for access and mobility?

Use a post-it note and add your thoughts here.

#3

POINTS OF ENTRY, CONNECTION AND VISIBILITY

OVERVIEW

At this station, we invite you to share your thoughts about how to connect the Riverwalk with other downtown spaces and how to enhance safety and visibility.

POINTS OF ENTRY AND CONNECTION

Like any public space, the success of the Riverwalk is closely related to the visibility, connectivity, and safety of the area and its surroundings.

DIRECTIONS:

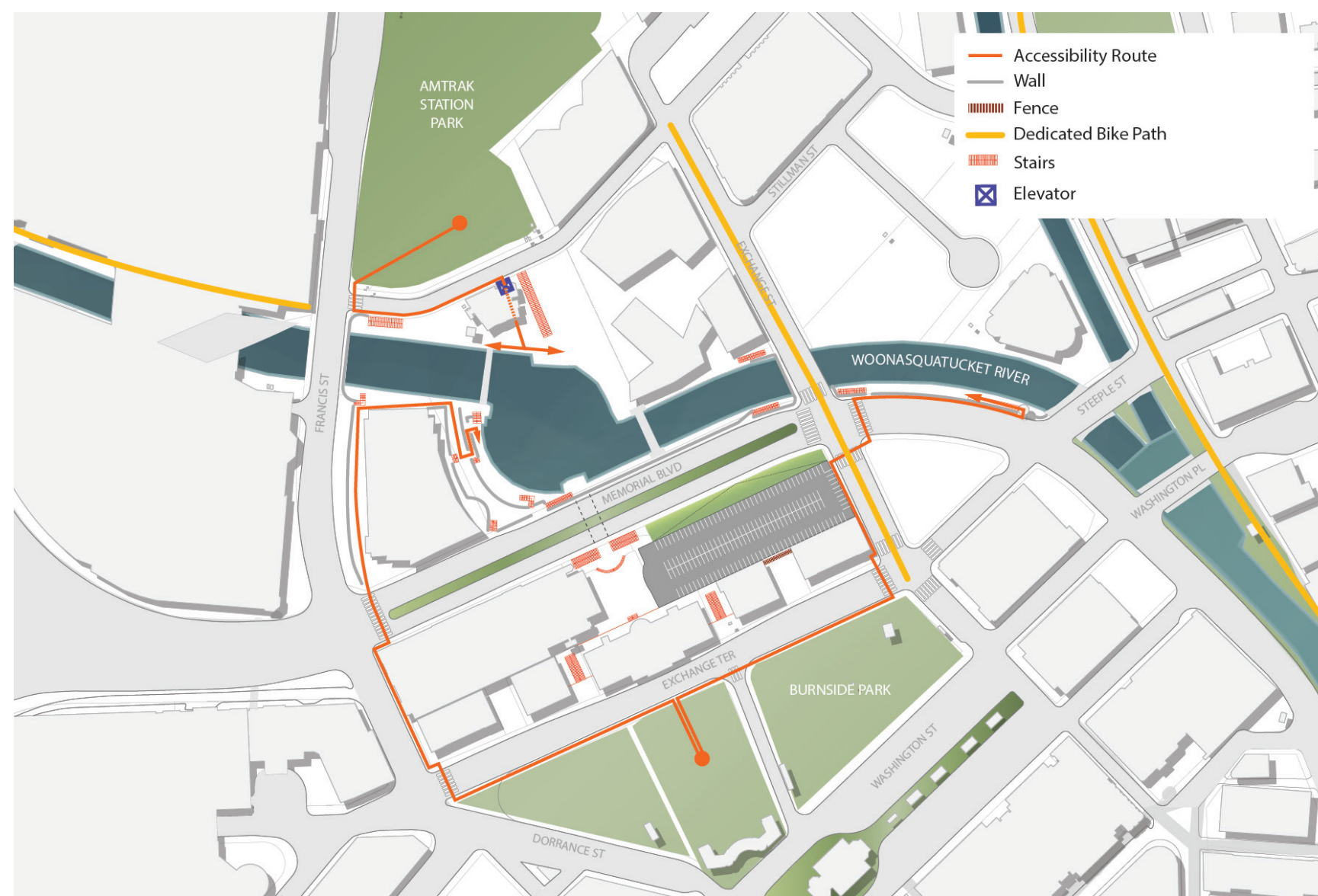
Tell us about how you enter and view into the site.

What are the ideal approaches / points of entry for the Riverwalk?

Where and how should the Riverwalk be visible from street level above?

Please use the sticky arrows and dots to indicate points of entry and view points into the site.

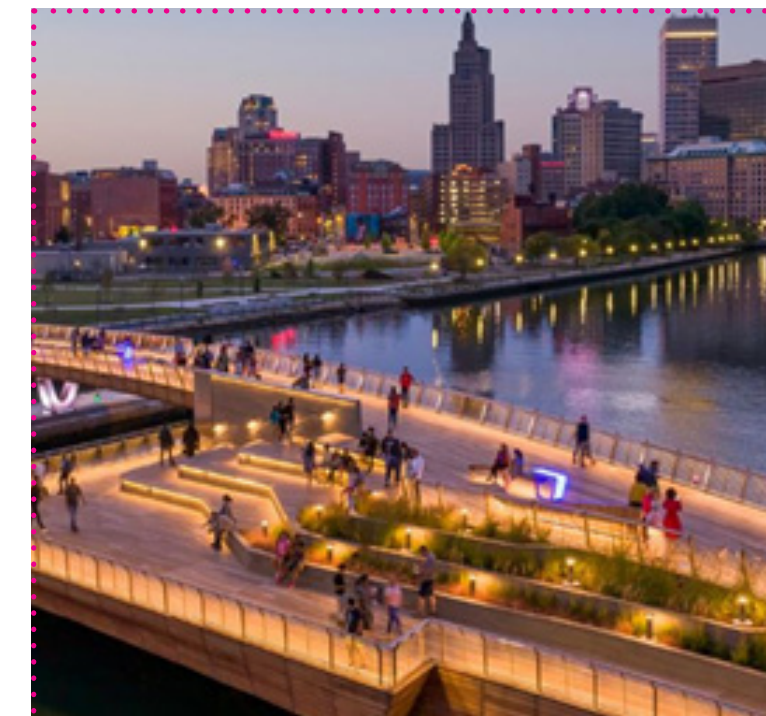
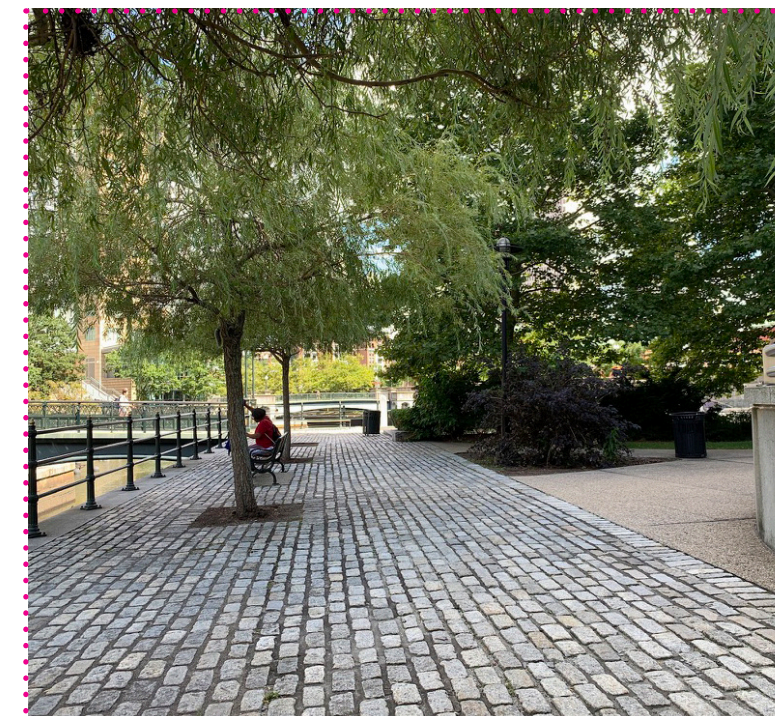
- Arrow - Point of Entry
- Dot - View Point



SAFETY AND VISIBILITY

What types of spaces would feel most comfortable and welcoming at the Riverwalk?

Use dots to indicate which images best balance safety and visibility with the desire for comfort and refuge at the Riverwalk.



MEMORIAL BOULEVARD TUNNEL

How should the pedestrian tunnel beneath Memorial Boulevard at Waterplace Park be used?

Share your thoughts.

Scan the QR code below to share your thoughts on the future of the tunnel beneath Memorial Boulevard.



#4

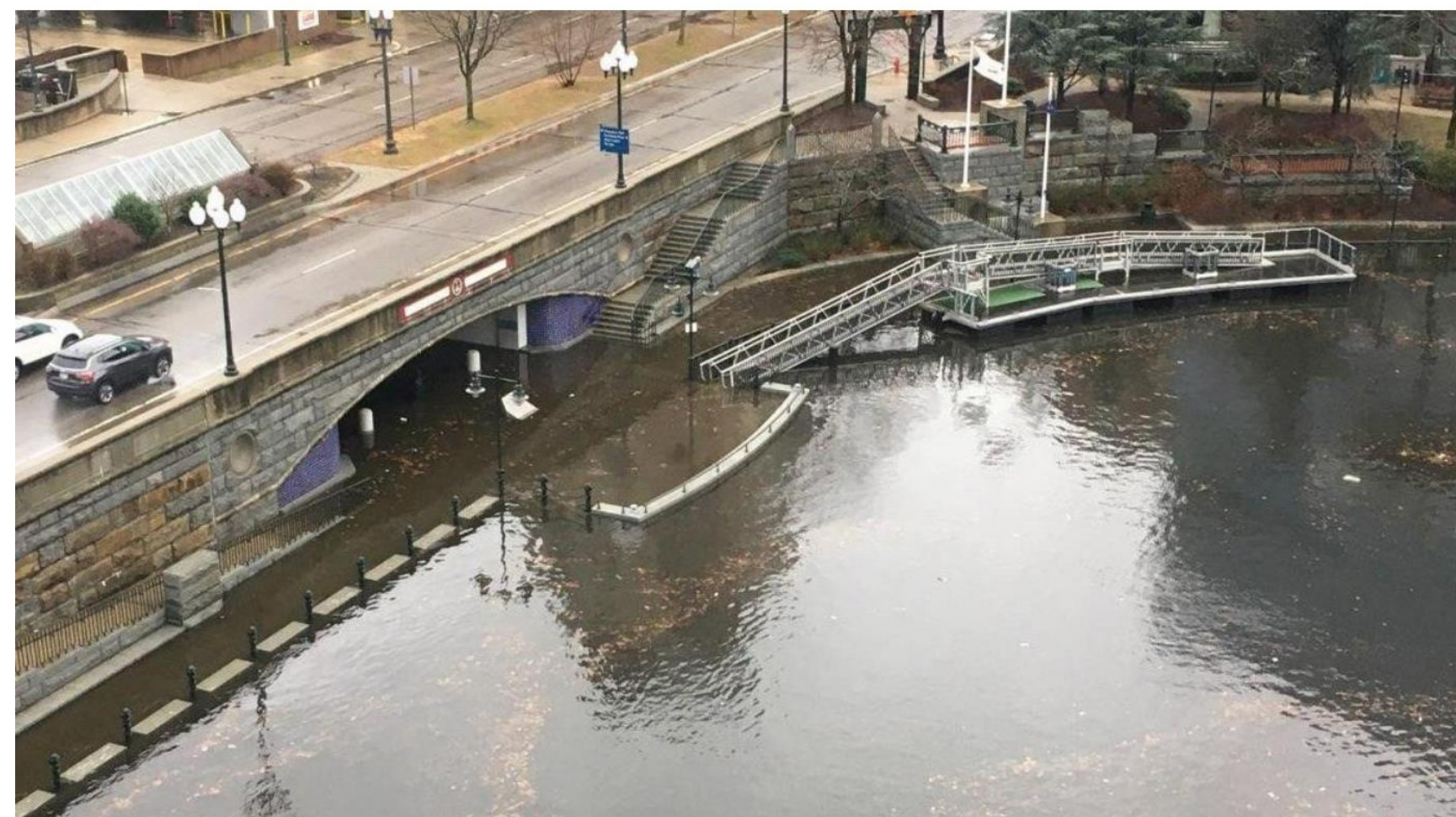
RESILIENCE AND CONNECTION TO THE WATER

OVERVIEW

On this board we invite you to learn about the risks and think about how we collectively balance our flood mitigation with access to the water.

A RESILIENT RIVERWALK

Any improvements to the Riverwalk must acknowledge the realities of rising sea level and the increasing risk of flooding.



Is it important to you that weekly/monthly tidal flooding not block access along the Riverwalk?

Is it important the Riverwalk stay close to the water elevation in the river, even if the Riverwalk occasionally floods?

Share your thoughts.

Scan the QR code to share your thoughts on how to balance flooding mitigation with access to the water.

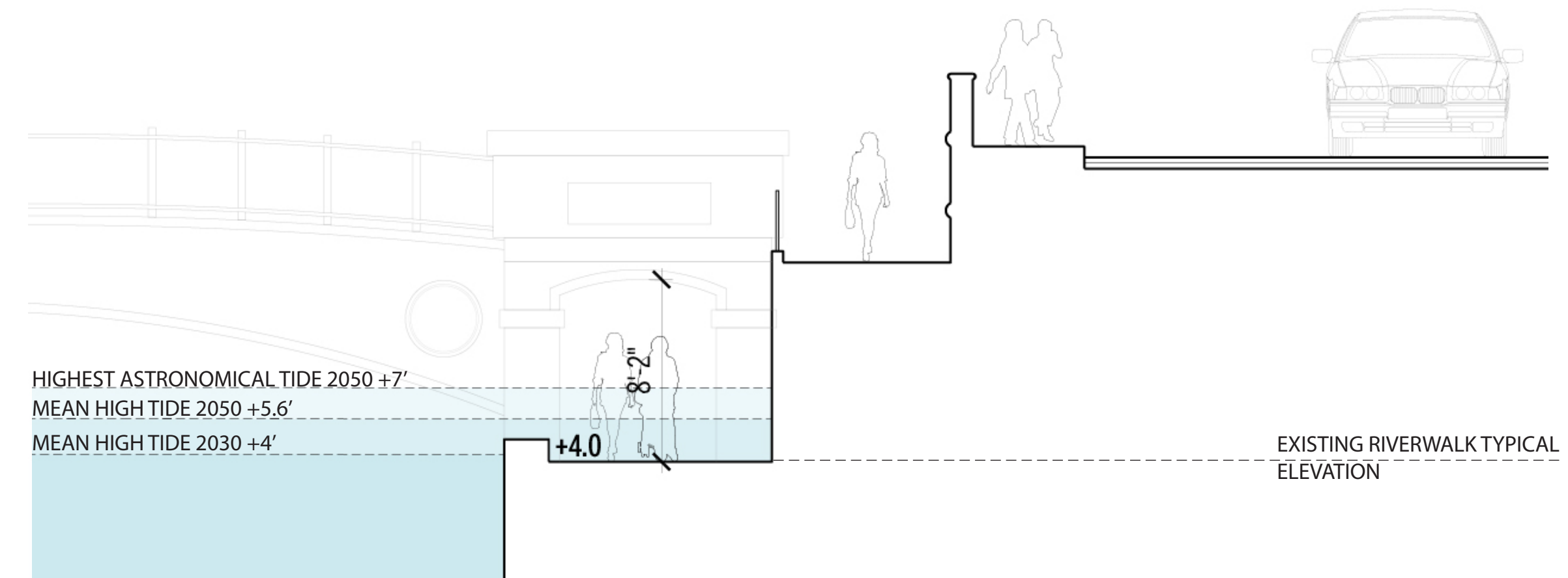


PROTECTING FROM AND CONNECTING WITH THE RIVER

Take a moment to look at the diagram that shows the realities of the rising sea level.

The Mean High Tide illustrates the highest flood level that is expected to occur on a daily basis.

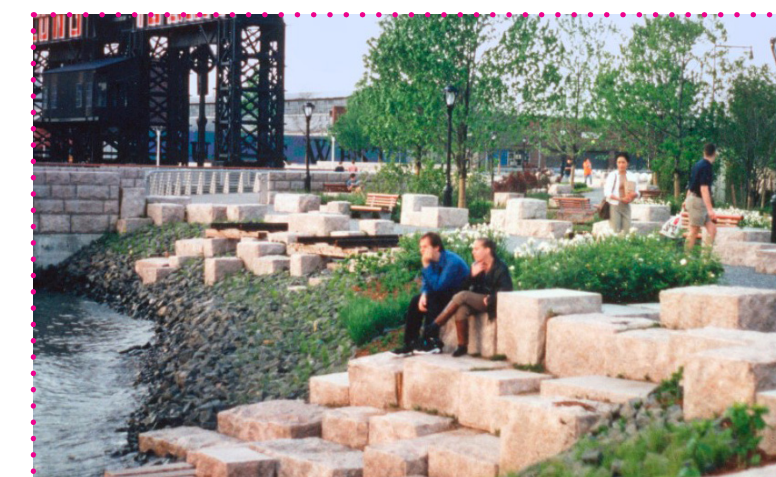
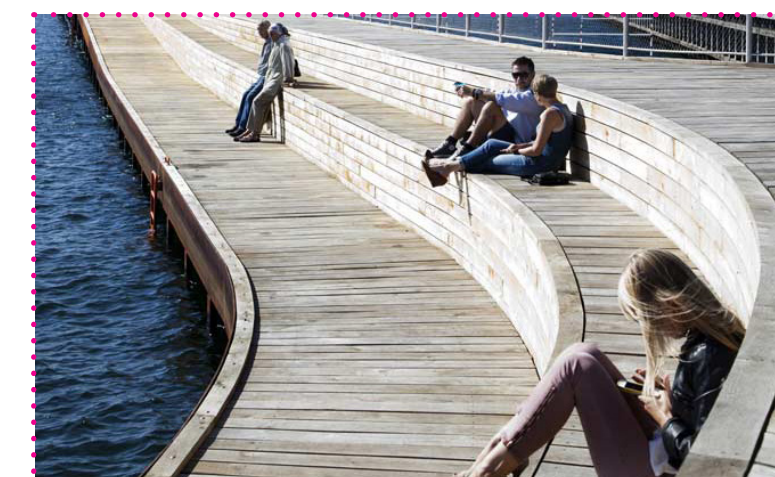
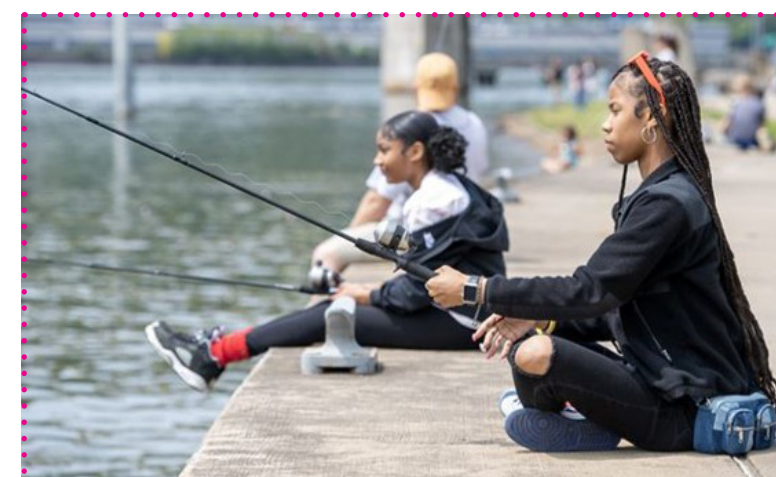
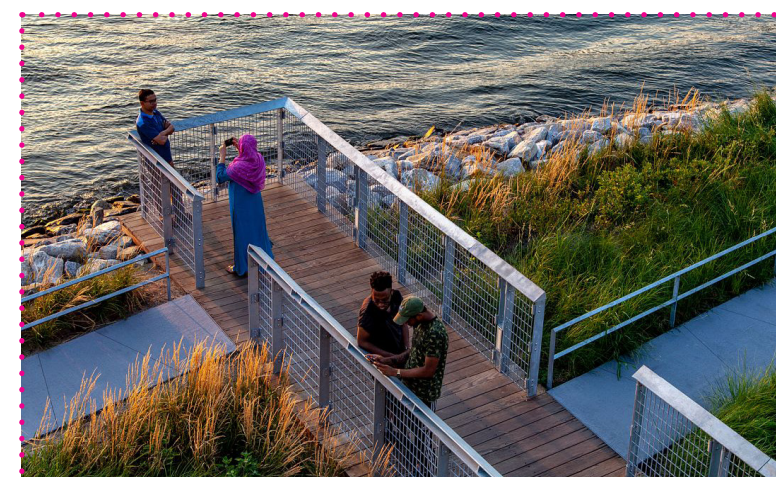
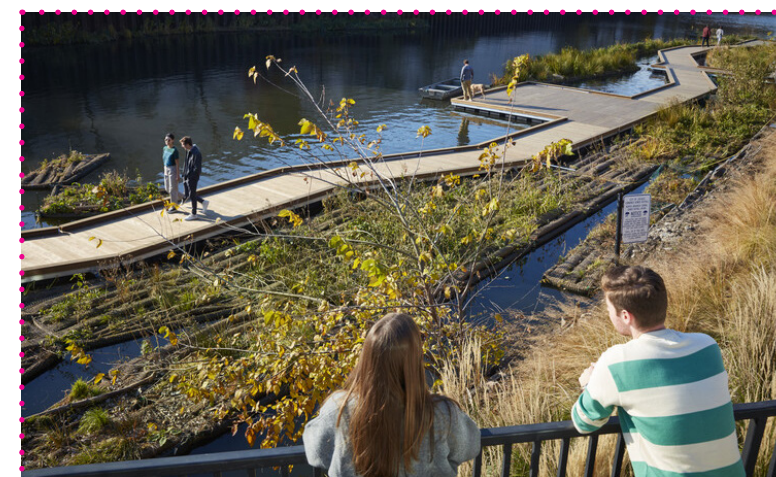
The Highest Astronomical Tide illustrates the highest flood level that is expected to occur during less frequent tides (less than once per year).



WATER ACCESS

How do you want to connect with the River?

Use the dots to indicate which projects best align with how you would like to access and connect with the water.



#5.1

FUTURE USE, PROGRAMMING, AND ACTIVATION

OVERVIEW

At this station we invite you to share how you currently use the Riverwalk and how often. We would also like to know what would bring you to the area more often.

CURRENT USE

The Riverwalk and Basin currently support a wide variety of uses, including large scale events, recreation, educational activities, eating and drinking, and other activities.

How often do you visit the Riverwalk?

Scan the QR code to tell us how often you currently visit the Riverwalk.



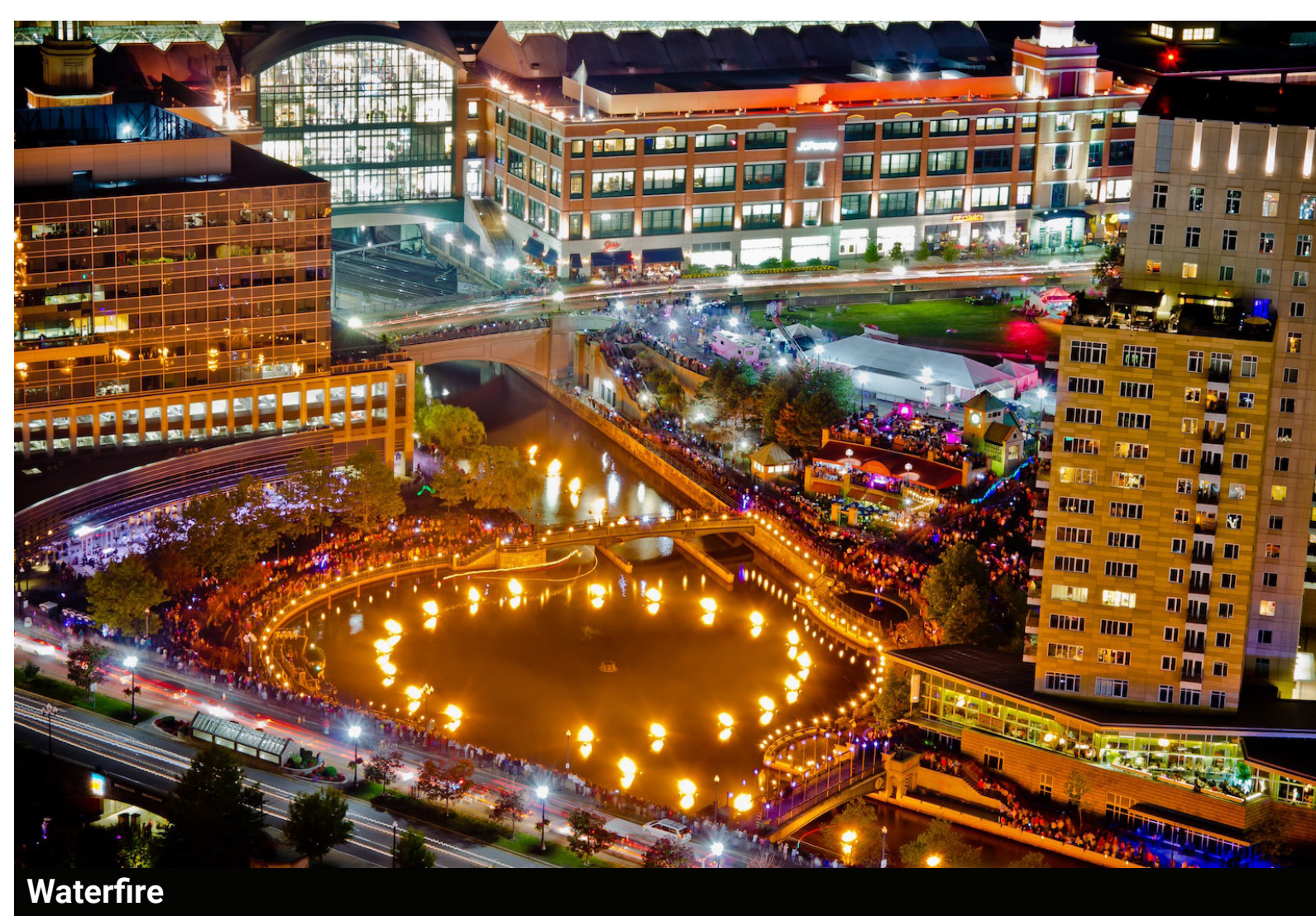
How do you usually arrive at the Riverwalk and where do you typically like to hang out?

On the 11x17 provided, use a marker to show us where you typically like to go or the path that you like to follow.



CURRENT PROGRAMS & SPECIAL EVENTS

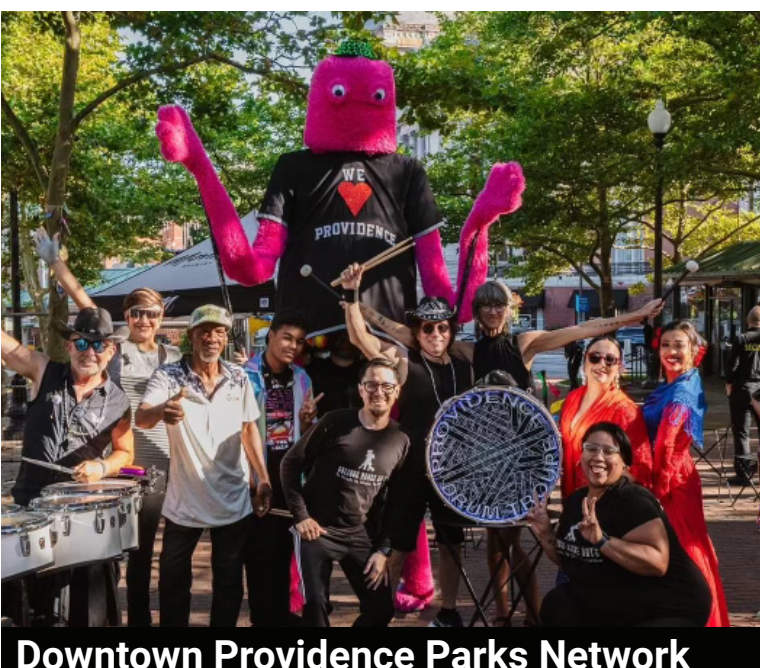
How can this project continue to support Waterfire and other special events that activate the Riverwalk?



Waterfire



WBRU Summer Concert



Downtown Providence Parks Network

DIRECTIONS:

Use a Sticky Note to share how you think this project can support Waterfire and other special events.



#5.2

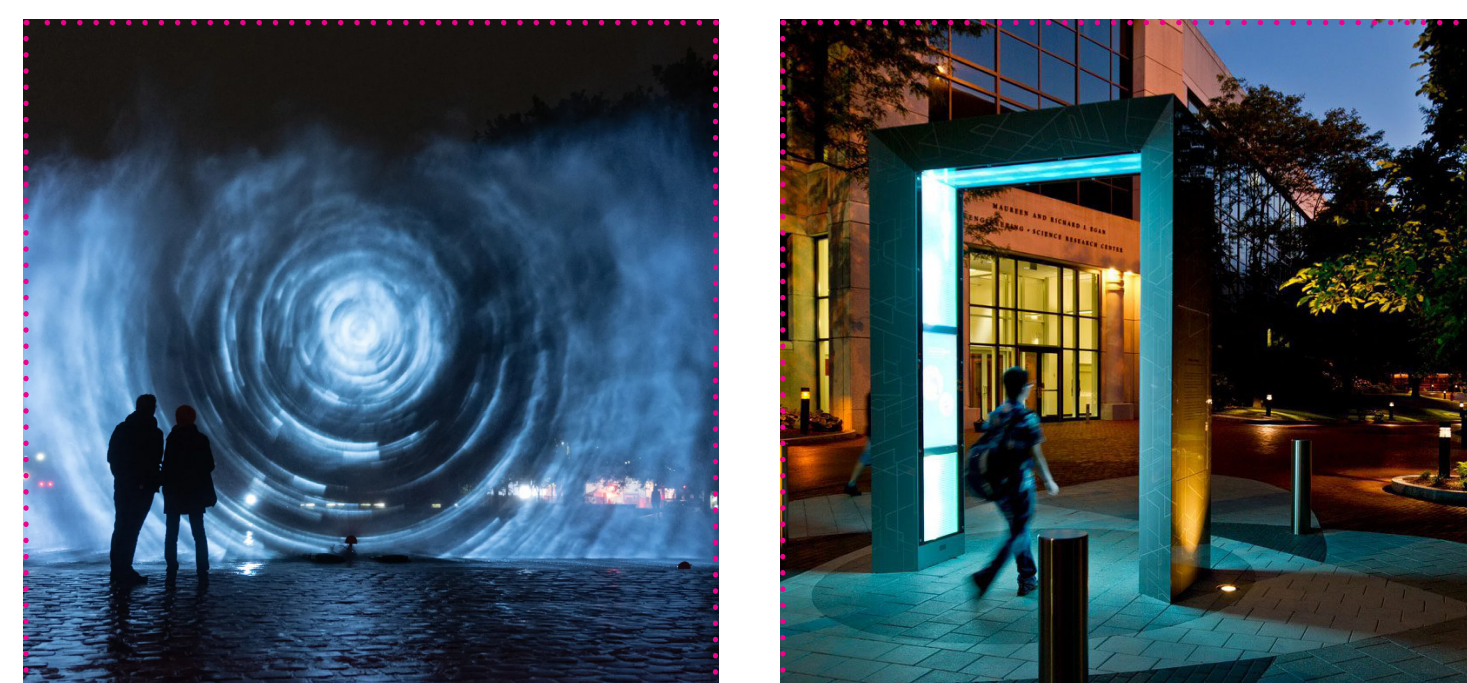
CURRENT USE, PROGRAMMING, AND ACTIVATION

What types of activities do you think the Riverwalk should support? What kind of art, events, or features would bring you back to the Riverwalk continuously?

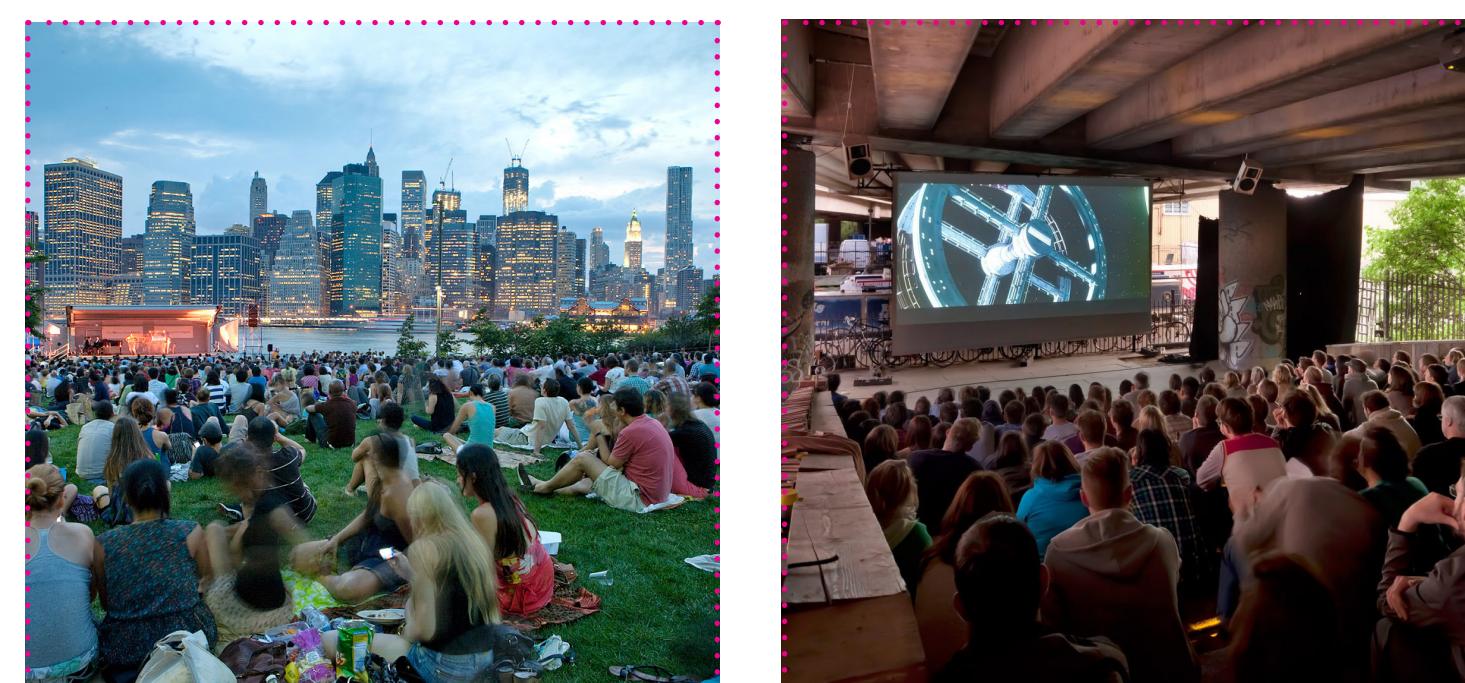
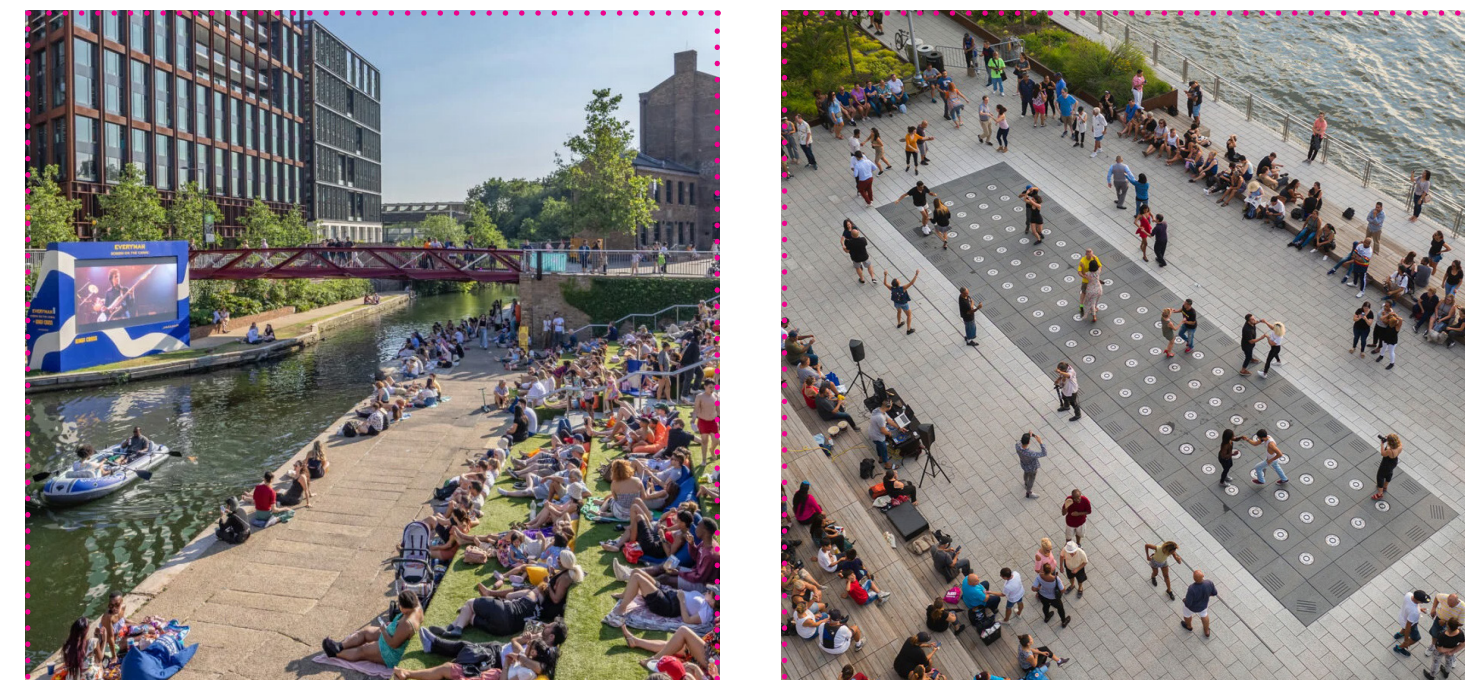
DIRECTIONS:

Use the dots to indicate which projects best represent what activities you would like to see at the Riverwalk. In particular, please indicate what events and experiences might bring you to the water more often.

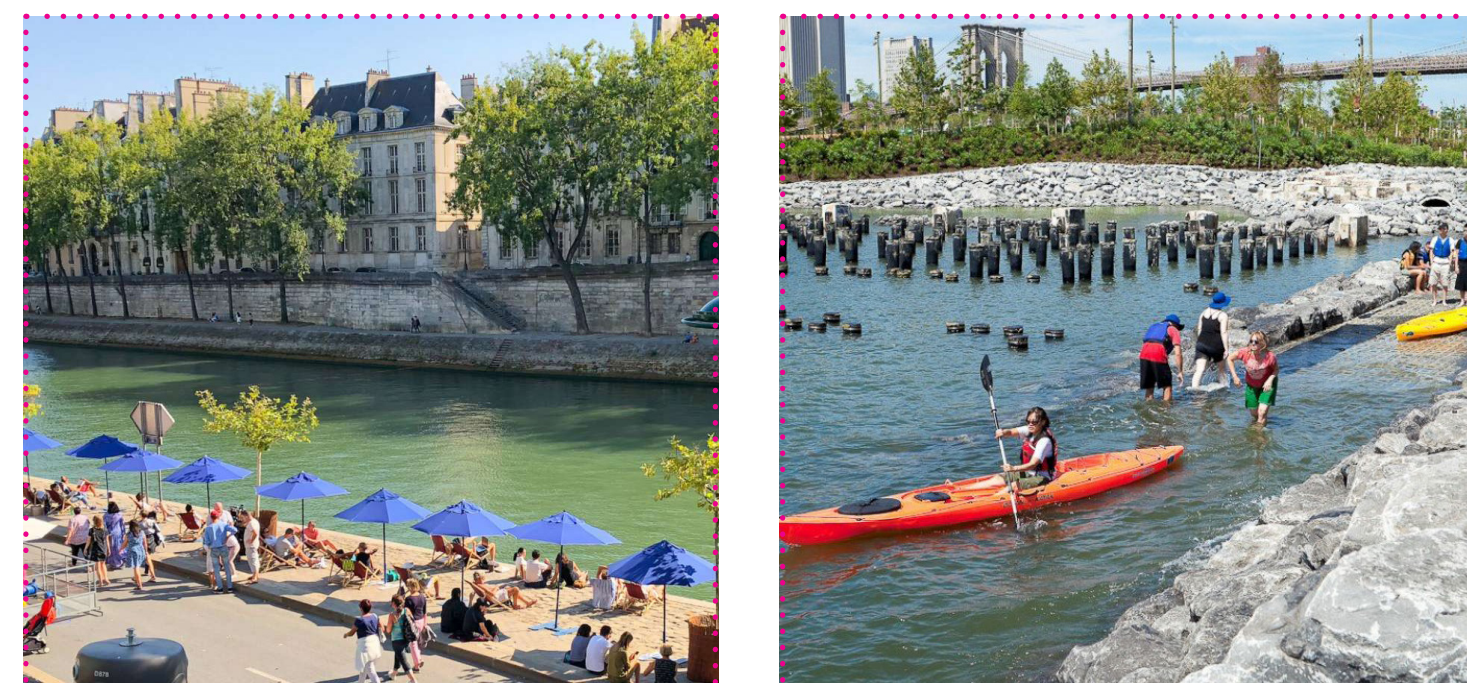
ART INSTALLATION / EXPERIENCES



CONCERTS / CULTURAL EVENTS



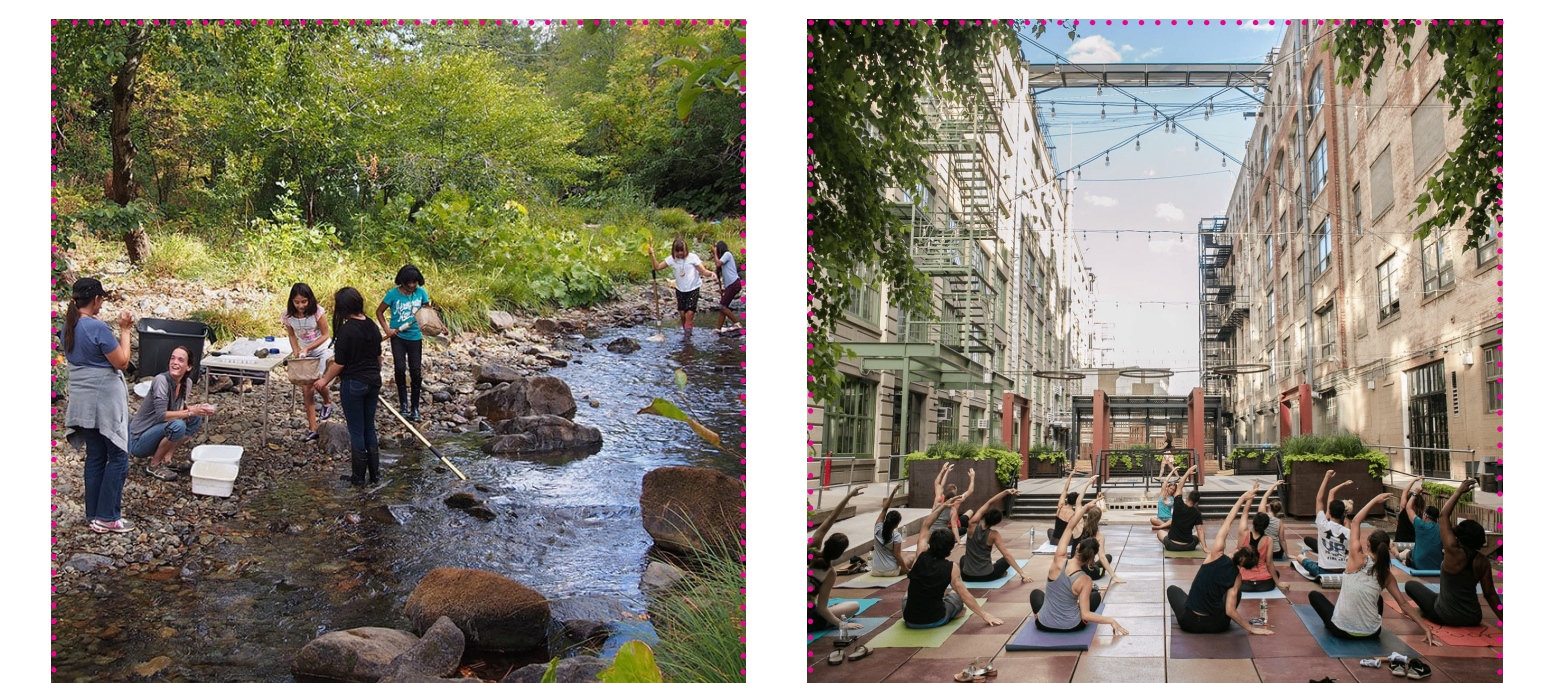
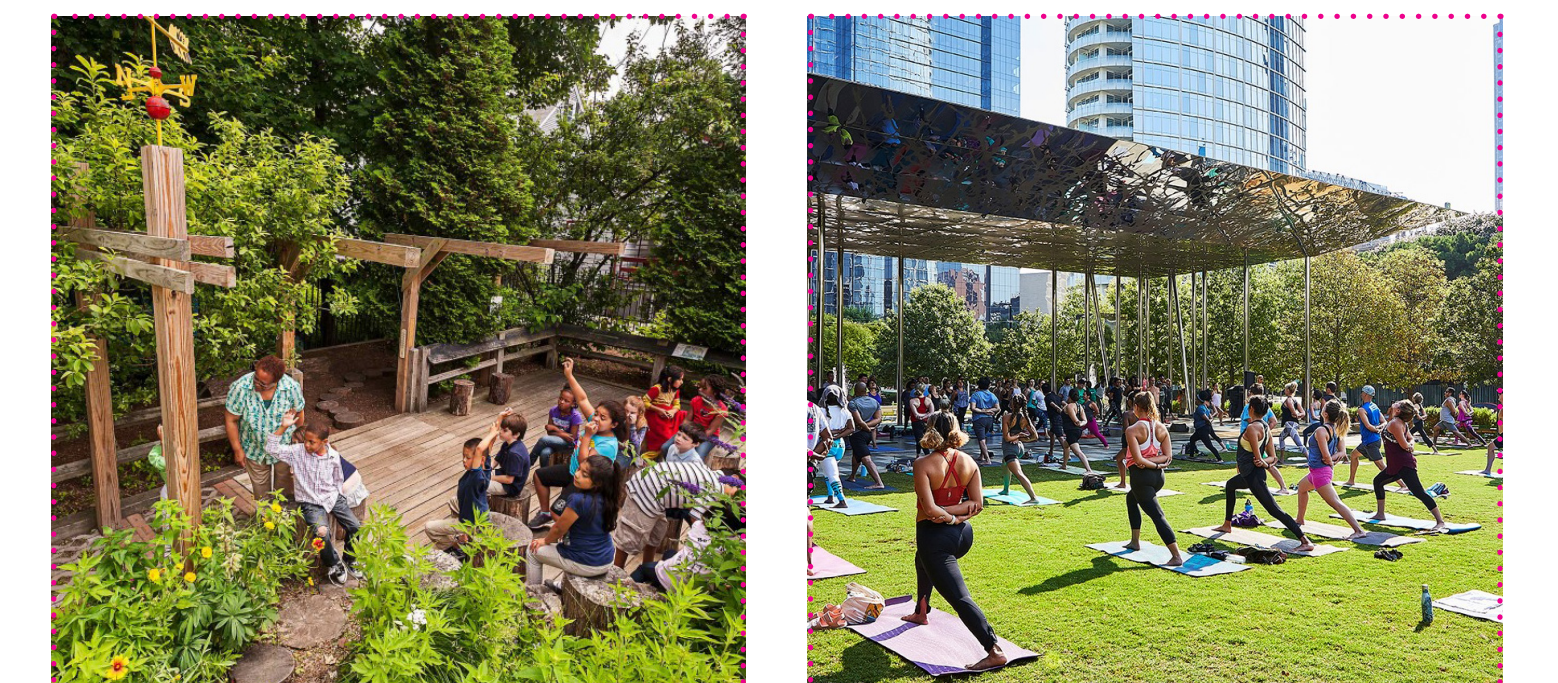
RECREATION / EXERCISE



FOOD / DINING



EDUCATIONAL / PARTICIPATORY



#6

NATURAL ENVIRONMENT AND URBAN ECOLOGY

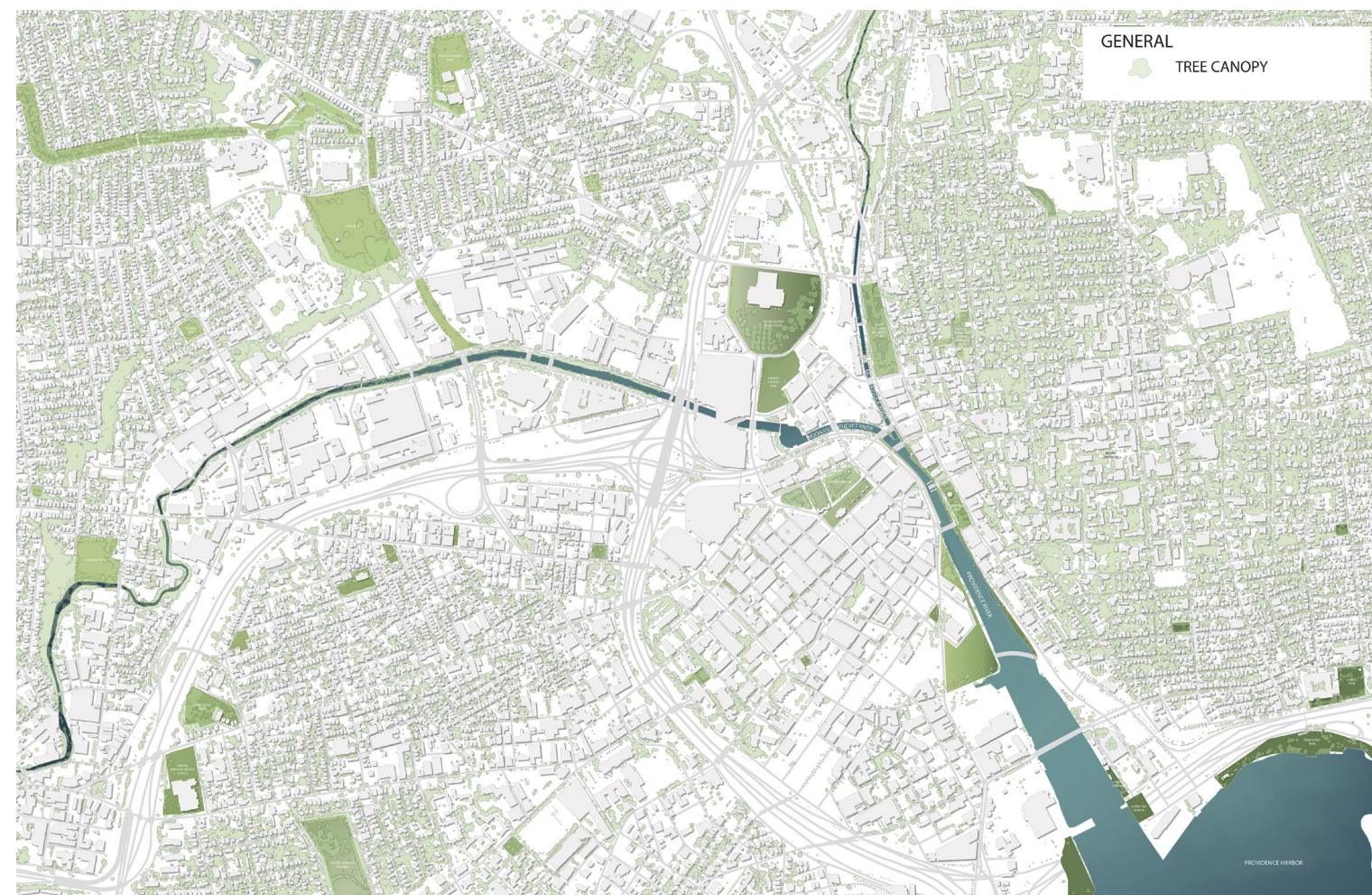
OVERVIEW

On this board we invite you to share your priorities for the ecology of the Riverwalk.

NATURE IN THE CITY

The Woonasquatucket River is an important ecological corridor and provides a habitat for a diverse mix of birds, mammals, fish and amphibians.

URBAN TREE CANOPY



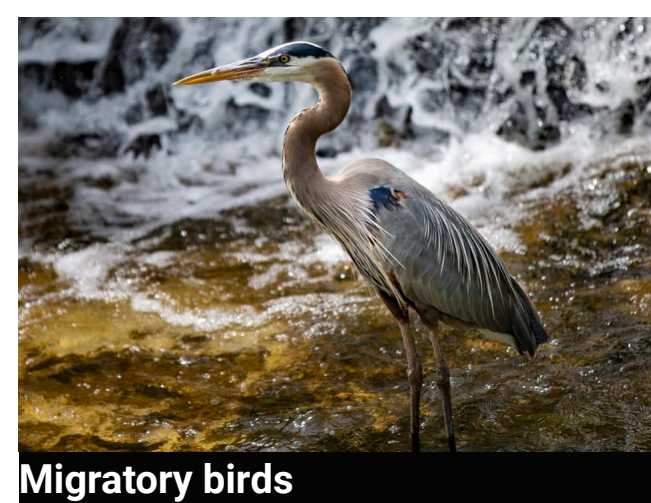
HABITATS AND VEGETATION



Trees/plants



Aquatic life: Stripers, scup, herring, etc.



Migratory birds



Pollinators

HABITAT SUPPORT STRATEGIES

What habitat support strategies do you think the project should integrate?

Use the dots provided to share what strategies the team should prioritize.



Environmental monitoring



Bee, bat, and bird houses



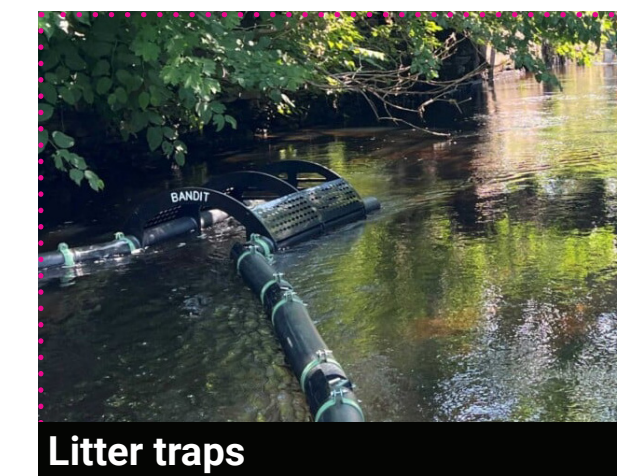
Inter-tidal habitat enrichment



Floating wetland



Log piles



Litter traps

ECOLOGICAL PRIORITIES

What are your priorities for the ecology of the Woonasquatucket River and the Riverwalk?

- Improve water quality
- Access to urban ecology education and activities
- Support and expand urban tree canopy
- Increase biodiversity through habitat creation
- Restore native riparian landscape
- Prioritize green infrastructure

Share your thoughts.

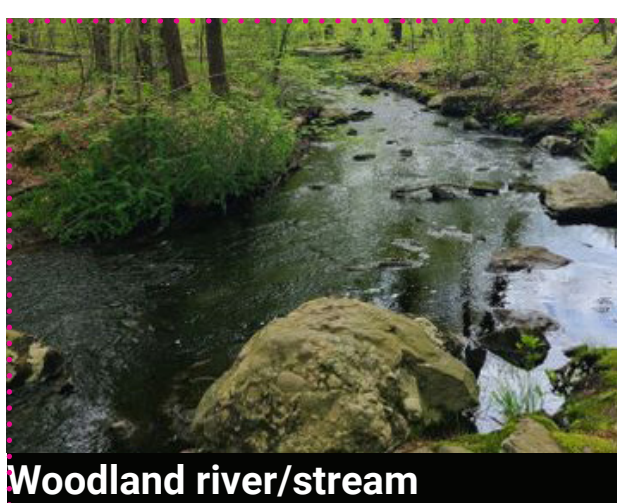
Scan the QR code to share your thoughts.



RIVER BANK

What types of natural habitat and vegetation would you like to see at the water's edge?

Use the dots to share your preferred environmental and ecological conditions at the water's edge.



Woodland river/stream



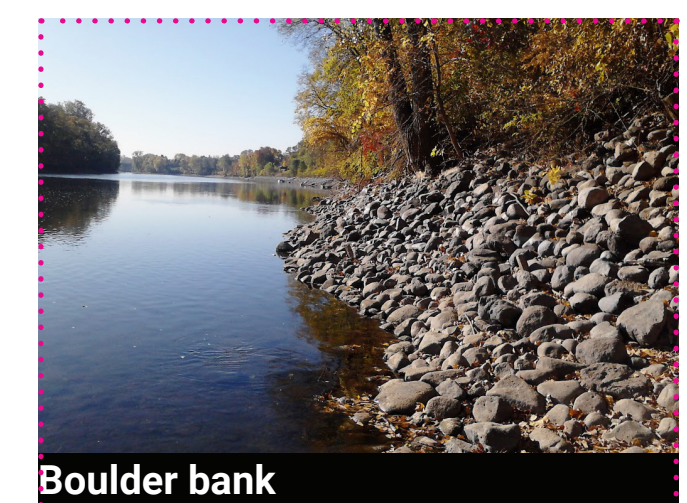
Wet meadow/fen



Tidal marsh



Rocky shore



Boulder bank

GENERAL

RAILROAD

BUS ROUTES

URBAN TRAIL NETWORK

EXISTING

