

Innovation District Garage | 75 Clifford Street, Providence, RI 02903 | Concept Development | August 8, 2024

---





Sign Type Key	
1	Round Parking Blade Sign
2	Rectangular Branded Blade Sign
3	Illuminated Logo
4	Vinyl Graphics
5	Car Coming
6	Pedestrian Warning (inside Garage)

**Innovation District Garage**


75 Clifford St.  
Providence, RI, 02903

Project: 23800  
Innovation District Garage

Sales: JF  
Date: 08.08.24  
Designer: SP

**Note:**  
This is an original unpublished drawing created by Poyant Signs, Inc. It is submitted for your personal use in connection with a project being planned for you by Poyant Signs, Inc. It is not to be shown to anyone outside your organization, nor is it to be reproduced, copied or exhibited in any fashion until transferred.

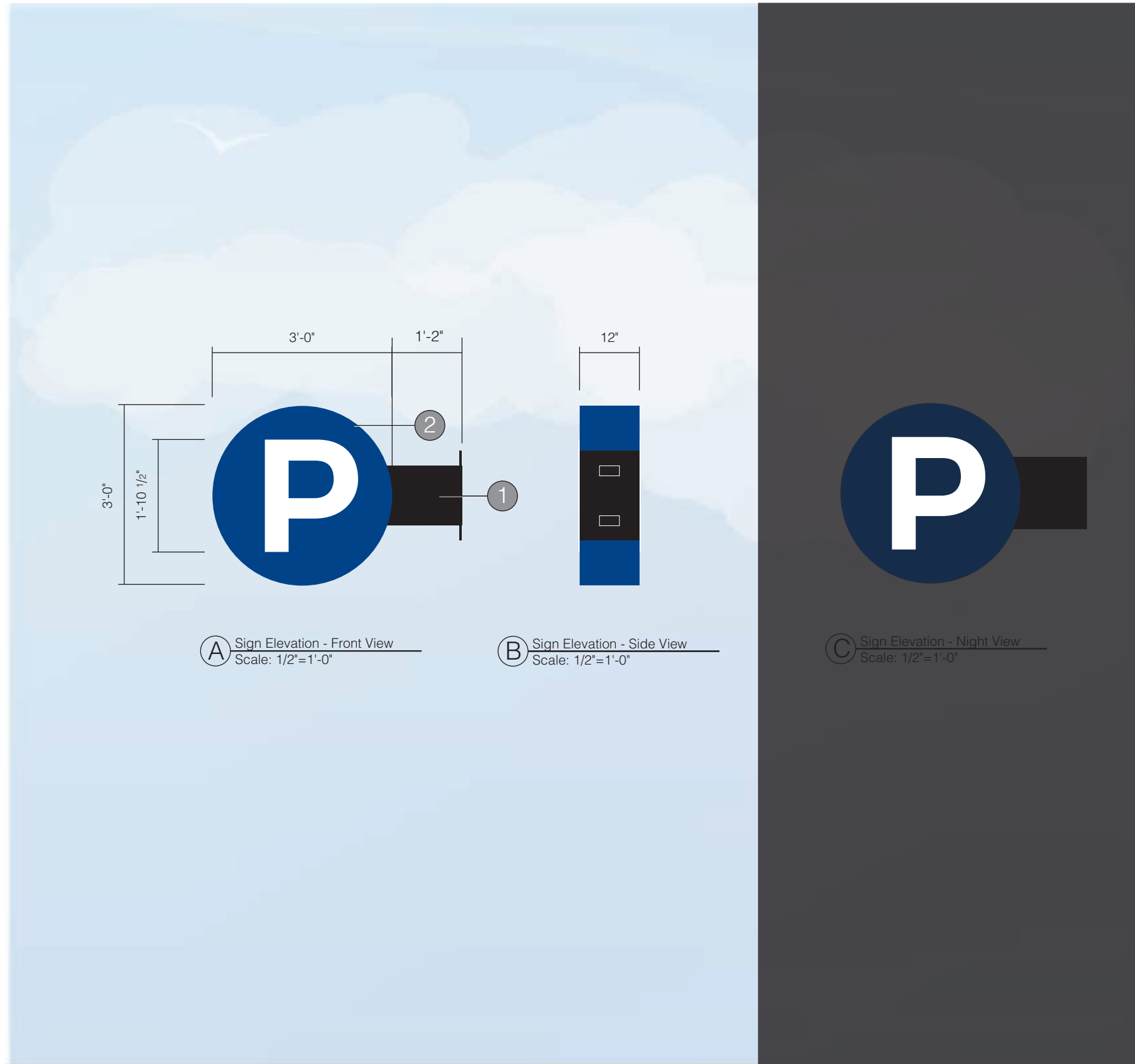
Revisions:


 This sign is intended to be installed in accordance with the requirements of Article 600 of the National Electrical Code and / or other applicable local codes. This includes proper grounding and bonding of the sign.

Approved By:

Date:





**A** Sign Elevation - Front View  
Scale: 1/2"=1'-0"

**B** Sign Elevation - Side View  
Scale: 1/2"=1'-0"

**C** Sign Elevation - Night View  
Scale: 1/2"=1'-0"

Specifications

Qty = 2

9 Sq. Ft

Internally Illuminated Blade Sign w/ Push-Thru Graphics

Cabinet

- Custom Built Round Cabinet with Push Thru Graphics
- Custom fabricated internal angle frame
- .090 AL sheet faces with router cut graphics
- 1/2" thick clear acrylic push-thru graphics
- Cabinet faces & returns to be painted Blue
- White GE LEDs mounted to interior perimeter of frame

Structure

- (Qty: 2) 4" x 2" x 1/8" Steel Tube Poles, clad with .090 AL sheet
- (Qty: 1) 18" x 12" x 1/4" Steel Mounting Plate
- (Qty: 4) Expansion anchor bolts, mounted directly to concrete
- Poles, cladding, & Mounting Plate to be painted Black

\*Engineering Required

\*Survey Required

- 120V Primary electrical brought to sign location
- Primary electrical connection by others

Colors & Materials

- 1** Paint  
Black; Satin Finish  
Poles & Covers
- 2** Paint  
Blue; Satin Finish - PMS 7687C  
Blade Cabinet
- 3** Illuminated Push Thru Graphics  
Clear Acrylic - Size TBD
- 4** Translucent Vinyl  
White; 3M 3630-02  
Push Thru Graphics  
First & Second Surface



125 Samuel Barnet Boulevard  
New Bedford, MA 02745  
800.544.0961 | poyantsigns.com

Innovation District Garage

75 Clifford St.  
Providence, RI, 02903

Project: 23800  
Innovation District Garage

Sales: JF  
Date: 08.08.24  
Designer: SP

**Note:**  
This is an original unpublished drawing created by Poyant Signs, Inc. It is submitted for your personal use in connection with a project being planned for you by Poyant Signs, Inc. It is not to be shown to anyone outside your organization, nor is it to be reproduced, copied or exhibited in any fashion until transferred.

Revisions:

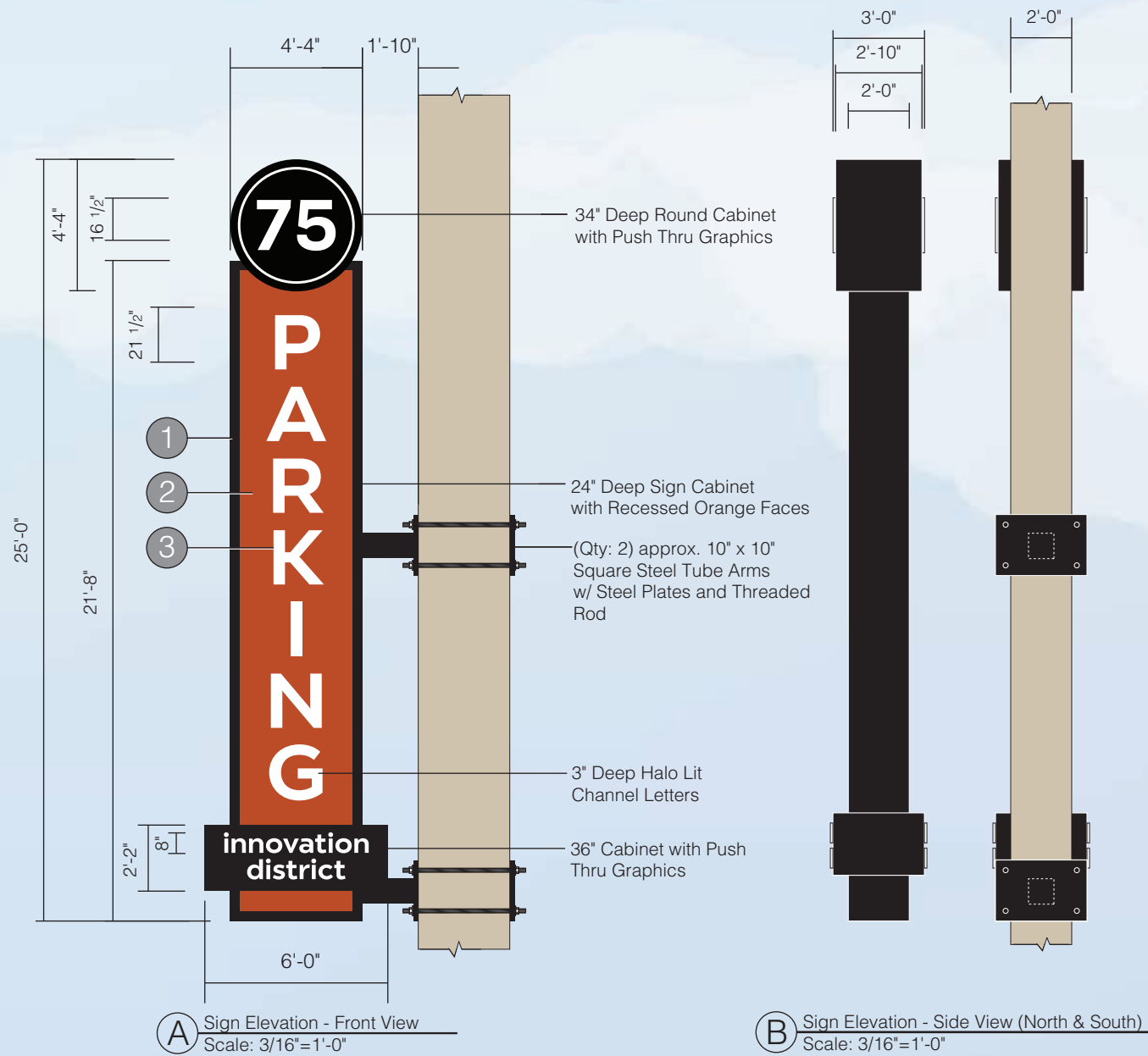



This sign is intended to be installed in accordance with the requirements of Article 600 of the National Electrical Code and / or other applicable local codes. This includes proper grounding and bonding of the sign.

Approved By:

Date:





Specifications

Qty = 3

150 Sq. Ft

Internally Illuminated Blade Sign w/ Halo Illuminated Channel Letters

Main Cabinet

- Custom fabricated Blade Sign Cabinet
- 2" x 2" x 3/16" AL angle frame
- 4" x 4" AL square tube moulding around faces
- .090" AL sheet faces, recessed between moulding tube
- .090" AL sheet cladding on sides, top, & bottom
- Halo-Illuminated Channel Letters w/ 3" Returns, 1 1/2" Standoffs

Top Cabinet

- Custom fabricated Round Cabinet with Push-Thru Graphics
- Custom fab internal angle frame
- .090 AL sheet faces with router cut graphics
- 3/4" thick clear acrylic push-thru graphics
- White GE LEDs

Bottom Cabinet

- Custom Built Cabinet with Push Thru Graphics
- Custom fab internal angle frame
- .090 AL sheet faces with router cut graphics
- 3/4" thick clear acrylic push-thru graphics

Structure

- (Qty: 2) approx. 10" x 10" x 3/16" Steel Tube Arms
- (Qty: 4) 1" Thick Steel Match Plates  
North & South Plates: 2'-0"H x 3'-0"W  
West Plate: 2'-0"H x 4'-0"W
- Secured to Building via Thru Bolting, Match Plates and Threaded Rod as required

- \*Engineering Required
- \*Survey Required

- 120V Primary electrical brought to sign location
- Primary electrical connection by others

Colors & Materials

- 1 Paint  
Black; Satin Finish  
Round Cabinet, Bottom Cabinet, Mask and Paint Blade Cabinet
- 2 Paint  
Orange; Satin Finish  
(To Match Existing Building Color - Paint Match TBD)  
Mask/Paint Blade Cabinet
- 3 Paint  
White; Satin Finish  
Halo Lit Channel Letters
- 4 Illuminated Push Thru Graphics  
Clear Acrylic - Size TBD
- 5 Translucent Vinyl  
White; 3M 3630-02  
Push Thru Graphics  
First & Second Surface



Innovation District Garage

75 Clifford St.  
Providence, RI, 02903

Project: 23800  
Innovation District Garage

Sales: JF  
Date: 08.08.24  
Designer: SP

Note:  
This is an original unpublished drawing created by Poyant Signs, Inc. It is submitted for your personal use in connection with a project being planned for you by Poyant Signs, Inc. It is not to be shown to anyone outside your organization, nor is it to be reproduced, copied or exhibited in any fashion until transferred.

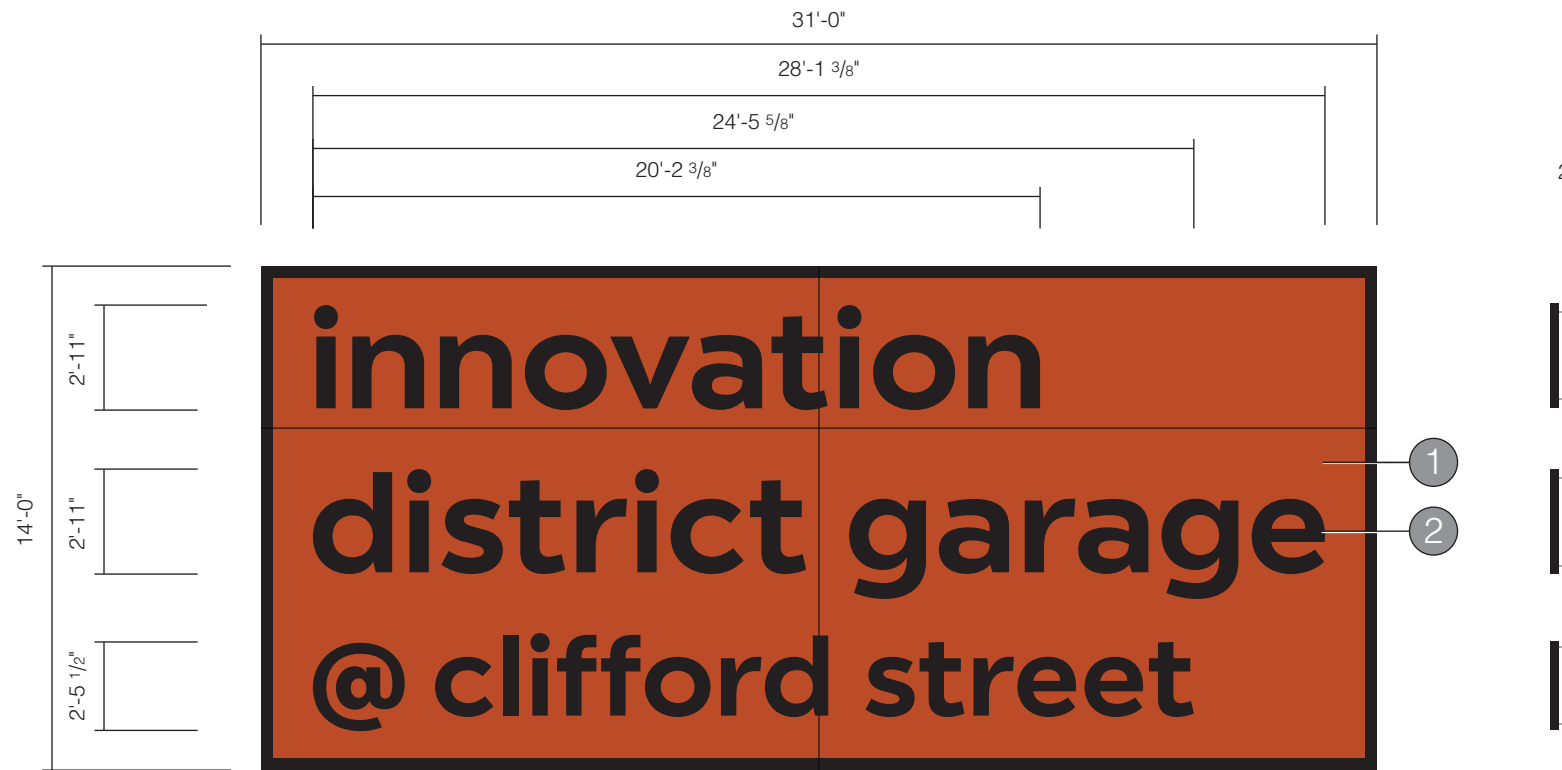
Revisions:




This sign is intended to be installed in accordance with the requirements of Article 600 of the National Electrical Code and / or other applicable local codes. This includes proper grounding and bonding of the sign.

Approved By:

Date:



**A** Sign Elevation - Front View  
Scale: 3/16"=1'-0"

**B** Sign Elevation - Side View  
Scale: 3/16"=1'-0"



**C** Sign Elevation - Night View  
Scale: 3/16"=1'-0"

Specifications

Qty = 1 434 Sq. Ft

Halo Illuminated Channel Letters on Backer

Channel Letters

- 3" Deep Halo Illuminated Channel Letters, painted Black
- 1 1/2" Spacers
- White GE LEDs

Backer Cabinet

- Custom Built Backer Cabinet in 4 sections, painted Orange (31'-0"W x 14'-0"H overall)
- 1 1/2" x 1 1/2" Steel Angle frames, mounted to building (Frame to existing 2 1/2" AL channel with Toggle Bolts, top & bottom)
- 2" x 2" AL Angle frames, mounted to Steel Angle frames
- .090" AL sheet cladding faces with painted seams

\*Engineering Required

\*Survey Required

- 120V Primary electrical brought to sign location
- Primary electrical connection by others

Colors & Materials

- 1** Paint  
Orange; Satin Finish  
(To Match Existing Building Color - Paint Match TBD)  
Backer cabinet
- 2** Paint  
Black; Satin Finish  
Channel Letters, border



125 Samuel Barnet Boulevard  
New Bedford, MA 02745  
800.544.0961 | poyantsigns.com

Innovation District Garage

75 Clifford St.  
Providence, RI, 02903

Project: 23800  
Innovation District Garage

Sales: JF  
Date: 08.08.24  
Designer: SP

**Note:**  
This is an original unpublished drawing created by Poyant Signs, Inc. It is submitted for your personal use in connection with a project being planned for you by Poyant Signs, Inc. It is not to be shown to anyone outside your organization, nor is it to be reproduced, copied or exhibited in any fashion until transferred.

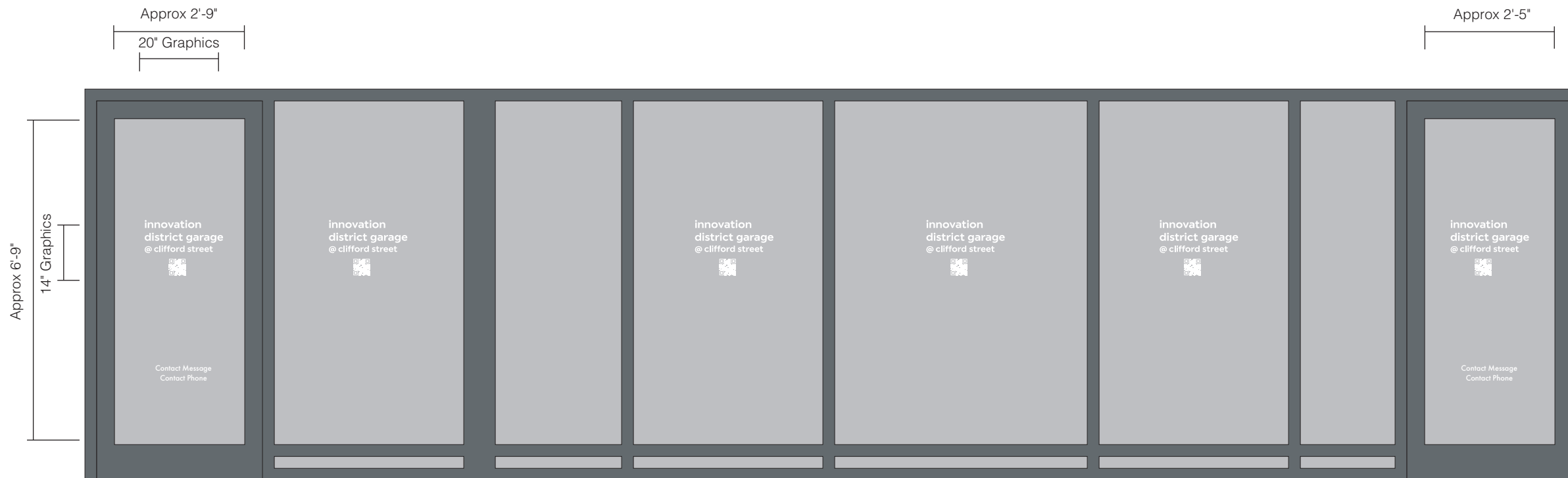
Revisions:

Rev	Description

This sign is intended to be installed in accordance with the requirements of Article 600 of the National Electrical Code and / or other applicable local codes. This includes proper grounding and bonding of the sign.

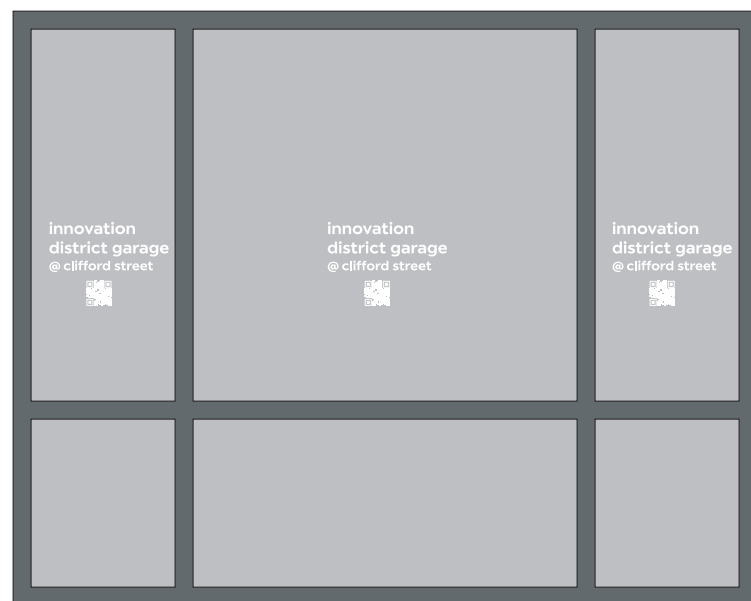
Approved By: \_\_\_\_\_

Date: \_\_\_\_\_



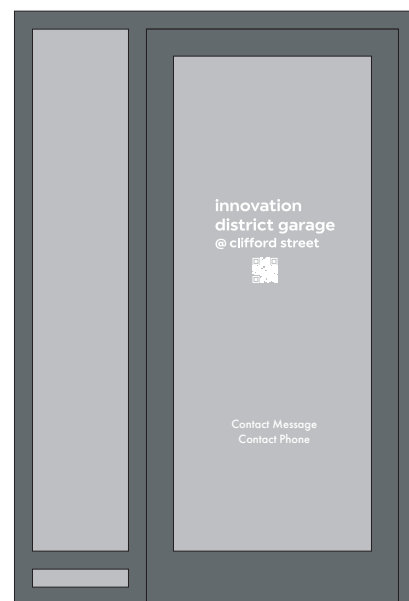
**A** Sign Elevation - North Elevation  
Scale: 3/8"=1'-0"

4A



**B** Sign Elevation - West Elevation  
Scale: 3/8"=1'-0"

4B



**C** Sign Elevation - West Elevation  
Scale: 3/8"=1'-0"

4C

Specifications

Qty = 13

1.94 Sq. Ft

Vinyl Graphics

Colors & Materials

- 1 Opaque Vinyl White Arlon 02 x

**Innovation District Garage**

75 Clifford St.  
Providence, RI, 02903

Project: 23800  
Innovation District Garage

Sales: JF  
Date: 08.08.24  
Designer: SP

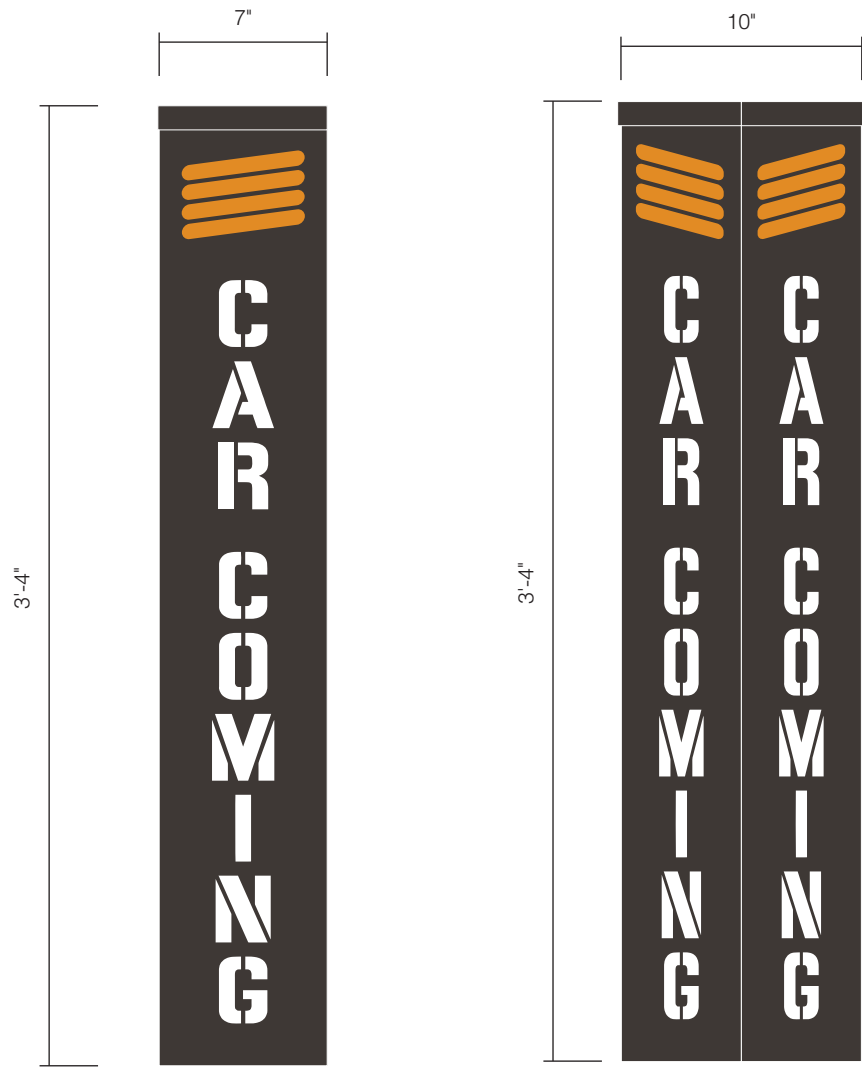
**Note:**  
This is an original unpublished drawing created by Poyant Signs, Inc. It is submitted for your personal use in connection with a project being planned for you by Poyant Signs, Inc. It is not to be shown to anyone outside your organization, nor is it to be reproduced, copied or exhibited in any fashion until transferred.

Revisions:


**UL**  
This sign is intended to be installed in accordance with the requirements of Article 600 of the National Electrical Code and / or other applicable local codes. This includes proper grounding and bonding of the sign.

Approved By:

Date:



**A** Sign Elevation - Right View  
Scale: 1 1/2"=1'-0"

**B** Sign Elevation - Front View  
Scale: 1 1/2"=1'-0"

**C** Sign Location - North Entrance  
Not to Scale



**Innovation District Garage**

75 Clifford St.  
Providence, RI, 02903

Project: 23800  
Innovation District Garage

Sales: JF  
Date: 08.08.24  
Designer: SP

**Note:**  
This is an original unpublished drawing created by Poyant Signs, Inc. It is submitted for your personal use in connection with a project being planned for you by Poyant Signs, Inc. It is not to be shown to anyone outside your organization, nor is it to be reproduced, copied or exhibited in any fashion until transferred.

**Revisions:**




This sign is intended to be installed in accordance with the requirements of Article 600 of the National Electrical Code and / or other applicable local codes. This includes proper grounding and bonding of the sign.

**Approved By:**

**Date:**

**Specifications**

Qty = 4 (Qty: 2 - North Entrance) 2.77 Sq. Ft  
(Qty: 2 - South Entrance)

- Car Coming Warning Sign**
- PAS-Kits - Wall Mount, 2 Sided
  - Hammered Copper Textured Power Coating
  - 2 inputs/ 4 outputs
  - Programmable
  - Flashing LEDs
  - Audio Module with Volume Control
  - Voice Speaker
  - Power Supply
  - Prewired Inside Sign

- Trigger Sensor**
- (Qty: 2 - 1 Per Locaton) Triggering Systems Inside Garage
  - Secured to Building via Fasteners As Required

\*Survey Required

- 120V Primary electrical brought to sign location
- Primary electrical connection by others

**Colors & Materials**

- 1** Car Coming Warning Sign  
(Qty: 4) 10" x 40"  
CC4010VW2-KIT-DL  
Hammered Copper Finish

- 2** Car Coming Trigger Sensor  
(Qty: 2) 18AWG/4C





**A** Sign Elevation - Front View  
Scale: 1 1/2"=1'-0"



**B** Sign Location - North Entrance  
Not to Scale

**Innovation District Garage**

75 Clifford St.  
Providence, RI, 02903

Project: 23800  
Innovation District Garage

Sales: JF  
Date: 08.08.24  
Designer: SP

**Note:**  
This is an original unpublished drawing created by Poyant Signs, Inc. It is submitted for your personal use in connection with a project being planned for you by Poyant Signs, Inc. It is not to be shown to anyone outside your organization, nor is it to be reproduced, copied or exhibited in any fashion until transferred.

**Revisions:**




This sign is intended to be installed in accordance with the requirements of Article 600 of the National Electrical Code and / or other applicable local codes. This includes proper grounding and bonding of the sign.

Approved By: \_\_\_\_\_

Date: \_\_\_\_\_

**Specifications**

Qty = 2 (Qty: 1 - North Entrance) 1.29 Sq. Ft  
(Qty: 1 - South Entrance)

**Pedestrian Coming Warning Sign**

- GO SLOW Pedestrian Crossing—24/7 Flashing
- Optional only flash on detection of pedestrian
- 11x17x4, Wall Mounted, Single Sided
- 18AWG Steel - Lexan window
- Textured black powder coating
- 120VAC 1A
- (Qty: 1 - per location) Directional Logic Motion Detector

**\*Survey Required**

- 120V Primary electrical brought to sign location
- Primary electrical connection by others

**Colors & Materials**

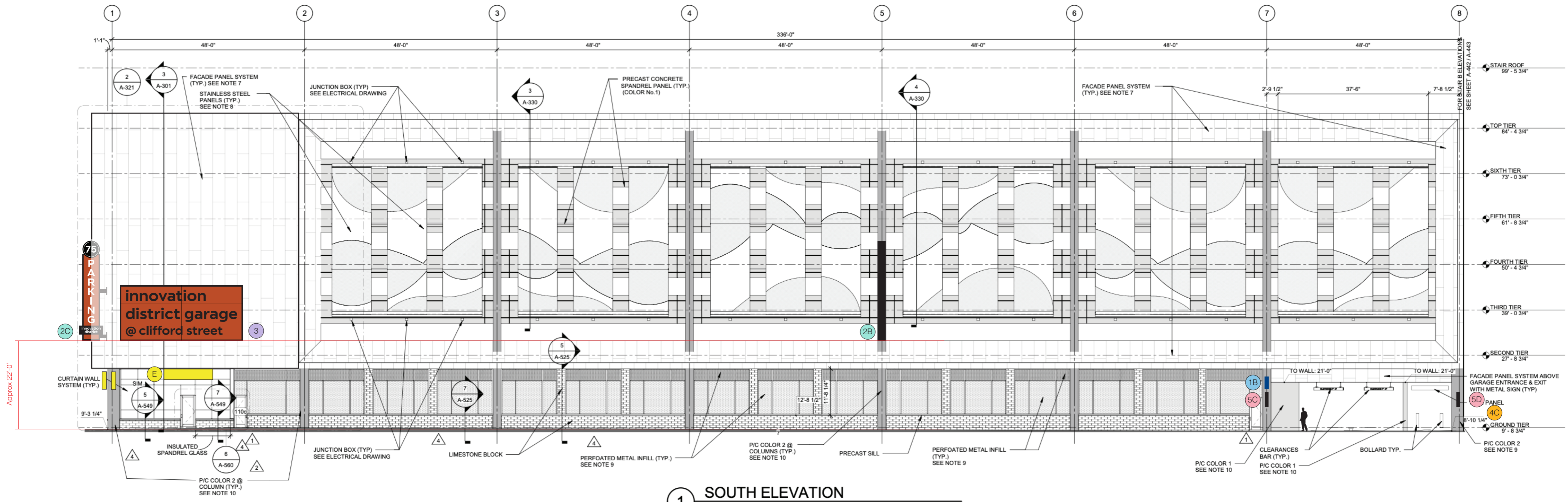


Pedestrian Crossing Warning Sign  
(Qty: 2) 11" x 17"  
GO SLOW Pedestrian Crossing—24/7 Flashing  
Black Coated Finish

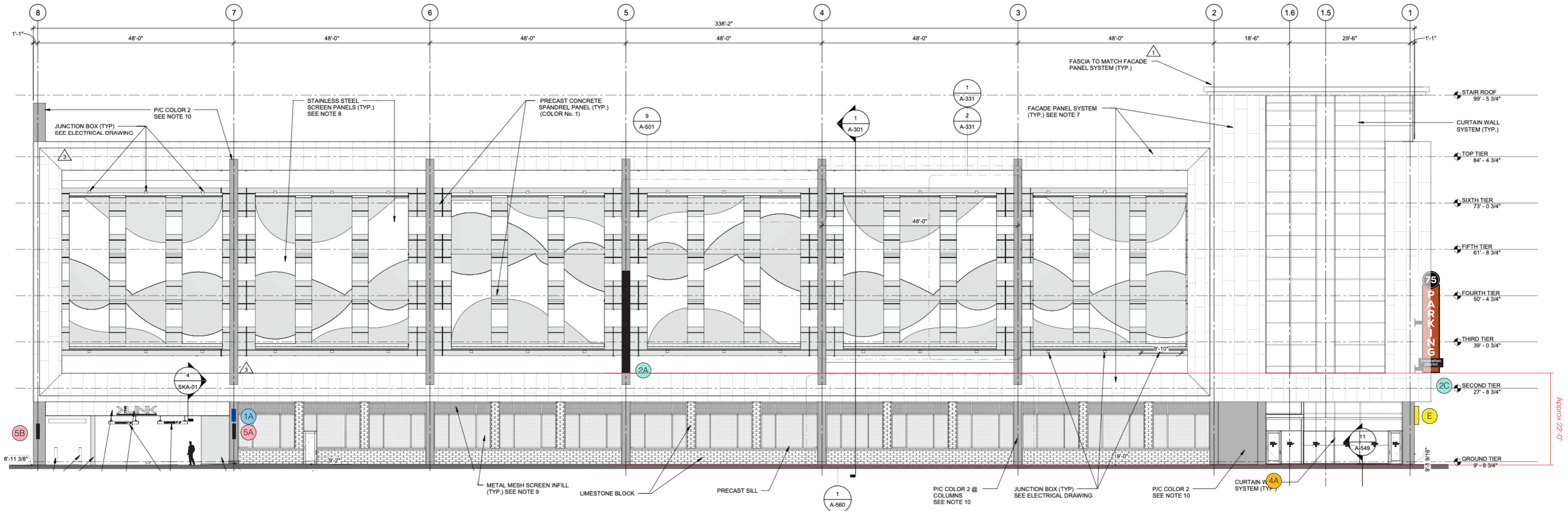


Directional Logic Motion Detector  
(Qty: 4)





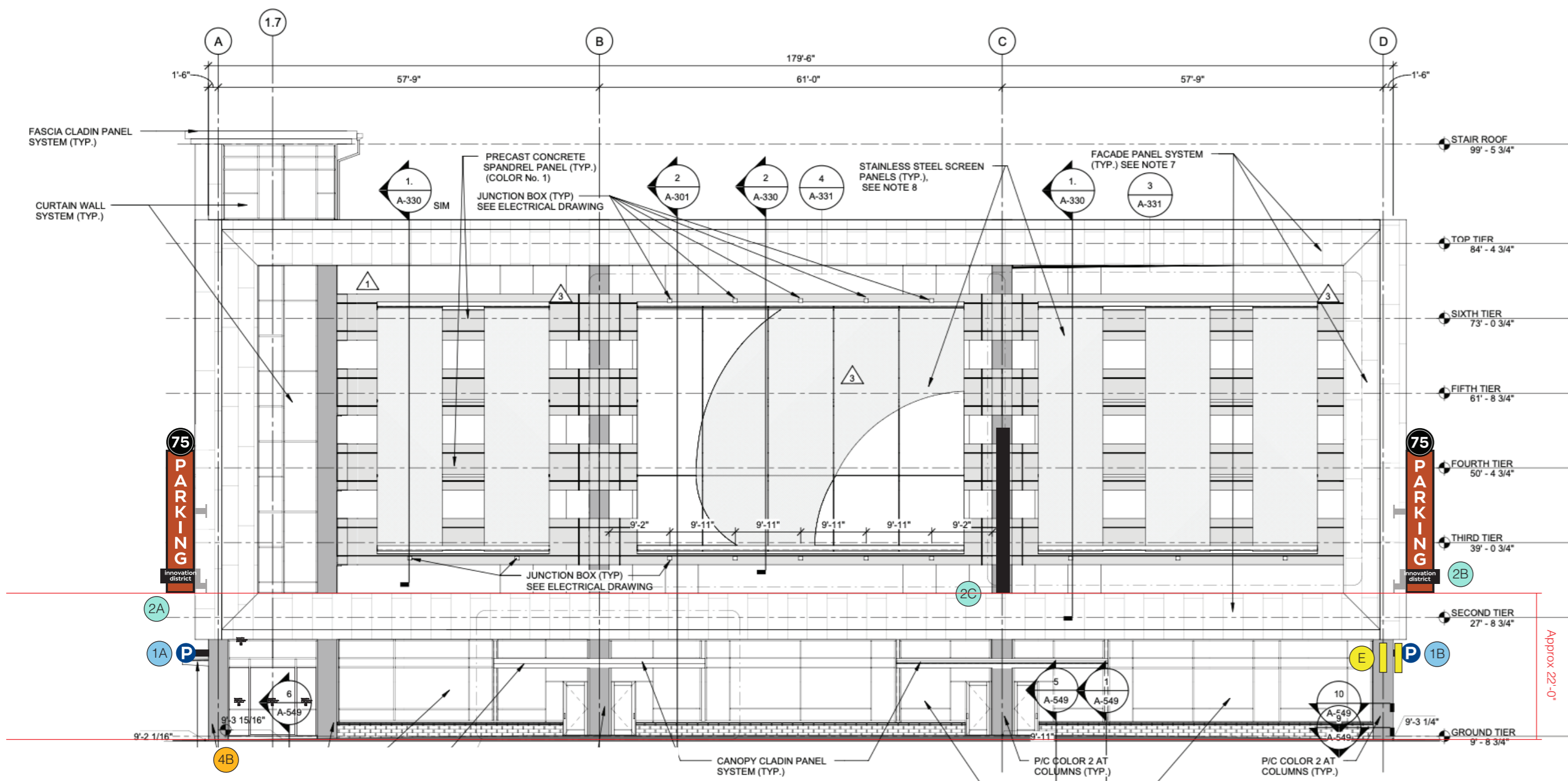




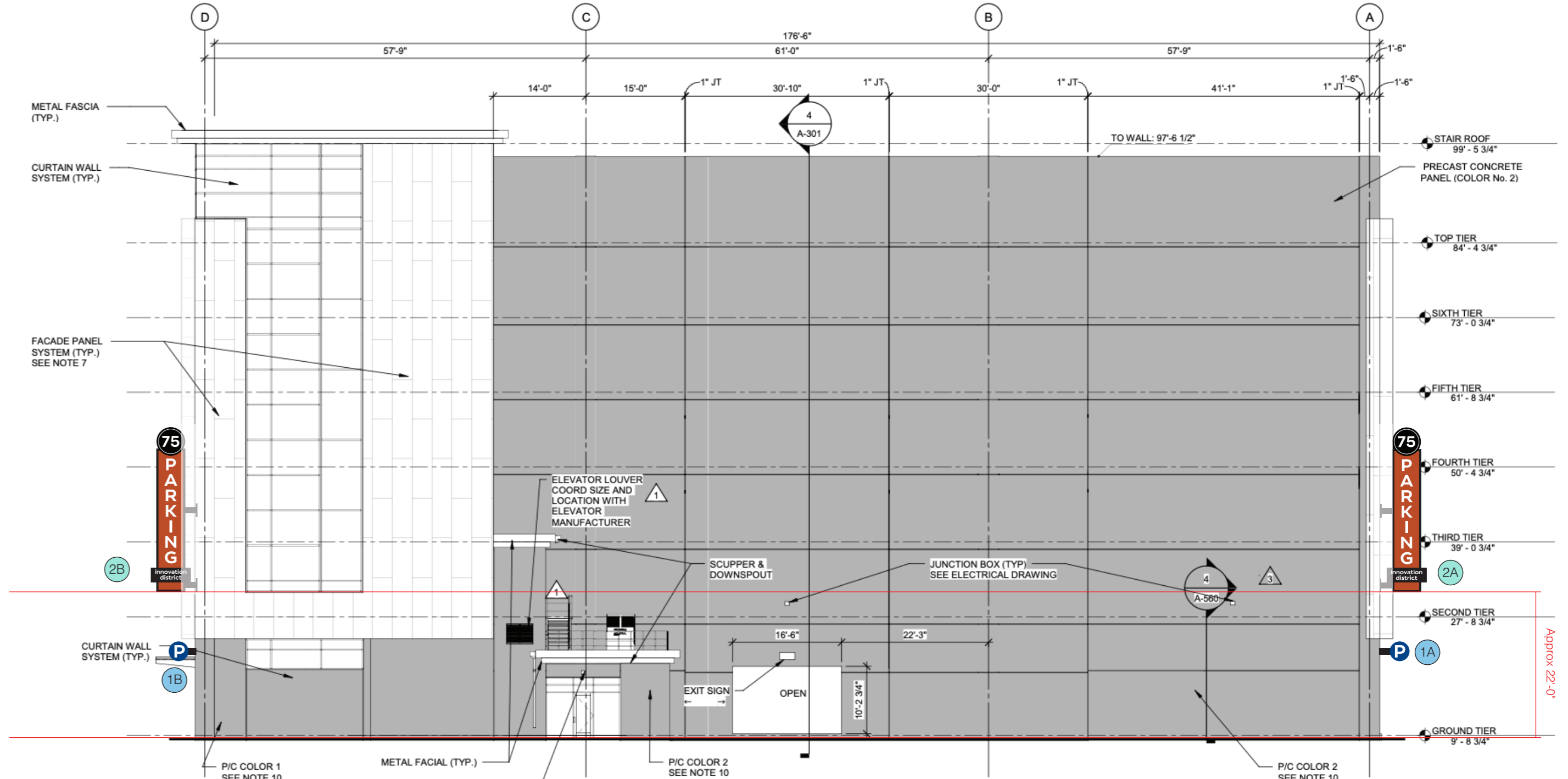
Sign Type Key	
1	Round Parking Blade Sign - 36" Diameter
2	Rectangular Branded Blade Sign - Approx 25'-0" H x 6'-0" W
3	Illuminated Logo - Approx OA 14'-0" H x 31'-0" W 1" Approx 34" H @ Approx 30" H
4	Vinyl Graphics
5	Car Coming
E	Existing

**1 NORTH ELEVATION**  
Scale: 1/16"=1'0"





**2 WEST ELEVATION**  
Scale: 1/16"=1'0"



**2 EAST ELEVATION**  
Scale: 1/16"=1'0"

Sign Type Key	
1	Round Parking Blade Sign - 36" Diameter
2	Rectangular Branded Blade Sign - Approx 25'-0" H x 6'-0" W
3	Illuminated Logo - Approx OA 15'-0" H x 33'-4" W 1" Approx 34" H @ Approx 30" H
4	Vinyl Graphics
E	Existing



**Innovation District Garage**

75 Clifford St.  
Providence, RI, 02903

Project: 23800  
Innovation District Garage

Sales: JF  
Date: 08.08.24  
Designer: SP

**Note:**  
This is an original unpublished drawing created by Poyant Signs, Inc. It is submitted for your personal use in connection with a project being planned for you by Poyant Signs, Inc. It is not to be shown to anyone outside your organization, nor is it to be reproduced, copied or exhibited in any fashion until transferred.

Revisions:




This sign is intended to be installed in accordance with the requirements of Article 600 of the National Electrical Code and / or other applicable local codes. This includes proper grounding and bonding of the sign.

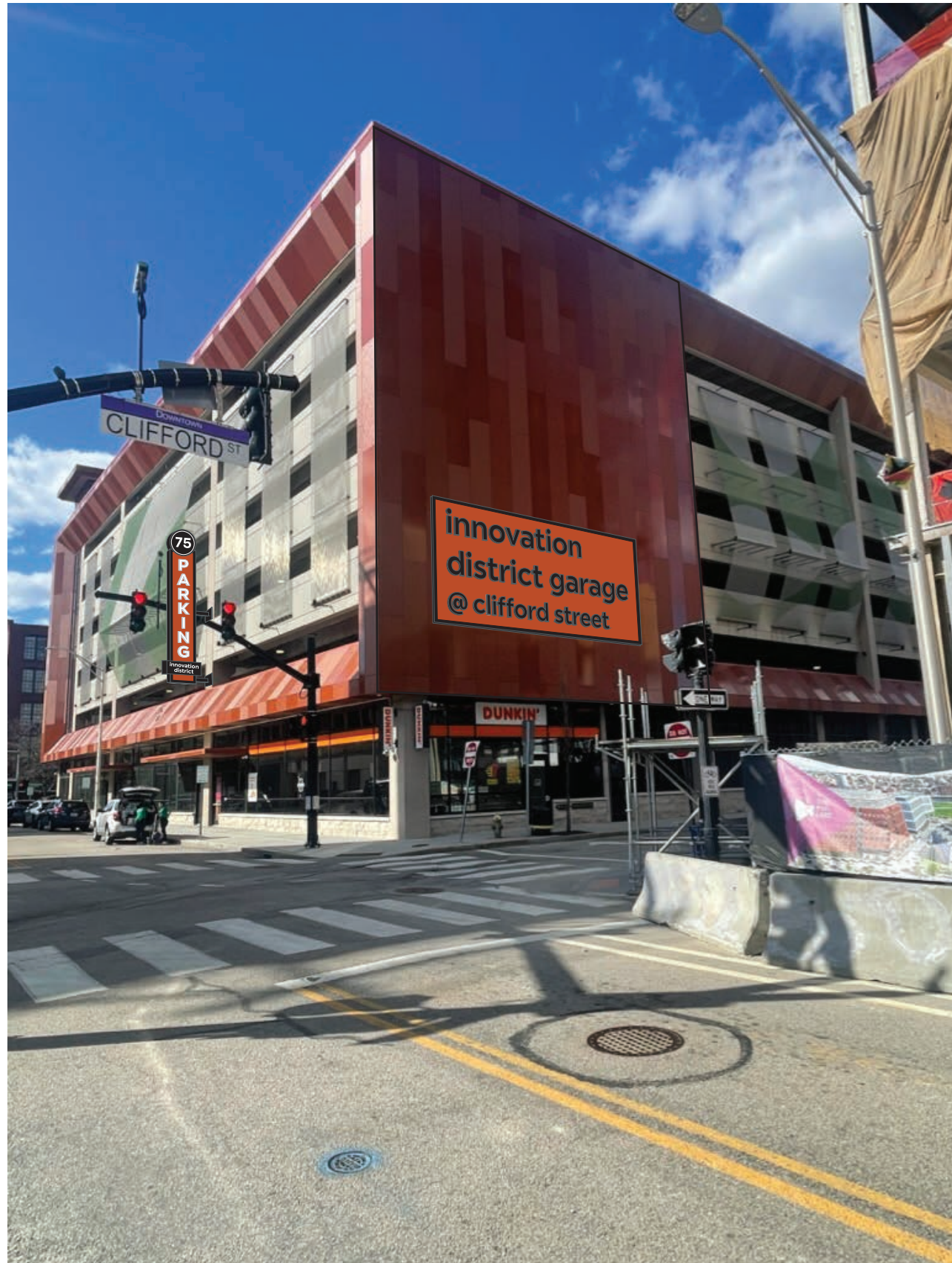
Approved By:

Date:



**A** Photo Comp - Proposed (Southwest Corner)  
Not to Scale





A Photo Comp - Proposed (Southwest Corner)  
Not to Scale

**Innovation District Garage**


75 Clifford St.  
Providence, RI, 02903

Project: 23800  
Innovation District Garage

Sales: JF  
Date: 08.08.24  
Designer: SP

Note:  
This is an original unpublished drawing created by Poyant Signs, Inc. It is submitted for your personal use in connection with a project being planned for you by Poyant Signs, Inc. It is not to be shown to anyone outside your organization, nor is it to be reproduced, copied or exhibited in any fashion until transferred.

Revisions:


 This sign is intended to be installed in accordance with the requirements of Article 600 of the National Electrical Code and / or other applicable local codes. This includes proper grounding and bonding of the sign.

Approved By:

Date:



**Innovation District Garage**

75 Clifford St.  
Providence, RI, 02903

Project: 23800  
Innovation District Garage

Sales: JF  
Date: 08.08.24  
Designer: SP

**Note:**  
This is an original unpublished drawing created by Poyant Signs, Inc. It is submitted for your personal use in connection with a project being planned for you by Poyant Signs, Inc. It is not to be shown to anyone outside your organization, nor is it to be reproduced, copied or exhibited in any fashion until transferred.

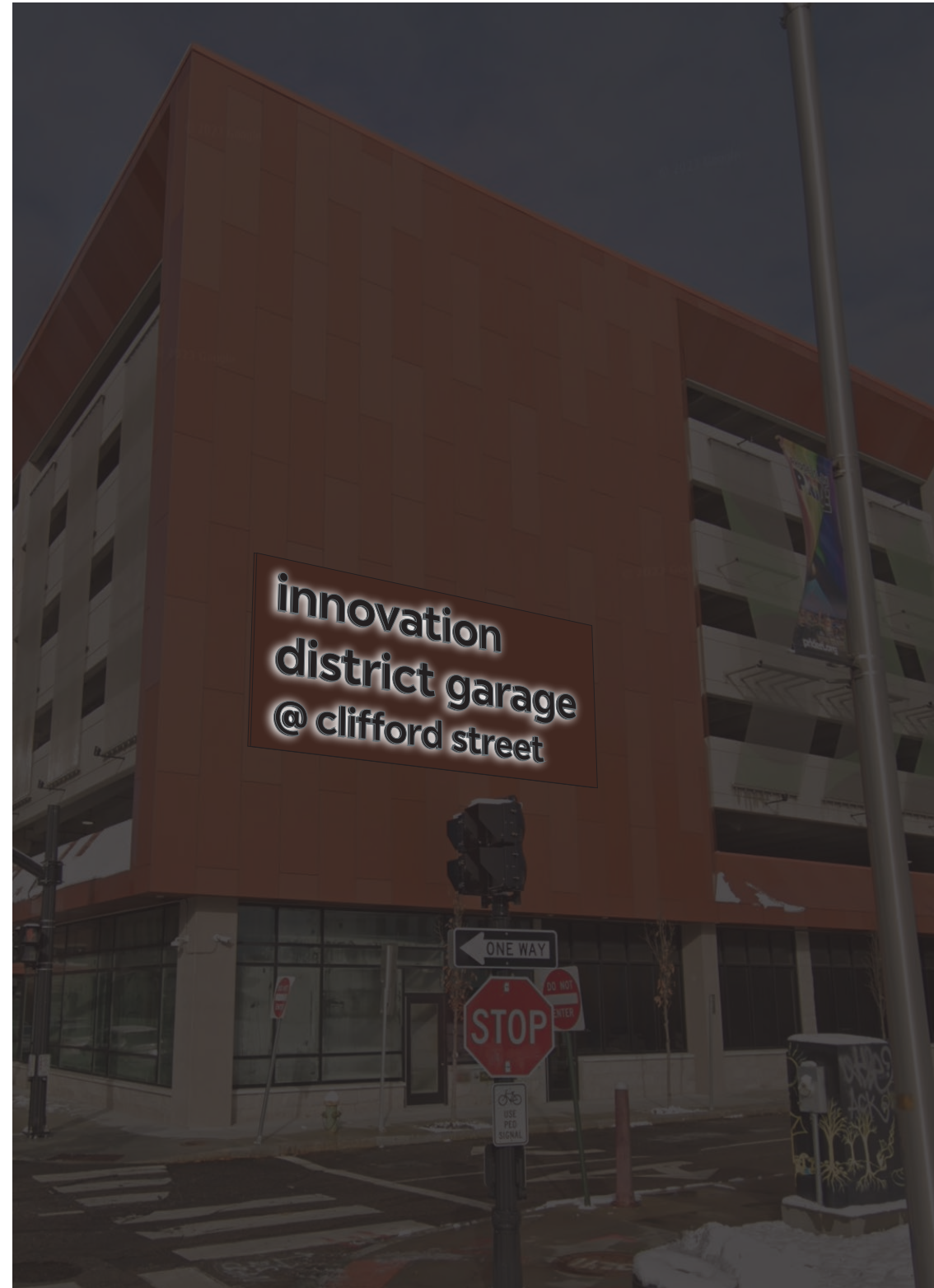
Revisions:




This sign is intended to be installed in accordance with the requirements of Article 600 of the National Electrical Code and / or other applicable local codes. This includes proper grounding and bonding of the sign.

Approved By:

Date:



**A** Photo Comp - Proposed (South Face)  
Not to Scale





Innovation District Garage

75 Clifford St.  
Providence, RI, 02903

Project: 23800  
Innovation District Garage

Sales: JF  
Date: 08.08.24  
Designer: SP

Note:  
This is an original unpublished drawing created by Poyant Signs, Inc. It is submitted for your personal use in connection with a project being planned for you by Poyant Signs, Inc. It is not to be shown to anyone outside your organization, nor is it to be reproduced, copied or exhibited in any fashion until transferred.

Revisions:

\_\_\_\_\_

\_\_\_\_\_

\_\_\_\_\_

\_\_\_\_\_

\_\_\_\_\_

\_\_\_\_\_



This sign is intended to be installed in accordance with the requirements of Article 600 of the National Electrical Code and / or other applicable local codes. This includes proper grounding and bonding of the sign.

Approved By:

Date:

**A** Photo Comp - Proposed (Northwest Corner)  
Not to Scale



A Photo Comp - Proposed (West Face)  
Not to Scale

Innovation District Garage


75 Clifford St.  
Providence, RI, 02903

Project: 23800  
Innovation District Garage

Sales: JF  
Date: 08.08.24  
Designer: SP

**Note:**  
This is an original unpublished drawing created by Poyant Signs, Inc. It is submitted for your personal use in connection with a project being planned for you by Poyant Signs, Inc. It is not to be shown to anyone outside your organization, nor is it to be reproduced, copied or exhibited in any fashion until transferred.

Revisions:


 This sign is intended to be installed in accordance with the requirements of Article 600 of the National Electrical Code and / or other applicable local codes. This includes proper grounding and bonding of the sign.

Approved By:

Date:



**Innovation District Garage**

75 Clifford St.  
Providence, RI, 02903

Project: 23800  
Innovation District Garage

Sales: JF  
Date: 08.08.24  
Designer: SP

**Note:**  
This is an original unpublished drawing created by Poyant Signs, Inc. It is submitted for your personal use in connection with a project being planned for you by Poyant Signs, Inc. It is not to be shown to anyone outside your organization, nor is it to be reproduced, copied or exhibited in any fashion until transferred.

**Revisions:**




This sign is intended to be installed in accordance with the requirements of Article 600 of the National Electrical Code and / or other applicable local codes. This includes proper grounding and bonding of the sign.

Approved By: \_\_\_\_\_

Date: \_\_\_\_\_

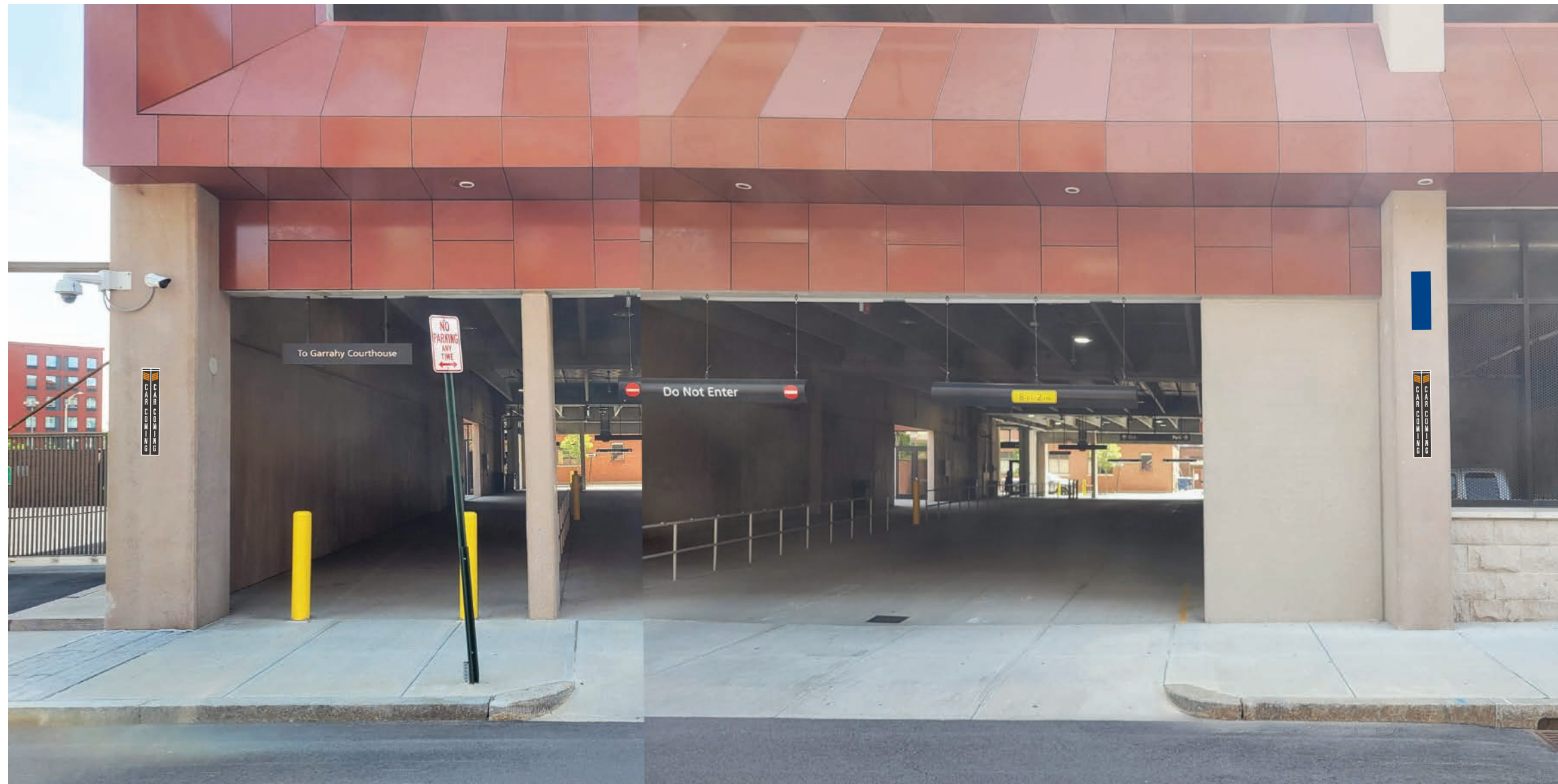


**A** Photo Comp - Proposed (Northwest Corner)  
Not to Scale



**C** Photo Comp - Proposed (Southeast Corner)  
Not to Scale





A Photo Comp - Proposed (Northeast Corner)  
Not to Scale



**Innovation District Garage**


75 Clifford St.  
Providence, RI, 02903

Project: 23800  
Innovation District Garage

Sales: JF  
Date: 08.08.24  
Designer: SP

**Note:**  
This is an original unpublished drawing created by Poyant Signs, Inc. It is submitted for your personal use in connection with a project being planned for you by Poyant Signs, Inc. It is not to be shown to anyone outside your organization, nor is it to be reproduced, copied or exhibited in any fashion until transferred.

Revisions:


 This sign is intended to be installed in accordance with the requirements of Article 600 of the National Electrical Code and / or other applicable local codes. This includes proper grounding and bonding of the sign.

Approved By:

Date:





A Photo Comp - Proposed (Southeast Corner)  
Not to Scale



Innovation District Garage


75 Clifford St.  
Providence, RI, 02903

Project: 23800  
Innovation District Garage

Sales: JF  
Date: 08.08.24  
Designer: SP

Note:  
This is an original unpublished drawing created by Poyant Signs, Inc. It is submitted for your personal use in connection with a project being planned for you by Poyant Signs, Inc. It is not to be shown to anyone outside your organization, nor is it to be reproduced, copied or exhibited in any fashion until transferred.

Revisions:


 This sign is intended to be installed in accordance with the requirements of Article 600 of the National Electrical Code and / or other applicable local codes. This includes proper grounding and bonding of the sign.

Approved By:

Date:





**Innovation District Garage**


75 Clifford St.  
Providence, RI, 02903

Project: 23800  
Innovation District Garage

Sales: JF  
Date: 08.08.24  
Designer: SP

**Note:**  
This is an original unpublished drawing created by Poyant Signs, Inc. It is submitted for your personal use in connection with a project being planned for you by Poyant Signs, Inc. It is not to be shown to anyone outside your organization, nor is it to be reproduced, copied or exhibited in any fashion until transferred.

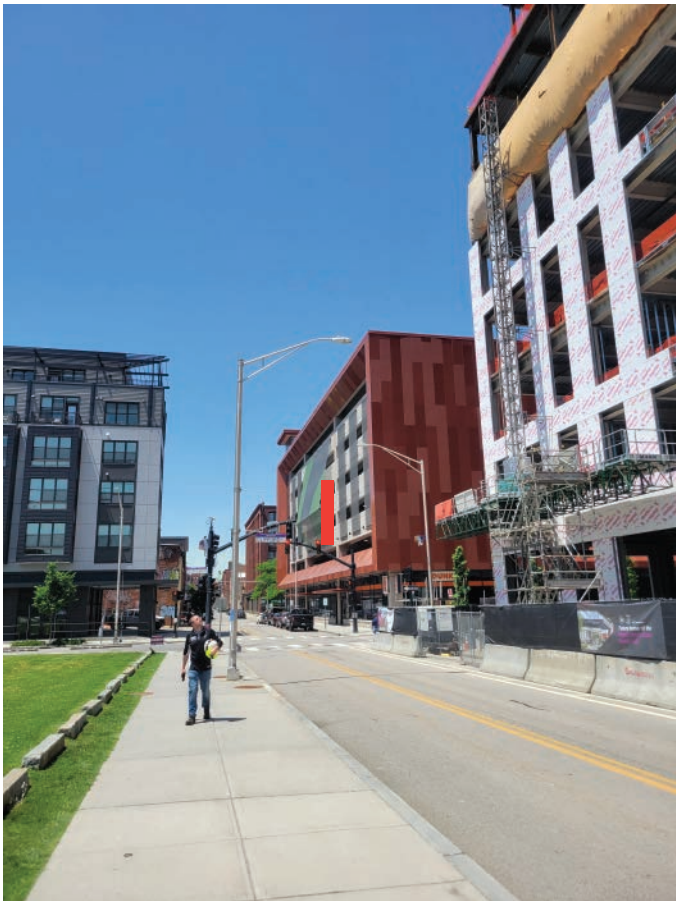
**Revisions:**


 This sign is intended to be installed in accordance with the requirements of Article 600 of the National Electrical Code and / or other applicable local codes. This includes proper grounding and bonding of the sign.

Approved By: \_\_\_\_\_

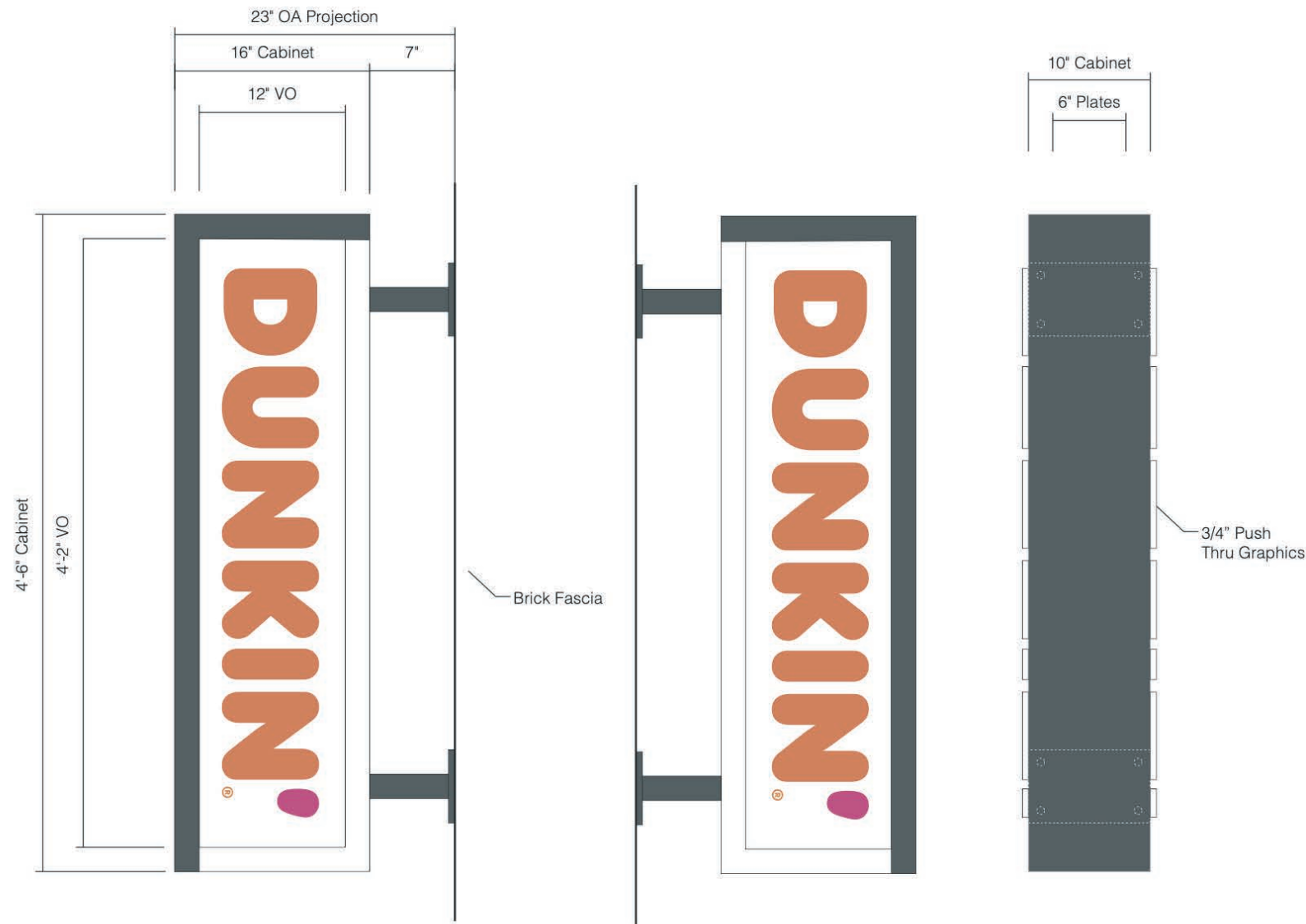
Date: \_\_\_\_\_







Existing Tenant Sign  
 (Qty: 2)  
 6 Sq Ft each, 12 Sq Ft total



**A** Sign Elevation - Side A  
 Scale: 1"=1'-0"

**A** Sign Elevation - Side B  
 Scale: 1"=1'-0"

**B** Sign Elevation - Side View  
 Scale: 1"=1'-0"

**Specifications**

Qty = 2 6 Sq Ft

Double Sided Internally Illuminated Blade Sign

\*Existing Cameras to be Removed and Relocated Prior to Install

- 10" Deep Extruded Aluminum Frame
- 2" retainer to be masked and painted PMS 7540C or white to create L shape
- Face(s) to be .090 Aluminum, Painted White
- Faces to be stencil cut to accept push thru graphics
- Graphics to be 3/4" clear acrylic push thru graphics with Opaque vinyl applied first surface
- Translucent white vinyl applied second surface for edge lit look
- White GE Select Line - Medium on either side; LED's to be mounted to 3mm ACM prefinished white aluminum baffles
- (Qty 2) 2" x 2" x 1/4" x 24" square aluminum poles running through cabinet and protruding 7" from cabinet; poles painted PMS 7540C
- Poles to be welded to (Qty: 2) 10" x 6" x 1/2" aluminum mounting plates; plates painted PMS 7540C
- Blade sign mounted to fascia via plates with (Qty: 8) 1/2" Sleeve Anchor ( 3/8" Dia Bolt ) - 2" Min Embedment - Silicone used at all penetrations-

- Provided By Others - All below to be provided by others
- 120V Primary electrical brought to sign location
  - Primary electrical connection by other

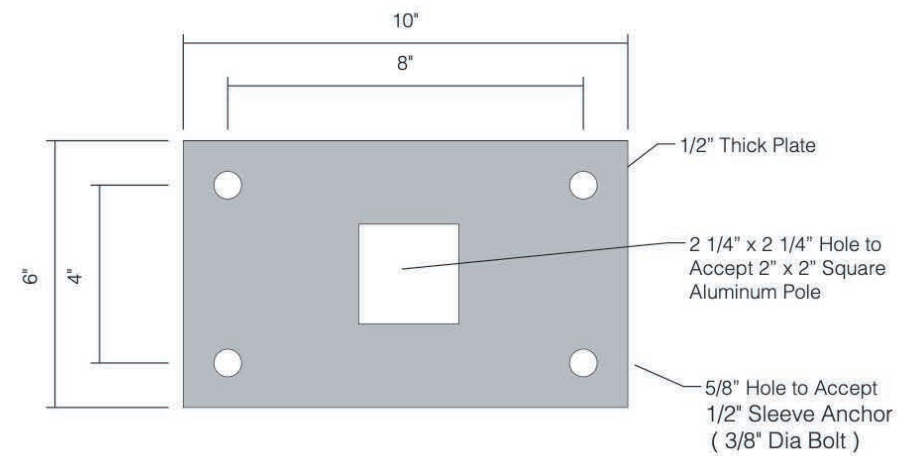
**Colors & Materials**

**Vinyl**

- DD Orange Opaque 3M 7725-14
- DD Magenta Opaque Arlon 2100-58
- White Translucent

**Paint**

- To Match PMS 7540C; Gloss Finish
- White; Gloss Finish



**D** Plate Detail - Plan View  
 Scale: 1"=1'-0"

125 Samuel Barnet Boulevard  
 New Bedford, MA 02745  
 800.544.0961 | poyantsigns.com

Innovation District Garage

75 Clifford St.  
 Providence, RI, 02903

Project: 23800  
 Innovation District Garage

Sales: JF  
 Date: 08.08.24  
 Designer: SP

Note:  
 This is an original unpublished drawing created by Poyant Signs, Inc. It is submitted for your personal use in connection with a project being planned for you by Poyant Signs, Inc. It is not to be shown to anyone outside your organization, nor is it to be reproduced, copied or exhibited in any fashion until transferred.

Revisions:

This sign is intended to be installed in accordance with the requirements of Article 600 of the National Electrical Code and / or other applicable local codes. This includes proper grounding and bonding of the sign.

Approved By:

Date:

Existing Tenant Sign  
 (Qty: 1)  
 21.93 Sq Ft total



**A** Sign Elevation - Front View  
 Scale: 3/4"=1'-0"

**Specifications**

Qty = 1 21.93 Sq Ft

**Vinyl Graphics**

\*Clean Glass Prior to Install

\*Note: Must be Minimum 50° to Apply Graphics in Field

- Graphics to be opaque vinyl applied first surface to glass window

**Colors & Materials**

**Vinyl**

- DD Orange Opaque 3M 7725-14
- DD Magenta Opaque Arlon 2100-58
- White Opaque

**Innovation District Garage**

75 Clifford St.  
 Providence, RI, 02903

Project: 23800  
 Innovation District Garage

Sales: JF  
 Date: 08.08.24  
 Designer: SP

**Note:**  
 This is an original unpublished drawing created by Poyant Signs, Inc. It is submitted for your personal use in connection with a project being planned for you by Poyant Signs, Inc. It is not to be shown to anyone outside your organization, nor is it to be reproduced, copied or exhibited in any fashion until transferred.

**Revisions:**


**UL**  
 This sign is intended to be installed in accordance with the requirements of Article 600 of the National Electrical Code and / or other applicable local codes. This includes proper grounding and bonding of the sign.

Approved By: \_\_\_\_\_

Date: \_\_\_\_\_



**E** Photo Comp - Existing  
 Not to Scale



**F** Photo Comp - Proposed (Day)  
 Not to Scale